



I WISH

BIG FAMILY MEALS

by  
TEKA OVENS

OVENS

WISHES COME TRUE

At Teka, we believe that without convenience and ease of use,  
there can be no innovation.  
That is why our WISH ovens are truly innovative



RANGE OVERVIEW



Maestro



Total



Easy



# WISH

*Make a wish*

**WISH**, THE SPECTACULAR NEW OVEN RANGE CREATED BY TEKA. HIGHLY ACCURATE, LOW CONSUMPTION APPLIANCES WHICH ARE VERY EASY TO USE AND CLEAN AND WILL MAKE ALL YOUR COOKING DREAMS COME TRUE - IN A REAL KITCHEN!



## REAL SAVINGS

**WISH** ovens reduce energy consumption by up to 20% compared to previous models. Highly efficient, they have a lot to offer and reduce the carbon footprint.



## REAL CLEAN WITH DUALCLEAN

### DOUBLE AUTO-CLEANING SYSTEM IN ONE OVEN.

Pyrolysis and Hydroclean are used in the same oven. Heat or water. The new Pyrolytic Ovens from Teka incorporate a DualClean system which offers you two different auto-cleaning systems so that you can choose which one is most convenient at any moment.

**WISH**  
ovens have been tested  
in the world's  
most demanding laboratory:  
your kitchen.



## REAL SPACE

With more space inside: Up to 76 litres useful capacity, 30% more than previous models. Trays with 7.5% greater surface area. Now with anti-tip system.



## REAL PRECISION

**WISH** ovens increase your haptic sensation with new control knobs. Their wider diameter makes for an easy grip and increases precision in every movement.

## REAL PRACTICALITY

The new ovens from Teka are innovative:



### NEW DESIGN OF THE BACK WALL AND GRILL

The new design of the backwall provides better heat distribution and easier cleaning. The new grill covers a greater surface area and its design grills foods more evenly. From 30°C to 270°C.



### NEW TELESCOPIC GUIDES

More robust and smoother-running. They allow for smoother removal of the trays with complete precision. The Clip-on system of the guides makes them also easier to install.



### MORE ACCESSORIES. GREATER POSSIBILITIES.

The **MultiCook tray** allows you to cook more dishes at the same time, even steam cooking in the trays or grill; and the **optional die-cast aluminium tray** with its anti-stick coating can be used both in the oven and on induction or glass-ceramic hobs.



## ANYTHING YOU COULD WISH FOR

A NEW RANGE OF **WISH** OVENS WHERE YOU CAN CHOOSE:

- ▶ A+ ovens with Pyrolytic and HydroClean® cleaning systems
- ▶ With a TFT screen or LCD display
- ▶ Ergonomic control knobs
- ▶ Up to 50 pre-programmed recipes.
- ▶ Meat probe and SlowCook function
- ▶ 2, 3 or 4 full removable glazed door
- ▶ "Plus" telescopic guides.
- ▶ Tangential ventilation Plus with 2 speeds
- ▶ Automatic express quick heating
- ▶ Drop down grill
- ▶ MultiCook or cast aluminium trays with anti-stick coating
- ▶ And black, white or stainless steel ovens

**Whatever you may  
WISH for !**





# \_ M A E S T R O R A N G E

*For those who go one step further*

FOR THOSE WHO ARE NOT SATISFIED WITH JUST BEING LIKE EVERYONE ELSE AND WHO, IN ADDITION TO USER-FRIENDLINESS AND PRECISION, SEEK A REFLECTION OF THEIR PERSONALITY.



## THE RECIPES YOU WISH FOR

As if there were always a chef at home! That's how new WISH ovens make you feel. Up to 50 pre-programmed recipes. Prepare the ingredients and the oven will adjust the temperature and function automatically.



## SLOW COOKING

Cook like a professional! The **SlowCook** function is the most efficient technique for enhancing your recipes' flavours and textures. A function that will never cease to surprise you.



## COOKED TO PERFECTION

By using the meat probe, you can choose the finish that you really like in your meat roasts. In this way, you guarantee the desired results, without having to make incisions or go for broke at the end.

# WISH

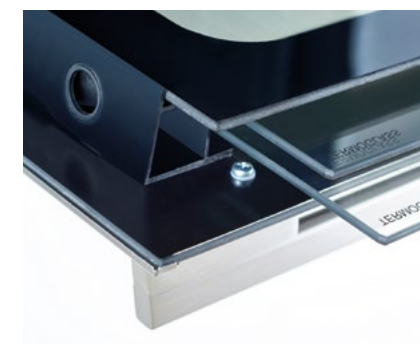
## OVENS WITH FULL-COLOR 4" AND 5" TFT DISPLAYS

New WISH ovens range are everything you have ever dreamt of. They will guide you step by step, delivering ultimate control and precision thanks to their full-colour 4" and 5" TFT displays.



## SMOOTHNESS, ABOVE ALL

With the **SoftClose** system, avoid unpleasant slamming thanks to the oven's smooth opening and closing. **SoftClose** also ensures safety and comfort.



## ULTIMATE SAFETY AND CLEANLINESS

The **Cool Touch System**®, with up to 4 glass panels, prevents burns. Furthermore, the glass panels and the doors can be taken apart, making cleaning them properly easy.



## FULL VISIBILITY

The **iOVEN's** side LED light gives you an unbeatable view of your food. And if you want to taste it, take out the tray safely and smoothly thanks to the **"Plus"** telescopic guides.



## MINIMUM ENERGY CONSUMPTION GUARANTEED

Reduce preheating time with no additional energy consumption. Save more with models that shut off automatically when you open the door.



# \_TOTAL RANGE

*For those who ask their oven for everything for everyone*

FOR THOSE WHO ARE PROUD OF THEIR HOMES AND SEEK DESIGN, FUNCTIONALITY, RELIABILITY AND, ABOVE ALL, A BALANCE BETWEEN PERFORMANCE AND CONSUMPTION.



## A NEW STYLE

The new range of Total ovens delivers ultimate precision. They are easy to operate thanks to their Touch Control panel with a white LED display.

Models come in stainless steel, black and white, with a new, sleek, straight, aluminium handle that is soft to the touch and makes the door easier to open.

Their full glazed door with a fine stainless steel edge is not only elegant but also makes it easier for you to see what you are cooking.



## TWO CLEANING SYSTEMS

Thanks to Teka's DualClean system, you have 2 self-cleaning methods in the same oven: water or heat in the same control knob.



## SAVINGS GUARANTEED

The Total oven range enjoys the savings delivered by an A+ energy rating: up to 20% less electricity consumption compared to an A rating.

Savings you feel in your pocket.



## SMOOTH TRAY REMOVAL GUIDES

Keep an eye on your recipe's cooking progress without risking dropping your tray thanks to the easily removable telescopic guides. The trays are also fitted with an anti-tip system.



## IN LINE WITH NEW LIFESTYLES

Quick and consistent thawing of all kinds of frozen foods, ranging from meat to, for example, bread or ready-prepared recipes, cakes or frozen foods.



## ENERGY EFFICIENT

Ideal for preparing all kinds of foods with the lowest energy consumption. Their smart temperature control system adapts consumptions to ensure the best results.



## SAFETY ABOVE ALL ELSE

The forced ventilating system reduces steam temperature before it is expelled outside. It improves oven cooling reducing the temperature of surrounding furniture.



## COOK PIZZA, PASTRY, CAKES... AS NEVER BEFORE!

Thanks to the combination of bottom heat and the turbo (circular heating element) that improves heat distribution.



## UNTOUCHED BY LITTLE CHILDREN'S MISCHIEF

The safety lock prevents programmes from being changed, especially by children.



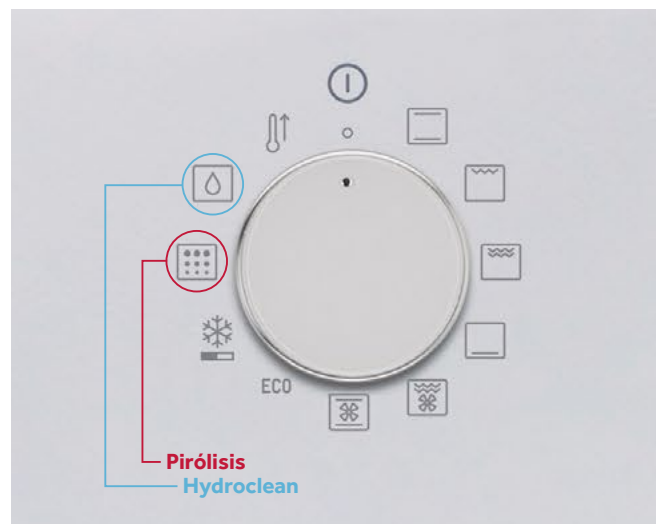
# TEKA DUALCLEAN

*Pyrolysis and HydroClean® in the same oven*

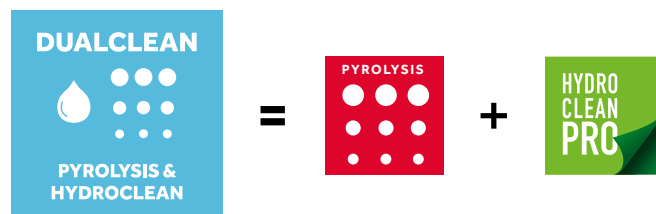
NEW **WISH** OVENS FEATURE TWO CLEANING SYSTEMS AT THE SAME TIME. **HYDROCLEAN®** FOR DAILY CLEANING OR **PYROLYSIS** FOR DEEP CLEANING.



Because they are the only ones fitted with the **DualClean** System that enables you to use, in the same oven, the most suitable option at any given time: **Pyrolysis** or **HydroClean®**. Heat to take advantage of the cleaning power of high temperatures (pyrolysis) or water to help clean your oven with the strength of steam.



The **DualClean** System enables you to activate the **self-cleaning** method that you want just by turning the control knob in ovens fitted with this function. If you have two options available, why make do with only one?



## PYROLYSIS:

YOUR OVEN AS GOOD AS NEW  
FOR LESS THAN 50 CENTS

Pyrolysis is a heat-based, self-cleaning system that makes food and grease residue that sticks to the oven disappear or turn into small particles that are easy to wipe away with a cloth at the end of the cycle.

The oven's exclusive interior design serves to ensure maximum heat use; that is why our programmes are shorter and the most efficient.

New **WISH** ovens feature 3 cleaning functions according to dirtiness level: 60, 90 and 120 minutes. Contrary to many myths, pyrolysis is really inexpensive, as the savings from not using chemical products are coupled with their low cleaning energy costs: less than 50 cents. Moreover, its use is recommended after using the oven every 4 or 5 times.



## SAFETY

At Teka, safety in your kitchen is not an option. That is why the oven door features a locking system throughout the entire pyrolytic cleaning process and even during cooking, 3 or 4 insulating glass panels in the door and a 2-speed, tangential Plus fan to cool down the door without wasting energy and to ensure that everything is just right!

## HYDROCLEAN®

TEKA OFFERS YOU  
2 WATER SELF-CLEANING OPTIONS:



### HYDROCLEAN® PRO

Activate the HydroClean® PRO function at the press of a button. As easy as pie!



### HYDROCLEAN® ECO

The manual and most ecological option. Add water, set the bottom heat function at 90°C for 4 minutes, wait 20 minutes and ready to go!



The combined action of the steam generated in the oven cavity and HydroClean® technology removes grease and grime with just a glass of water and a few drops of detergent poured onto a wipe. Ready in just 24 effort-free minutes!



## NEW SLIPPERY ENAMEL

Cleaning new **WISH** ovens is more efficient thanks to the Slippery enamel that coats their entire interior. This latest-generation enamel keeps the inside of your oven clean for longer as it resists sticking and increases slipperiness. Its resistance to acids and chemical agents also lengthens its useful life and improves protection against occasional knocks that occur during cooking. With Teka's exclusive enamel, the water (HydroClean®) and heat (Pyrolysis) self-cleaning functions improve results by keeping your oven interior in perfect condition.



*Minimum consumption, highly accurate and very easy to use*

# EASY

For those who prefer no complications in the kitchen without denying themselves an appliance that gives so much while asking for so little in return.

## — EASY

MECHANICAL



FGI

1

OVENS





WISH HLB 860 P

\_MAESTRO

HYDRO CLEAN PRO

A+ ECO

70L

TFT 4"

SOFTCLOSE

PLUS

FAST HEATING

ECO

4

4

ECO

Pyrolytic Multifunction Turbo

- 3 pyrolytic cleaning cycles
- HydroClean® PRO cleaning system
- Slippery enamel
- A+ Energy class: up to 20% less consumption
- Capacity, gross/net: 71/70 litres
- TFT 4" true color with Touch control
- LED illuminated ring knob
- Personal cook assistant: 20 programmed recipes
- Automatic Express preheating
- SlowCook: low temperature cooking
- Pizza, ferment, defrosting & ECO functions
- Children safety block, timer and door
- Automatic disconnection security system
- 4 removable glazed door
- SoftClose door
- Full glass inner door
- 1+1 Plus telescopic guides easy slide
- Anti-tip deep tray and reinforced grid
- Tangential ventilation Plus with 2 speeds
- Optional Muticook and cast aluminium tray

COLOR

Fingerprint proof stainless steel / Black

EXTERNAL DIMENSIONS

595 mm

595 mm

559 mm

WISH HLB 840 P

\_MAESTRO

HYDRO CLEAN PRO

A+ ECO

70L

SOFTCLOSE

4

ECO

4

4

ECO

Pyrolytic Multifunction Turbo

- 3 pyrolytic cleaning cycles
- HydroClean® PRO cleaning system
- Slippery enamel
- A+ Energy class: up to 20% less consumption
- Capacity, gross/net: 71/70 litres
- Touch Control panel with LED display
- Express preheating
- ECO & defrosting functions
- Children safety block, timer and door
- Automatic disconnection security system
- 4 removable glazed door
- SoftClose door
- Full glass inner door
- 1 telescopic guide easy slide
- Anti-tip deep tray and reinforced grid
- Tangential ventilation Plus with 2 speeds
- Optional Muticook and cast aluminium tray

COLOR

Fingerprint proof stainless steel / Black

EXTERNAL DIMENSIONS

595 mm

595 mm

559 mm

WISH HLB 840 P WHITE

\_MAESTRO

HYDRO CLEAN PRO

A+ ECO

70L

SOFTCLOSE

4

ECO

4

4

ECO

Pyrolytic Multifunction Turbo

- 3 pyrolytic cleaning cycles
- HydroClean® PRO cleaning system
- Slippery enamel
- A+ Energy class: up to 20% less consumption
- Capacity, gross/net: 71/70 litres
- Touch Control panel with LED display
- Express preheating
- ECO & defrosting functions
- Children safety block, timer and door
- Automatic disconnection security system
- 4 removable glazed door
- SoftClose door
- Full glass inner door
- 1 telescopic guide easy slide
- Anti-tip deep tray and reinforced grid
- Tangential ventilation Plus with 2 speeds
- Optional Muticook and cast aluminium tray

COLOR

White

EXTERNAL DIMENSIONS

595 mm

595 mm

559 mm

WISH HSB 635 P

\_TOTAL

HYDRO CLEAN PRO

A+ ECO

70L

4

ECO

4

4

ECO

Pyrolytic Multifunction

- 3 pyrolytic cleaning cycles
- HydroClean® PRO cleaning system
- Slippery enamel
- A+ Energy class: up to 20% less consumption
- Capacity, gross/net: 71/70 litres
- Touch Control panel with LED display
- Express preheating
- ECO & defrosting functions
- Children safety block, timer and door
- Automatic disconnection security system
- 4 removable glazed door
- Full glass inner door
- 1 telescopic guide
- Anti-tip deep tray and cooking grid
- Tangential ventilation Plus with 2 speeds
- Optional Muticook and cast aluminium tray

COLOR

Fingerprint proof stainless steel

EXTERNAL DIMENSIONS

595 mm

595 mm

559 mm

WISH HSB 630 P WHITE

\_TOTAL

HYDRO CLEAN PRO

A+ ECO

70L

4

ECO

4

4

ECO

Pyrolytic Multifunction

- 3 pyrolytic cleaning cycles
- HydroClean® PRO cleaning system
- Slippery enamel
- A+ Energy class: up to 20% less consumption
- Capacity, gross/net: 71/70 litres
- Touch Control panel with LED display
- Express preheating
- ECO & defrosting functions
- Children safety block, timer and door
- Automatic disconnection security system
- 4 removable glazed door
- Full glass inner door
- 1 telescopic guide
- Anti-tip deep tray and cooking grid
- Tangential ventilation Plus with 2 speeds
- Optional Muticook and cast aluminium tray

COLOR

White

EXTERNAL DIMENSIONS

595 mm

595 mm

559 mm

WISH HSB 630 P BLACK

\_TOTAL

HYDRO CLEAN PRO

A+ ECO

70L

4

ECO

4

4

ECO

Pyrolytic Multifunction

- 3 pyrolytic cleaning cycles
- HydroClean® PRO cleaning system
- Slippery enamel
- A+ Energy class: up to 20% less consumption
- Capacity, gross/net: 71/70 litres
- Touch Control panel with LED display
- Express preheating
- ECO & defrosting functions
- Children safety block, timer and door
- Automatic disconnection security system
- 4 removable glazed door
- Full glass inner door
- 1 telescopic guide
- Anti-tip deep tray and cooking grid
- Tangential ventilation Plus with 2 speeds
- Optional Muticook and cast aluminium tray

COLOR

Black

EXTERNAL DIMENSIONS

595 mm

595 mm

559 mm





PYROLYTIC



NEW

WISH HSB 625 P

— \_TOTAL



Pyrolytic Multifunction

- 3 pyrolytic cleaning cycles
- HydroClean® PRO cleaning system
- Slippery enamel
- A+ Energy class: up to 20% less consumption
- Capacity, gross/net: 71/70 litres
- Touch Control panel with LED display
- Express preheating
- ECO & defrosting functions
- Children safety block, timer and door
- Automatic disconnection security system
- Triple removable glazed door
- Full glass inner door
- Anti-tip deep tray and cooking grid
- Tangential ventilation Plus with 2 speeds
- Optional Muticook tray

COLOR  
Fingerprint proof stainless steel

EXTERNAL DIMENSIONS  
⬆ 595 mm ➡ 595 mm ↻ 559 mm



NEW

WISH HSB 620 P WHITE

— \_TOTAL



Pyrolytic Multifunction

- 3 pyrolytic cleaning cycles
- HydroClean® PRO cleaning system
- Slippery enamel
- A+ Energy class: up to 20% less consumption
- Capacity, gross/net: 71/70 litres
- Touch Control panel with LED display
- Express preheating
- ECO & defrosting functions
- Children safety block, timer and door
- Automatic disconnection security system
- Triple removable glazed door
- Full glass inner door
- Anti-tip deep tray and cooking grid
- Tangential ventilation Plus with 2 speeds
- Optional Muticook tray

COLOR  
White

EXTERNAL DIMENSIONS  
⬆ 595 mm ➡ 595 mm ↻ 559 mm



NEW

WISH HSB 620 P BLACK

— \_TOTAL



Pyrolytic Multifunction

- 3 pyrolytic cleaning cycles
- HydroClean® PRO cleaning system
- Slippery enamel
- A+ Energy class: up to 20% less consumption
- Capacity, gross/net: 71/70 litres
- Touch Control panel with LED display
- Express preheating
- ECO & defrosting functions
- Children safety block, timer and door
- Automatic disconnection security system
- Triple removable glazed door
- Full glass inner door
- Anti-tip deep tray and cooking grid
- Tangential ventilation Plus with 2 speeds
- Optional Muticook tray

COLOR  
Black

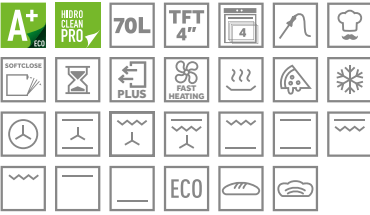
EXTERNAL DIMENSIONS  
⬆ 595 mm ➡ 595 mm ↻ 559 mm



NEW

WISH IOVEN INOX

— \_MAESTRO



Multifunction Turbo

- Hydroclean® PRO cleaning system
- Slippery enamel
- A+ Energy class: up to 20% less consumption
- Capacity, gross/net: 71/70 litres
- TFT 5" true color Touch control
- Personal Cook assistant: 50 programmed recipes
- Meat probe
- Automatic Express preheating
- SlowCook function: low temperature cooking
- Keep warm, bake bread, quick heating, pizza, ferment, defrosting & ECO functions
- Children safety block
- Automatic disconnection security system
- Triple removable glazed door
- SoftClose door
- Full glass inner door
- 2 Plus telescopic guides easy slide
- Drop down maxi grill
- Muticook tray
- Anti-tip deep & baking tray and 2 reinforced grids
- 2 lateral Led
- Tangential ventilation
- Optional cast aluminium tray

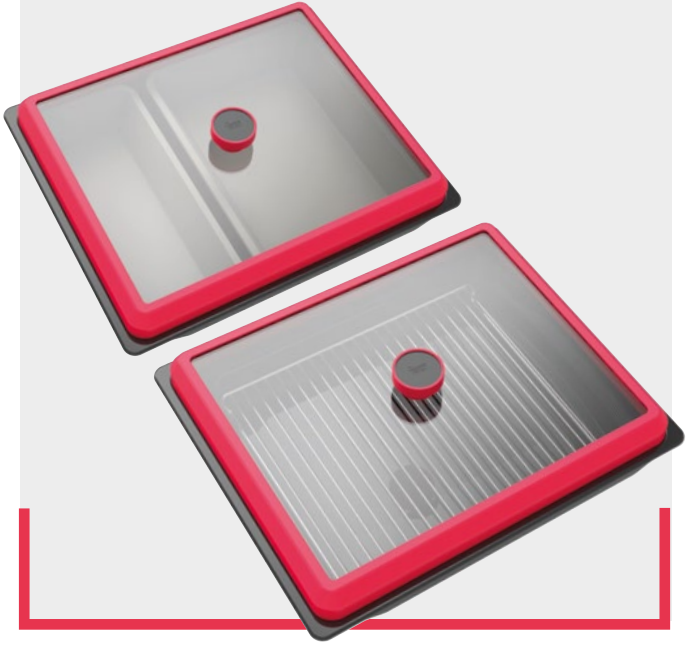


COLOR  
Fingerprint proof stainless steel / Black

EXTERNAL DIMENSIONS  
⬆ 595 mm ➡ 595 mm ↻ 559 mm

MULTICOOK TRAY

Ideal to cook several foods at the same time. It allows steam cooking in the trays or grill.







### WISH HLB 860

— \_MAESTRO



#### Multifunction Turbo

- HydroClean® PRO cleaning system
- Slippery enamel
- A+ Energy class: up to 20% less consumption
- Capacity, gross/net: 71/70 litres
- Touch Control panel with TFT 4"
- LED illuminated knob
- Personal Cook assistant: 20 programmed recipes
- Automatic Express preheating
- SlowCook function: low temperature cooking
- Pizza, ferment, defrosting & ECO functions
- Children safety block
- Automatic disconnection security system
- Triple removable glazed door
- SoftClose door
- Full glass inner door
- 1 telescopic guide easy slide
- Drop down maxi grill
- Anti-tip deep tray and reinforced grid
- Tangential ventilation
- Optional Muticook and cast aluminium tray



#### COLOR

Fingerprint proof stainless steel / Black

#### EXTERNAL DIMENSIONS

⬆ 595 mm ➡ 595 mm ↻ 559 mm



### WISH HLB 850

— \_MAESTRO



#### Multifunction Turbo

- HydroClean® PRO cleaning system
- Slippery enamel
- A+ Energy class: up to 20% less consumption
- Capacity, gross/net: 71/70 litres
- Touch Control panel with LED display
- Express preheating
- ECO & defrosting functions
- Children safety block
- Triple removable glazed door
- SoftClose door
- Full glass inner door
- 1 telescopic guide easy slide
- Drop down maxi grill
- Anti-tip deep tray and reinforced grid and baking tray
- Dynamic ventilation
- Optional Muticook and cast aluminium tray



#### COLOR

Fingerprint proof stainless steel / Black

#### EXTERNAL DIMENSIONS

⬆ 595 mm ➡ 595 mm ↻ 559 mm



### WISH HLB 840

— \_MAESTRO



#### Multifunction Turbo

- HydroClean® PRO cleaning system
- Slippery enamel
- A+ Energy class: up to 20% less consumption
- Capacity, gross/net: 71/70 litres
- Touch Control panel with LED display
- Express preheating
- ECO & defrosting functions
- Children safety block
- Double removable glazed door
- Full glass inner door
- 1 telescopic guide easy slide
- Drop down maxi grill
- Anti-tip deep tray and reinforced grid
- Dynamic ventilation
- Optional Muticook and cast aluminium tray



#### COLOR

Fingerprint proof stainless steel / Black

#### EXTERNAL DIMENSIONS

⬆ 595 mm ➡ 595 mm ↻ 559 mm



### WISH HLB 840 WHITE

— \_MAESTRO



#### Multifunction Turbo

- HydroClean® PRO cleaning system
- Slippery enamel
- A+ Energy class: up to 20% less consumption
- Capacity, gross/net: 71/70 litres
- Touch Control panel with LED display
- Express preheating
- ECO & defrosting functions
- Children safety block
- Double removable glazed door
- Full glass inner door
- 1 telescopic guide easy slide
- Drop down maxi grill
- Anti-tip deep tray and reinforced grid
- Dynamic ventilation
- Optional Muticook and cast aluminium tray



#### COLOR

White

#### EXTERNAL DIMENSIONS

⬆ 595 mm ➡ 595 mm ↻ 559 mm



### WISH HLB 830

— \_MAESTRO



#### Multifunction

- HydroClean® PRO cleaning system
- Slippery enamel
- A+ Energy class: up to 20% less consumption
- Capacity, gross/net: 71/70 litres
- Touch Control panel with LED display
- Express preheating
- ECO & defrosting functions
- Children safety block
- Double removable glazed door
- Full glass inner door
- 1 telescopic guide easy slide
- Anti-tip deep tray and cooking grid
- Dynamic ventilation
- Optional Muticook and cast aluminium tray



#### COLOR

Fingerprint proof stainless steel / Black

#### EXTERNAL DIMENSIONS

⬆ 595 mm ➡ 595 mm ↻ 559 mm





WISH HSB 645

— \_TOTAL



Multifunction Turbo

- HydroClean® PRO cleaning system
- Slippery enamel
- A+ Energy class: up to 20% less consumption
- Capacity, gross/net: 71/70 litres
- Touch Control panel with LED display
- Express preheating
- ECO and defrosting functions
- Children safety block
- Double removable glazed door
- Full glass inner door
- 1 telescopic guide easy slide
- Anti-tip deep & baking trays and cooking grid
- Dynamic ventilation
- Optional Muticook and cast aluminium tray



WISH HSB 640 WHITE

— \_TOTAL



Multifunction Turbo

- HydroClean® PRO cleaning system
- Slippery enamel
- A+ Energy class: up to 20% less consumption
- Capacity, gross/net: 71/70 litres
- Touch Control panel with LED display
- Express preheating
- ECO and defrosting functions
- Children safety block
- Double removable glazed door
- Full glass inner door
- 1 telescopic guide easy slide
- Anti-tip deep & baking trays and cooking grid
- Dynamic ventilation
- Optional Muticook and cast aluminium tray



WISH HSB 640 BLACK

— \_TOTAL



Multifunction Turbo

- HydroClean® PRO cleaning system
- Slippery enamel
- A+ Energy class: up to 20% less consumption
- Capacity, gross/net: 71/70 litres
- Touch Control panel with LED display
- Express preheating
- ECO and defrosting functions
- Children safety block
- Double removable glazed door
- Full glass inner door
- 1 telescopic guide easy slide
- Anti-tip deep & baking trays and cooking grid
- Dynamic ventilation
- Optional Muticook and cast aluminium tray



WISH HSB 635

— \_TOTAL



Multifunction

- HydroClean® PRO cleaning system
- Slippery enamel
- A+ Energy class: up to 20% less consumption
- Capacity, gross/net: 71/70 litres
- Touch Control panel with LED display
- Express preheating
- ECO and defrosting functions
- Children safety block
- Double removable glazed door
- Full glass inner door
- 1 telescopic guide easy slide
- Anti-tip deep tray and cooking grid
- Dynamic ventilation
- Optional Muticook and cast aluminium tray



WISH HSB 630 WHITE

— \_TOTAL



Multifunction

- HydroClean® PRO cleaning system
- Slippery enamel
- A+ Energy class: up to 20% less consumption
- Capacity, gross/net: 71/70 litres
- Touch Control panel with LED display
- Express preheating
- ECO and defrosting functions
- Children safety block
- Double removable glazed door
- Full glass inner door
- 1 telescopic guide easy slide
- Anti-tip deep tray and cooking grid
- Dynamic ventilation
- Optional Muticook and cast aluminium tray



WISH HSB 630 BLACK

— \_TOTAL



Multifunction

- HydroClean® PRO cleaning system
- Slippery enamel
- A+ Energy class: up to 20% less consumption
- Capacity, gross/net: 71/70 litres
- Touch Control panel with LED display
- Express preheating
- ECO and defrosting functions
- Children safety block
- Double removable glazed door
- Full glass inner door
- 1 telescopic guide easy slide
- Anti-tip deep tray and cooking grid
- Dynamic ventilation
- Optional Muticook and cast aluminium tray



COLOR

Fingerprint proof stainless steel

EXTERNAL DIMENSIONS

⬆ 595 mm ➡ 595 mm ↗ 559 mm



COLOR

White

EXTERNAL DIMENSIONS

⬆ 595 mm ➡ 595 mm ↗ 559 mm



COLOR

Black

EXTERNAL DIMENSIONS

⬆ 595 mm ➡ 595 mm ↗ 559 mm



COLOR

Fingerprint proof stainless steel

EXTERNAL DIMENSIONS

⬆ 595 mm ➡ 595 mm ↗ 559 mm



COLOR

White

EXTERNAL DIMENSIONS

⬆ 595 mm ➡ 595 mm ↗ 559 mm



COLOR

Black

EXTERNAL DIMENSIONS

⬆ 595 mm ➡ 595 mm ↗ 559 mm





WISH HSB 615

— \_TOTAL



- Multifunction**
- HydroClean® ECO cleaning system
  - Slippery enamel
  - A Energy class
  - Capacity, gross/net: 71/70 litres
  - Minute Minder
  - Express preheating function
  - ECO and defrosting functions
  - Double removable glazed door
  - Full glass inner door
  - 1 telescopic guide easy slide
  - Anti-tip deep tray and cooking grid
  - Dynamic ventilation
  - Optional Muticook and cast aluminium tray

—

**COLOR**

Fingerprint proof stainless steel

**EXTERNAL DIMENSIONS**

⬆ 595 mm ➡ 595 mm ↻ 559 mm



WISH HSB 610 WHITE

— \_TOTAL



- Multifunction**
- HydroClean® ECO cleaning system
  - Slippery enamel
  - A Energy class
  - Capacity, gross/net: 71/70 litres
  - Minute Minder
  - Express preheating function
  - ECO and defrosting functions
  - Double removable glazed door
  - Full glass inner door
  - 1 telescopic guide easy slide
  - Anti-tip deep tray and cooking grid
  - Dynamic ventilation
  - Optional Muticook and cast aluminium tray

—

**COLOR**

White

**EXTERNAL DIMENSIONS**

⬆ 595 mm ➡ 595 mm ↻ 559 mm



WISH HSB 610 BLACK

— \_TOTAL



- Multifunction**
- HydroClean® ECO cleaning system
  - Slippery enamel
  - A Energy class
  - Capacity, gross/net: 71/70 litres
  - Minute Minder
  - Express preheating function
  - ECO and defrosting functions
  - Double removable glazed door
  - Full glass inner door
  - 1 telescopic guide easy slide
  - Anti-tip deep tray and cooking grid
  - Dynamic ventilation
  - Optional Muticook and cast aluminium tray

—

**COLOR**

Black

**EXTERNAL DIMENSIONS**

⬆ 595 mm ➡ 595 mm ↻ 559 mm



WISH HBB 605

— \_EASY



- Multifunction**
- HydroClean® ECO cleaning system
  - Slippery enamel
  - Energy class: A
  - Capacity, gross/net: 71/70 litres
  - Minute minder
  - Express preheating function
  - ECO and defrosting functions
  - Double removable glazed door
  - Full glass inner door
  - Anti-tip deep tray and cooking grid
  - Dynamic ventilation
  - Optional Muticook tray

—

**COLOR**

Fingerprint proof stainless steel

**EXTERNAL DIMENSIONS**

⬆ 595 mm ➡ 595 mm ↻ 559 mm



WISH HBB 535

— \_EASY



- Conventional**
- HydroClean® ECO cleaning system
  - Slippery enamel
  - Energy class: A
  - Capacity, gross/net: 77/76 litres
  - Minute minder
  - Double removable glazed door
  - Full glass inner door
  - Anti-tip deep tray and cooking grid
  - Dynamic ventilation
  - Optional Muticook tray

—

**COLOR**

Fingerprint proof stainless steel

**EXTERNAL DIMENSIONS**

⬆ 595 mm ➡ 595 mm ↻ 559 mm



WISH HBB 510 WHITE

— \_EASY



- Conventional**
- HydroClean® ECO cleaning system
  - Slippery enamel
  - Energy class: A
  - Capacity, gross/net: 77/76 litres
  - Minute minder
  - Double removable glazed door
  - Full glass inner door
  - Anti-tip deep tray and cooking grid
  - Dynamic ventilation
  - Optional Muticook tray

—

**COLOR**

White

**EXTERNAL DIMENSIONS**

⬆ 595 mm ➡ 595 mm ↻ 559 mm





## WISH HBB 510 BLACK

— \_EASY



### Conventional

- HydroClean® ECO cleaning system
- Slippery enamel
- Energy class: A
- Capacity, gross/net: 77/76 litres
- Minute minder
- Double removable glazed door
- Full glass inner door
- Anti-tip deep tray and cooking grid
- Dynamic ventilation
- Optional Muticook tray

COLOR  
Black

### EXTERNAL DIMENSIONS

⬆ 595 mm ➡ 595 mm ↗ 559 mm

## WISH HBB 490 WHITE

— \_EASY



### Conventional

- Slippery enamel
- Energy class: A
- Capacity, gross/net: 75/72 litres
- Double removable glazed door
- Full glass inner door
- Anti-tip deep tray and cooking grid
- Dynamic ventilation
- Optional Muticook tray

COLOR  
White

### EXTERNAL DIMENSIONS

⬆ 595 mm ➡ 595 mm ↗ 559 mm

## WISH HBB 435

— \_EASY



### Conventional

- Slippery enamel
- Energy class: A
- Capacity, gross/net: 75/72 litres
- Double removable glazed door
- Full glass inner door
- Anti-tip deep tray and cooking grid
- Dynamic ventilation
- Optional Muticook tray

COLOR  
Fingerprint proof stainless steel

### EXTERNAL DIMENSIONS

⬆ 595 mm ➡ 595 mm ↗ 559 mm



## HL 45.15



### Multifunction Turbo

- Energy class: A (upper cavity)
- Touch control digital display
- Pop-up control knobs
- Children safety block
- Deep & baking tray and reinforced grid
- Tangential ventilation

### UPPER CAVITY

- Capacity, gross/net: 48/38 litres
- 5 cooking functions
- Grill

### LOWER CAVITY

- Capacity, gross/net: 31/18 litres
- 4 cooking functions
- 2 grills ( upper/lower )

## TWO CAVITIES, IDEAL FOR PIZZA

With the Combo HL 45.15 oven you can cook different meals at the same time, thanks to the two cavities of 45 cm and 15 cm height.

This way, in a conventional niche space, you can prepare a roast for your guests and a pizza for the kids at the same time.



COLOR  
Fingerprint proof stainless steel

### EXTERNAL DIMENSIONS

⬆ 595 mm ➡ 595 mm ↗ 562 mm





HL 940

MAESTRO



Multifunction Turbo

HydroClean® PRO cleaning system

Energy class: A

Capacity, gross/net: 91/77 litres

Touch Control panel

Pop-up control knobs

Children safety block

Triple glazed door

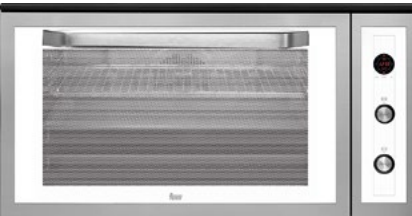
Full glass inner door

2 telescopic guides ( 1 Plus extraction )

Drop down maxi grill

Deep & baking tray and reinforced grid

Tangential ventilation



HL 940 WHITE

MAESTRO



Multifunction Turbo

HydroClean® PRO cleaning system

Energy class: A

Capacity, gross/net: 91/77 litres

Touch Control panel

Pop-up control knobs

Children safety block

Triple glazed door

Full glass inner door

2 telescopic guides ( 1 Plus extraction )

Drop down maxi grill

Deep & baking tray and reinforced grid

Tangential ventilation



HS 900

TOTAL



Multifunction

HydroClean® ECO cleaning system

Energy class: A

Capacity, gross/net: 91/77 litres

Mechanical control knobs

Full glass inner door

Drop down maxi grill

Deep tray and cooking grid

Tangential ventilation



HDL 888

MAESTRO



Multifunction Turbo double oven

Energy class: B/A

Touch Control panel

Pop-up control knobs

Children safety block

Double glazed door

Full glass inner door

2 deep trays, 2 reinforced + 1 cooking grids

and 1 tray handle

Tangential ventilation

UPPER CAVITY

Capacity : 31/36 litres ( net/gross )

4 cooking functions

Maxi grill

LOWER CAVITY

Capacity : 57/65 litres ( net/gross )

4 cooking functions

Maxi gril



HDL 718

MAESTRO



Multifunction Turbo double oven

Energy class: B/A

Touch Control panel

Pop-up control knobs

Children safety block

Double glazed door

Full glass inner door

1 deep tray, 1 reinforced + 2 cooking grids and

1 tray handle

Tangential ventilation

UPPER CAVITY

Capacity : 31/36 litres ( net/gross )

4 cooking functions

Maxi grill

LOWER CAVITY

Capacity : 38/48 litres ( net/gross )

1 cooking functions



HR 750

TOTAL



Multifunction Turbo

Energy class: A

Capacity, gross/net: 65/57 litres

Analogic timer with stop programmer

Automatic disconnection security system

Double glazed door

Full glass inner door

2 telescopic guides easy slide

Drop down maxi grill

Deep & baking tray and cooking grid

Dynamic ventilation



HR 650

— \_TOTAL



Multifunction Turbo

- Energy class: A
- Capacity, gross/net: 65/57 litres
- Analogic timer with stop programmer
- Double glazed door
- Full glass inner door
- 2 telescopic guides
- Deep tray and cooking grid
- Dynamic ventilation

COLOR  
Anthracite B - brass

EXTERNAL DIMENSIONS  
⬆ 595 mm ➡ 595 mm ↗ 562 mm



HR 550

— \_TOTAL



Multifunction

- Energy class: A
- Capacity, gross/net: 65/57 litres
- Analogic timer with stop programmer
- Double glazed door
- Full glass inner door
- 1 Telescopic guide
- Deep tray and cooking grid
- Dynamic ventilation

COLOR  
Anthracite/Beige / Bright Cream B - brass

EXTERNAL DIMENSIONS  
⬆ 595 mm ➡ 595 mm ↗ 562 mm



HGR 650

— \_TOTAL



Gas oven with gas grill

- Energy class: B
- Capacity, gross/net: 56,3/45,6 litres
- Analogic timer with stop programmer
- Safety device
- Double glazed door
- Full glass inner door
- Side catalytic panels.
- Chromed guides, 5 cooking levels
- Deep tray and cooking grid
- Tangential ventilation
- Nozzels to LPG gas

COLOR  
Anthracite B / Bright Cream B - brass

EXTERNAL DIMENSIONS  
⬆ 595 mm ➡ 595 mm ↗ 562 mm



HGL 924

— \_TOTAL



Multifunction gas oven with electric grill

- Energy class: B
- Capacity, gross/net: 69/88 litres
- Mechanical control knobs with stop programmer
- Adjustable thermostat
- Automatic gas oven ignition
- Safety device
- Triple glazed door
- Full glass inner door
- Chromed guides, 5 cooking levels
- Deep tray and cooking grid
- Tangential ventilation

COLOR  
Fingerprint proof stainless steel

EXTERNAL DIMENSIONS  
⬆ 595 mm ➡ 898 mm ↗ 549 mm



HGL 824

— \_TOTAL



Multifunction gas oven with electric grill

- Energy class: B
- Capacity, gross/net: 69/88 litres
- Mechanical control knobs with stop programmer
- Adjustable thermostat
- Automatic gas oven ignition
- Safety device
- Triple glazed door
- Full glass inner door
- Chromed guides, 5 cooking levels
- Deep tray and cooking grid
- Tangential ventilation

COLOR  
Fingerprint proof stainless steel

EXTERNAL DIMENSIONS  
⬆ 595 mm ➡ 798 mm ↗ 549 mm



FGA 820

— \_TOTAL



Gas oven with electric grill

- Energy class: B
- Capacity, gross/net: 65/57 litres
- Mechanical control knobs with stop programmer
- Adjustable thermostat
- Safety device
- Double glazed door
- Turnspit
- Side catalytic panels
- Deep tray and cooking grid
- Tangential ventilation

COLOR  
Fingerprint proof stainless steel

EXTERNAL DIMENSIONS  
⬆ 595 mm ➡ 595 mm ↗ 562 mm





HGS 924

EASY



- Multifunction gas oven with electric grill
- Energy class: B
- Capacity Gross/Net: 88/69 litres
- Mechanical control knobs with stop programmer
- Adjustable thermostat
- Automatic gas oven ignition
- Safety device
- Double glazed door
- Full glass inner door
- Chromed guides, 5 cooking levels
- Deep tray and cooking grid
- Tangential ventilation

COLOR  
Fingerprint proof stainless steel

EXTERNAL DIMENSIONS  
595 mm 898 mm 549 mm



HGS 930

EASY



- Multifunction gas oven with gas grill
- Energy class: B
- Capacity Gross/Net: 88/64 litres
- Mechanical timer with stop programmer
- Adjustable thermostat
- Automatic gas oven ignition
- Safety device
- Double glazed door
- Full glass inner door
- Chromed guides, 5 cooking levels
- Deep tray and cooking grid
- Tangential ventilation

COLOR  
Fingerprint proof stainless steel

EXTERNAL DIMENSIONS  
595 mm 898 mm 549 mm



HGS 824

EASY



- Multifunction gas oven with electric grill
- Energy class: B
- Capacity Gross/Net: 88/69 litres
- Mechanical control knobs with stop programmer
- Adjustable thermostat
- Automatic gas oven ignition
- Safety device
- Double glazed door
- Full glass inner door
- Chromed guides, 5 cooking levels
- Deep tray and cooking grid
- Tangential ventilation

COLOR  
Fingerprint proof stainless steel

EXTERNAL DIMENSIONS  
595 mm 798 mm 549 mm



HGS 740

EASY



- Multifunction gas oven with gas grill
- Energy class: B
- Capacity Gross/Net: 56.3/45.6 litres
- Mechanical timer with stop programmer
- Children safety block
- Double glazed door
- Full glass inner door
- Side catalytic panels
- Deep tray and cooking grid
- Tangential ventilation
- Nozzels to LPG gas

COLOR  
Stainless steel

EXTERNAL DIMENSIONS  
595 mm 595 mm 562 mm



FGE 724

EASY



- Gas oven with electric grill
- Energy class: B
- Capacity Gross/Net: 65/57 litres
- Mechanical control knobs
- Adjustable thermostat
- Safety device
- Catalytic panels inner walls
- Deep tray and cooking grid
- Tangential ventilation

COLOR  
Fingerprint proof stainless steel

EXTERNAL DIMENSIONS  
596 mm 595 mm 562 mm



FGE 730

EASY



- Gas oven with gas grill
- Energy class: B
- Capacity Gross/Net: 65/57 litres
- Mechanical control knobs
- Adjustable thermostat
- Safety device
- Side catalytic panels
- Deep tray and cooking grid
- Tangential ventilation

COLOR  
Fingerprint proof stainless steel

EXTERNAL DIMENSIONS  
595 mm 595 mm 562 mm





TECHNICAL FEATURES

PRODUCT FICHE ACCORDING TO COMMISSION DELEGATED REGULATION (EU) NO 65/2014

Model	HLB 860 P	HLB 840 P	HSB 635 P	HSB 630 P	HSB 625 P HSB 620 P
Energy Efficiency Index (EEI)	80,8	81	81	81	81
Energy Efficiency Class	A+	A+	A+	A+	A+
Energy cosumption per cycle in conventional mode (kWh)	0,88	0,88	0,88	0,88	0,88
Energy consumption per cycle in fan-forced convection mode (kWh)	0,68	0,68	0,68	0,68	0,68
Number of cavities	1	1	1	1	1
Heat source	Electric	Electric	Electric	Electric	Electric
Volume (l)	70	70	70	70	70

DIMENSIONS

External, mm	595x595x 559	595x595x 559	595x595x 559	595x595x 559	595x595x 559
Inner cavit y, mm	367x475x405	367x475x405	367x475x405	367x475x405	367x475x405

CLEANING SYSTEMS

DualClean	•	•	•	•	•
Pyrolytic	•	•	•	•	•
HydroClean®	PRO	PRO	PRO	PRO	PRO
Enamel	Slippery	Slippery	Slippery	Slippery	Slippery

FEATURES

Type	Pyrolytic Multifunction	Pyrolytic Multifunction	Pyrolytic Multifunction	Pyrolytic Multifunction	Pyrolytic Multifunction
Stainless steel (fingerprint proof)	•	• / White	•	White / Black	• / White / Black
Cooking functions	12	8	8	8	8
Temperature regulator	30-270°	50-250°	50-250°	50-250°	50-250°
Touch Control	• / TFT 4"	• / TFT 4"	• / LED display	• / LED display	• / LED display
LED ring iluminated knobs	•	-	-	-	-
SoftClose	•	•	-	-	-
Recipes	20 recipes	-	-	-	-
Meat probe	-	-	-	-	-
SlowCook: low temperature cooking	•				
Tangential ventilation	Plus 2 speeds	Plus 2 speeds	Plus 2 speeds	Plus 2 speeds	Plus 2 speeds
Express quick heating	Automatic	•	•	•	•
Telescopic guides	1+1 Full easy slide	1 easy slide	1	1	-
Drop-down grill	-	-	-	-	-
Light	25W	25W	25W	25W	25W

SAFETY SYSTEMS

Full glazed door	4 removable	4 removable	4 removable	4 removable	3 removable
Automatic disconnection security system	•	•	•	•	•
Children safety	•	•	•	•	•
Grill protection	•	•	•	•	•
Anti-tip tray system	•	•	•	•	•

ACCESORIES

MultiCook /cast aluminium tray	optional	optional	optional	optional	optional
Anti-tip baking / deep tray (50 mm)	- / •	- / •	- / •	- / •	- / •
Anti-tip reinforced / cooking grid	• / -	• / -	- / •	- / •	- / •

POWER CONSUMPTION

Turbo, W	2.000	2.000	-	-	-
Grill / Maxi grill, W	1.050/2.450	1.050/2.450	1.050/2.450	1.050/2.450	1.050/2.450
Traditional, W	2.450	2.450	2.450	2.450	2.450
Multifunction motor, W	25	25	25	25	25
Bottom heat, W	1.050	1.050	1.050	1.050	1.050
Cooling fan motor, W	30	30	30	30	30

ELECTRICAL FEATURES

Voltage, V	220/240	220/240	220/240	220/240	220/240
Frequency, HZ	50/60	50/60	50/60	50/60	50/60
Maximum connection rating, W	3.552	3.552	3.552	3.552	3.552
Cable connection lenght, cm	150 + Plug	110	110	110	110



TECHNICAL FEATURES

Model	iOVEN	HLB 860	HLB 850	HLB 840	HLB 830	HSB 645	HSB 640 BLACK HSB 640 WHITE	HSB 635
Energy Efficiency Index (EEI)	81	81	81	81	81	81	81	81
Energy Efficiency Class	A+	A+	A+	A+	A+	A+	A+	A+
Energy cosumption per cycle in conventional mode (kWh)	0,83	0,83	0,81	0,81	0,81	0,81	0,81	0,86
Energy consumption per cycle in fan-forced convection mode (kWh)	0,68	0,68	0,68	0,68	0,68	0,68	0,68	0,68
Number of cavities	1	1	1	1	1	1	1	1
Heat source	Electric	Electric	Electric	Electric	Electric	Electric	Electric	Electric
Volume (l)	70	70	70	70	70	70	70	70

DIMENSIONS

External, mm	595x595x 559	595x595x 559	595x595x 559	595x595x 559	595x595x 559	595x595x 559	595x595x 559	595x595x 559
Inner cavity, mm	367x475x405	367x475x405	367x475x405	367x475x405	367x475x405	367x475x405	367x475x405	367x475x405

CLEANING SYSTEMS

DualClean	-	-	-	-	-	-	-	-
Pyrolytic	-	-	-	-	-	-	-	-
HydroClean®	PRO	PRO	PRO	PRO	PRO	PRO	PRO	PRO
Enamel	Slippery	Slippery	Slippery	Slippery	Slippery	Slippery	Slippery	Slippery

FEATURES

Type	Multifunction Turbo	Multifunction Turbo	Multifunction Turbo	Multifunction Turbo	Multifunction	Multifunction Turbo	Multifunction Turbo	Multifunction
Stainless steel (fingerprint proof)	•	•	•	• / White	•	•	•	•
Cooking functions	18	12	9	9	6	9	9	8
Temperature regulator	30-270°	30-270°	50-250°	50-250°	50-250°	50-250°	50-250°	50-250°
Touch Control	• / TFT 5"	• / TFT 4"	• / LED display	• / LED display	• / LED display	• / LED display	• / LED display	• / LED display
LED ring iluminated knobs	-	•	-	-	-	-	-	-
SoftClose	•	•	•	-	-	-	-	-
Recipes	50 recipes	20 recipes	-	-	-	-	-	-
Meat probe	•	-	-	-	-	-	-	-
SlowCook: low temperature cooking	•	•	-	-	-	-	-	-
Tangential ventilation	•	•	Dynamic	Dynamic	Dynamic	Dynamic	Dynamic	Dynamic
Express quick heating	Automatic	Automatic	•	•	•	•	•	•
Telescopic guides	2 Full easy slide	1 easy slide	1 easy slide	1 easy slide	1 easy slide	1 easy slide	1 easy slide	1 easy slide
Drop-down grill	•	•	•	•	-	-	-	-
Light	2 side LED, 4W	25W	25W	25W	25W	25W	25W	25W

SAFETY SYSTEMS

Full glazed door	3 removable	2 removable	3 removable	2 removable	2 removable	2 removable	2 removable	2 removable
Automatic disconnection security system	•	•	-	-	-	-	-	-
Children safety	•	•	•	•	•	•	•	•
Grill protection	•	•	•	•	•	•	•	•
Anti-tip tray system	•	•	•	•	•	•	•	•

ACCESORIES

MultiCook /cast aluminium tray	1 / optional	optional	optional	optional	optional	optional	optional	optional
Anti-tip baking / deep tray (50 mm)	1 / 1	- / •	• / •	- / •	- / •	• / •	• / •	• / •
Anti-tip reinforced / cooking grid	2 / -	• / -	• / -	• / -	- / •	- / •	- / •	- / •

POWER CONSUMPTION

Turbo, W	2.000	2.000	2.000	2.000	-	2.000	2.000	-
Grill / Maxi grill, W	1.100/2.500	1.100/2.500	1.100/2.500	1.100/2.500	1.100/2.500	1.100/2.500	1.100/2.500	1.100/2.500
Traditional, W	2.550	2.550	2.550	2.550	2.550	2.550	2.550	2.550
Multifunction motor, W	22	22	22	22	22	22	22	22
Bottom heat, W	1.150	1.150	1.150	1.150	1.150	1.150	1.150	1.150
Cooling fan motor, W	18	18	18	18	18	18	18	18

ELECTRICAL FEATURES

Voltage, V	220/240	220/240	220/240	220/240	220/240	220/240	220/240	220/240
Frequency, HZ	50/60	50/60	50/60	50/60	50/60	50/60	50/60	50/60
Maximum connection rating, W	3.198	3.215	3.215	3.215	2.615	3.215	3.215	2.615
Cable connection lenght, cm	150 + Plug	150 + Plug	110	110	110	110	110	110

1) In a scale embracing from A (more efficient) to G (less efficient). Commission directive 2002/40/EC. According to Norm EN50304: 2014 update 65/2014. Models that are steam only or including microwave not subject to legislation. Subject to change without notice.





TECHNICAL FEATURES

PRODUCT FICHE ACCORDING TO COMMISSION DELEGATED REGULATION (EU) NO 65/2014

Model	HSB 630	HSB 615	HSB 610	HBB 605	HBB 535	HBB 510	HBB 435 HBB 490
Energy Efficiency Index (EEI)	81	84,7	84,7	84,7	94,8	94,8	95,3
Energy Efficiency Class	A+	A	A	A	A	A	A
Energy cosumption per cycle in conventional mode (kWh)	0,86	0,82	0,82	0,82	0,83	0,83	0,81
Energy consumption per cycle in fan-forced convection mode (kWh)	0,68	0,71	0,71	0,71	-	-	-
Number of cavities	1	1	1	1	1	1	1
Heat source	Electric	Electric	Electric	Electric	Electric	Electric	Electric
Volume (l)	70	70	70	70	76	76	72

DIMENSIONS

External, mm	595x595x 559	595x595x 559	595x595x 559	595x595x 559	595x595x 559	595x595x 559	595x595x 559
Inner cavit y, mm	367x475x405	367x475x405	367x475x405	367x475x405	367x475x441	367x475x441	367x475x441

CLEANING SYSTEMS

DualClean	-	-	-	-	-	-	-
Pyrolytic	-	-	-	-	-	-	-
HydroClean®	PRO	ECO	ECO	ECO	ECO	ECO	-
Enamel	Slippery	Slippery	Slippery	Slippery	Slippery	Slippery	Slippery

FEATURES

Type	Multifunction	Multifunction	Multifunction	Multifunction	Conventional	Conventional	Conventional
Stainless steel (fingerprint proof)	White/Black	•	White/Black	•	•	Black	White/Black
Cooking functions	8	6	6	6	3	3	3
Temperature regulator	50-250°	50-250°	50-250°	50-250°	50-250°	50-250°	50-250°
Touch Control	• / LED display	Minute Minder	Minute Minder	Minute Minder	Minute Minder	Minute Minder	-
LED ring iluminated knobs	-	-	-	-	-	-	-
SoftClose	-	-	-	-	-	-	-
Recipes	-	-	-	-	-	-	-
Meat probe	-	-	-	-	-	-	-
SlowCook: low temperature cooking	-	-	-	-	-	-	-
Tangential ventilation	Dynamic	Dynamic	Dynamic	Dynamic	Dynamic	Dynamic	Dynamic
Express quick heating	•	•	•	•	-	-	-
Telescopic guides	1 easy slide	1 easy slide	1 easy slide	-	-	-	-
Drop-down grill	-	-	-	-	-	-	-
Light	25W	25W	25W	25W	25W	25W	25W

SAFETY SYSTEMS

Full glazed door	2 removable	2 removable	2 removable	2 removable	2 removable	2 removable	2 removable
Automatic disconnection security system	-	-	-	-	-	-	-
Children safety	•	-	-	-	-	-	-
Grill protection	•	•	•	•	•	•	•
Anti-tip tray system	•	•	•	•	•	•	•

ACCESORIES

MultiCook / cast aluminium tray	optional	optional	optional	optional / -	optional / -	optional / -	optional / -
Anti-tip baking / deep tray (50 mm)	- / •	• / •	- / •	- / •	- / •	- / •	- / •
Anti-tip reinforced / cooking grid	- / •	- / •	- / •	- / •	- / •	- / •	- / •

POWER CONSUMPTION

Turbo, W	-	-	-	-	-	-	-
Grill / Maxi grill, W	1.100/2.500	1.400 / -	1.400 / -	1.400 / -	1.400 / -	1.400 / -	1.400 / -
Traditional, W	2.550	2.550	2.550	2.550	2.550	2.550	2.550
Multifunction motor, W	22	22	22	22	-	-	-
Bottom heat, W	1.150	1.150	1.150	1.150	1.150	1.150	1.150
Cooling fan motor, W	18	18	18	18	18	18	18

ELECTRICAL FEATURES

Voltage, V	220/240	220/240	220/240	220/240	220/240	220/240	220/240
Frequency, HZ	50/60	50/60	50/60	50/60	50/60	50/60	50/60
Maximum connection rating, W	2.615	2.615	2.615	2.615	2.593	2.593	2.593
Cable connection lenght, cm	110	110	110	110	110	110	110



TECHNICAL FEATURES

Model	COMBO 45.15	HL 940	HL 940 WHITE	HS 900	HDL 888	HDL 718
Energy Efficiency Index (EEI) - Main/Top cavity	95,8	98,9	98,9	103,4	106,3/94,1	88,7/107,4
Energy Efficiency Class - Main/Top cavity	A/-	A/-	A/-	A/-	A/A	B/A
Energy cosumption per cycle in conventional mode (kWh) - Main/Top cavity	0,7/-	1,10/-	1,10/-	0,7/-	-/0,64	-/0,73
Energy consumption per cycle in fan-forced convection mode (kWh) - Main cavity	0,68	0,86	0,86	0,7	0,84	0,63
Number of cavities	2	1	1	1	2	2
Heat source - MainMain/Top cavity	Electric	Electric	Electric	Electric	Electric	Electric
Volume (l) - MainMain/Top cavity	38/18	77 / -	77 / -	77 / -	57 / 31	38 / 31

DIMENSIONS

External, mm	595	480	480	480	888	718
Width, mm	595	890	890	890	595	595
Depth, mm	562	560	560	560	562	562
Inner height, mm	215/117	318	318	318	161/313	161/215
Inner width, mm	452/418	639	639	639	438/455	438/452
Inner depth, mm	395/368	380	380	380	425/396	425/395

CLEANING SYSTEMS

HydroClean®	-	PRO	PRO	ECO	-	-
Easy cleaning enamel	• / -	Slippery	Slippery	Slippery	•	•

FEATURES

Type	Combo Multifunction	Multifunction Turbo	Multifunction Turbo	Multifunction	Multifunction Turbo double oven	Multifunction Turbo double oven
Stainless steel (fingerprint proof)	•	•	White	•	•	•
Cooking functions	5	9	9	7	4 + 4	4 + 1
Touch control digital timer	•	•	•	-	•	•
Analogic timer with stop programmer	-	-	-	-	-	-
Mechanical timer with stop programmer	-	-	-	•	-	-
Telescopic tray guides	- / •	1+1 total	1+1 total	-	-	-
Chromed tray guides	• / -	•	•	•	•	•
MCS Mix Chamber System	-	-	-	-	-	-
Forced refrigeration	Tangential	Tangential	Tangential	Tangential	Tangential	Tangential
Fume scape outlet	Vault/rear	Vault	Vault	Vault	Vault	Vault
Light	25+25	Side 25+25	Side 25+25	25 + 25	25 + 25	25 + 25

SAFETY SYSTEMS

Glazed door	2	3	3	2	2	2
Door opening security disconnection	•	•	•	-	-	-
Children safety	•	•	•	-	•	•
Grill protector	•	•	•	•	•	-
Anti-tip tray system	•	•	•	•	•	•
Safety thermostat	•	•	•	•	•	•

ACCESORIES

Baking tray	1	1	1	-	-	-
Deep tray, 50 mm	1	1	1	1	1 + 1	1
Chromed cooking grid	1	1	1	1	1 + 2	2 + 1
Tray handle	-	-	-	-	1	1

POWER CONSUMPTION

Turbo, W	-	2400	2400	-	0 + 2000	0 + 1800
Grill / Maxi grill, W	1400/1800	1700 / 2750	1700 / 2750	1700/2750	1500/1100	1500/1100
Traditional, W	2450/3600	2755	2755	2755	-	-
Multifunction motor, W	30/-	30	30	30	0 + 27	0 + 27
Bottom heat, W	1050/1800	1055	1055	1055	1050+0	1050+0
Cooling fan motor, W	18	18	18	18	18	18

ELECTRICAL FEATURES

Voltage, V	220-240	220/240	220/240	220/240	220/240	220/240
Frequency, HZ	50/60	50/60	50/60	50/60	50/60	50/60
Maximum connection rating, W	2655-3643	3553	3553	2848	5322	4498
Cable connection lenght, cm	110	190+plug	190+plug	110	-	-



TECHNICAL FEATURES

PRODUCT FICHE ACCORDING TO COMMISSION DELEGATED REGULATION (EU) NO 65/2014

Model	HR 750 AT/BG B/G	HR 650 AT	HR 550 AT/BG B/G	HGR 650 AT/BC B	HGL 924 HGL 824	FGA 820
Energy Efficiency Index (EEI)	101,3	101,3	100	112,88	129,4	112,88
Energy Efficiency Class	A	A	A	B	B	B
Energy cosumption per cycle in conventional mode (kWh)	0,83	0,84	0,79	1,73	2,36	1,73
Energy consumption per cycle in fan-forced convection mode (kWh)	0,8	0,8	0,86	1,87	2,54	-
Number of cavities	1	1	1	1	1	1
Heat source	Electric	Electric	Electric	Gas	Gas+electric	Gas
Volume (l)	57	57	57	45	69	45

DIMENSIONS

Height, mm	595	595	595	595	595	595
Width, mm	595	595	595	595	898/798	595
Depth, mm	562	562	562	562	559	562
Inner height, mm	313	313	313	320	308	315
Inner width, mm	455	455	455	419	615	466
Inner depth, mm	396	396	396	395	388	396

CLEANING SYSTEMS

HydroClean®	-	-	-	-	-	-
Easy cleaning enamel	•	•	•	•	•	•

FEATURES

Type	Multifunction Turbo	Multifunction Turbo	Multifunction	MF gas oven + gas Grill	Gas oven + electric grill	Gas oven + electric grill
Stainless steel (fingerprint proof)	Anthracite/Beige / Bright Cream B - brass	Anthracite B - brass	Anthracite/Beige / Bright Cream B - brass	Anthracite B / Bright Cream B - brass	•	•
Cooking functions	9	9	5	4	5	4
Touch control digital timer	-	-	-	-	-	-
Analogic timer with stop programmer	•	•	•	•	-	-
Mechanical timer with stop programmer	-	-	-	-	•	•
Telescopic tray guides	2	1	1	-	-	-
Chromed tray guides	•	•	•	•	•	•
MCS Mix Chamber System	-	-	-	-	-	•
Forced refrigeration	Dinamic	Dinamic	Dinamic	Tangential	Tangential	Tangential
Fume scape outlet	Vault	Vault	Vault	Vault	Vault	Vault
Light	25	25	25	25	25+25	25

SAFETY SYSTEMS

Glazed door	2	2	2	2	3	2
Door opening security disconnection -/	•	-	-	-	-	-
Children safety	-	-	-	-	-	-
Grill protector	•	•	•	-	-	-
Anti-tip tray system	•	•	•	•	•	•
Safety thermostat	•	•	•	•	•	•

ACCESORIES

Baking tray	1	-	-	-	-	-
Deep tray, 50 mm	1	1	1	1	1	1
Chromed cooking grid	1	1	1	1	1	1
Tray handle	-	-	-	-	-	-

POWER CONSUMPTION

Turbo, W	2000	2000	-	27	-	-
Grill / Maxi grill, W	1500 / 2600	1500 / 2600	1400	1800	-	1400
Traditional, W	-	-	-	-	1900	-
Multifunction motor, W	30	30	30	27	30	-
Bottom heat, W	1150	1150	1150	2200	4000	2400
Cooling fan motor, W	18	18	18	18	18	18

ELECTRICAL FEATURES

Voltage, V	220/240	220/240	220/240	220/240	127	220/240
Frequency, HZ	50/60	50/60	50/60	50/60	50/60	50/60
Maximum connection rating, W	2693	3223	2623	70	1998	1447
Cable connection lenght, cm	195+plug	195+plug	195+plug	3 x 0,75	110	110

1) In a scale embracing from A (more efficient) to G (less efficient). Commission directive 2002/40/EC. According to Norm EN50304: 2014 update 65/2014. Models that are steam only or including microwave not subject to legislation. Subject to change without notice.



TECHNICAL FEATURES

Model	HGS 924	HGS 824	HGS 930	HGS 740	FGE 724	FGE 730
Energy Efficiency Index (EEI)	129,4	129,4	129,4	112,88	112,88	112,88
Energy Efficiency Class	B	B	B	B	B	B
Energy cosumption per cycle in conventional mode (kWh)	2,36	2,36	2,28	1,73	1,73	1,73
Energy consumption per cycle in fan-forced convection mode (kWh)	2,54	2,54	2,48	1,87	-	-
Number of cavities	1	1	1	1	1	1
Heat source	Gas+electric	Gas+electric	Gas	Gas	Gas	Gas
Volume (l)	69	69	64	45	45	45

DIMENSIONS

Height, mm	595	595	595	595	595	595
Width, mm	898	798	898	595	595	595
Depth, mm	549	525	549	562	562	562
Inner height, mm	308	308	280	320	315	315
Inner width, mm	615	615	615		466	466
Inner depth, mm	388	388	388	400	390	390

CLEANING SYSTEMS

HydroClean®	-	-	-	-	-	-
Easy cleaning enamel	•	•	•	•	•	•

FEATURES

Type	MF gas oven + electric grill	MF gas oven + electric grill	MF gas oven + gas Grill	MF gas oven + gas grill	Gas oven + electric grill	Gas oven + gas grill
Stainless steel (fingerprint proof)	•	•	•	•	•	•
Cooking functions	5	5	4	4	2	2
Touch control digital timer	-	-	-	-	-	-
Analogic timer with stop programmer	-	-	-	-	-	-
Mechanical timer with stop programmer	•	•	•	•	•	-
Telescopic tray guides	-	-	-	-	-	-
Chromed tray guides	•	•	•	•	•	•
MCS Mix Chamber System	-	-	-	-	•	•
Forced refrigeration	Tangential	Tangential	Tangential	Tangential	Tangential	Tangential
Fume scape outlet	Vault	Vault	Vault	Vault	Vault	Vault
Light	25+25	25+25	25+25	25	25	25

SAFETY SYSTEMS

Glazed door	2	2	2	2	2	2
Door opening security disconnection -/	-	-	-	-	-	-
Children safety	-	-	-	-	-	-
Grill protector	-	-	-	-	-	-
Anti-tip tray system	•	•	•	•	•	•
Safety thermostat	•	•	•	•	•	•

ACCESORIES

Baking tray	-	-	-	-	-	-
Deep tray, 50 mm	1	1	1	1	1	1
Chromed cooking grid	1	1	1	1	1	1
Tray handle	-	-	-	-	-	-

POWER CONSUMPTION

Turbo, W	-	-	-	27	-	-
Grill / Maxi grill, W	2000	-	2500	1800	1400	2000
Traditional, W	-	1900	-	-	-	-
Multifunction motor, W	30	30	30	27	-	-
Bottom heat, W	4000	4000	4000	2200	2400	2400
Cooling fan motor, W	18	18	18	18	18	18

ELECTRICAL FEATURES

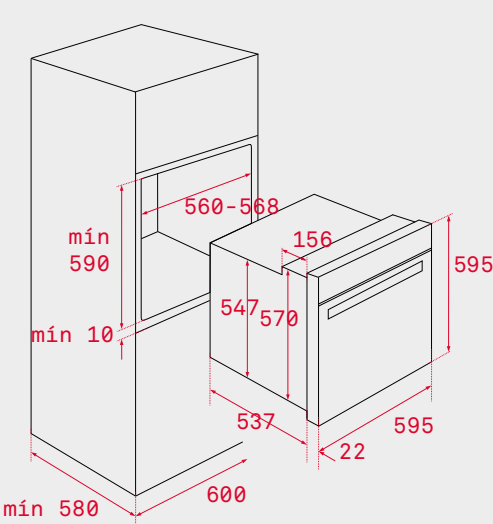
Voltage, V	220/240	127	220/240	220/240	220/240	220/240
Frequency, HZ	50/60	50/60	50/60	50/60	50/60	50/60
Maximum connection rating, W	2098	1998	98	70	1443	43
Cable connection lenght, cm	110	110	110	3 x 0,75	110	110



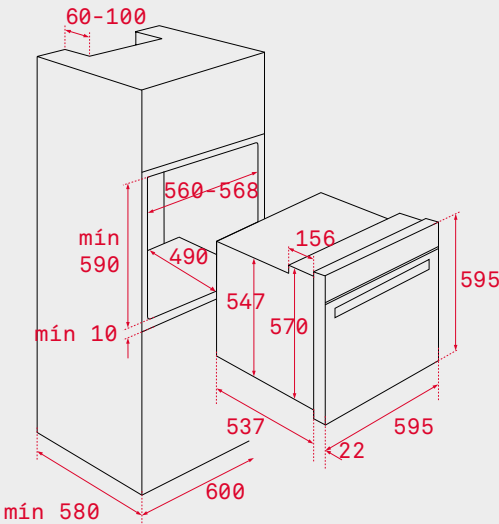


INSTALLATION DIAGRAM

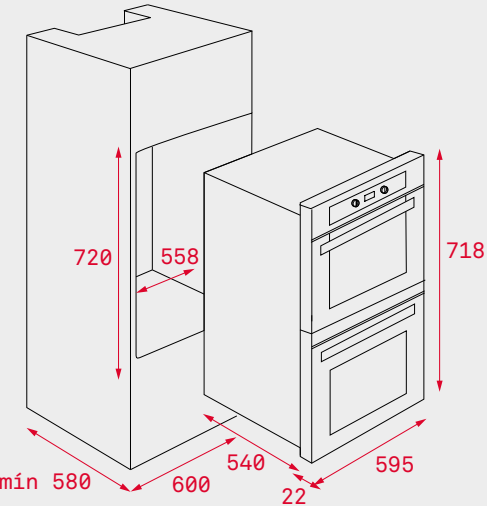
HLB 860 P • HLB 840 P • HSB 635 P  
HSB 630 P • HSB 625 P • HSB620 P



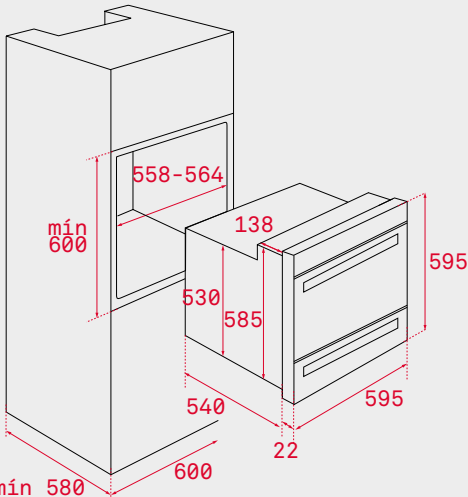
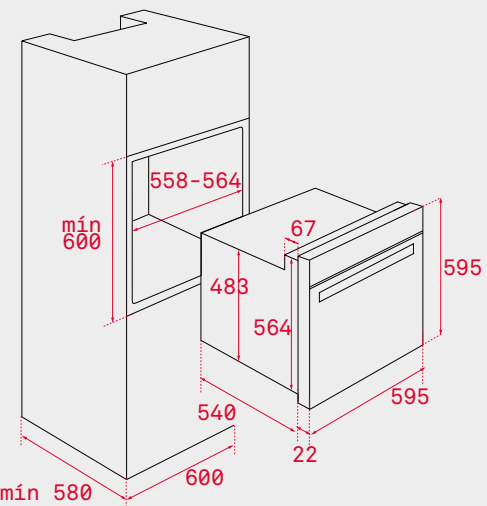
IOVEN • HLB 860 • HLB 850 • HLB 840  
HLB 830 • HSB 645 • HSB 635 • HSB 615  
HSB 630 • HSB 610 • HBB 605 • HBB 535  
HBB 435 • HBB 510 • HBB 490



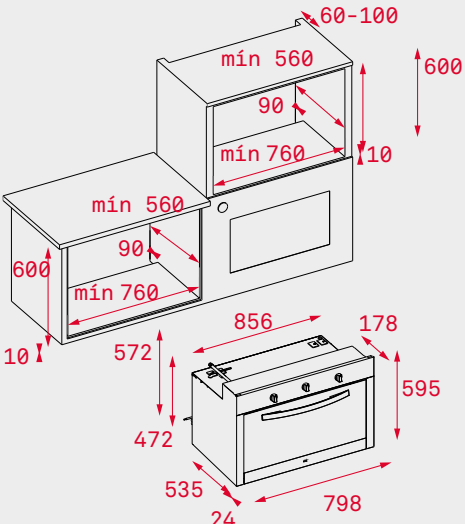
HDL 718



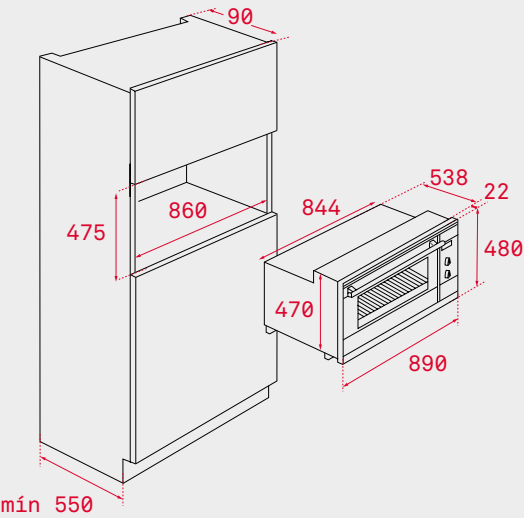
HR 750  
HR 550  
HR 650  
HGR 650



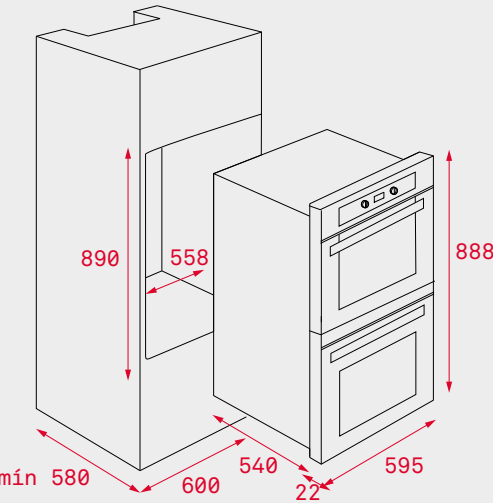
COMBO HL 45.15



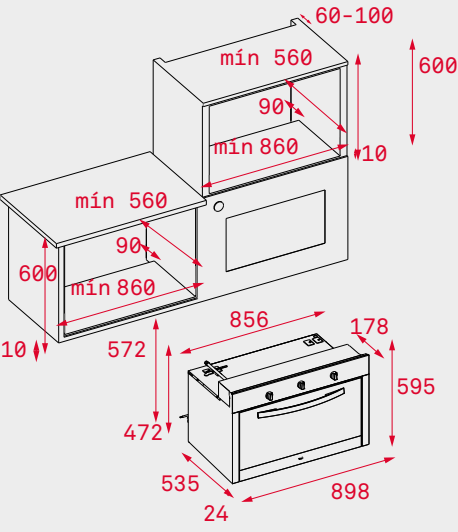
HGS 824  
HGL 824



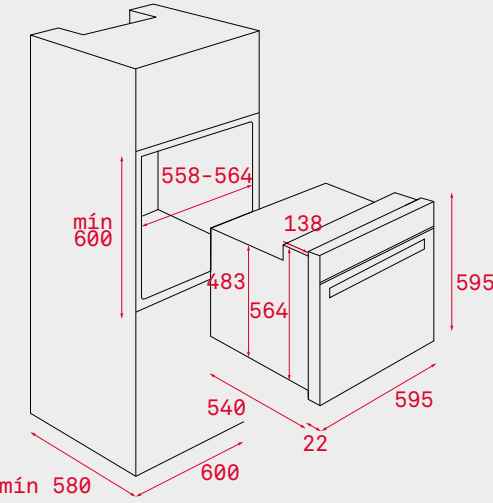
HL 940 • HS 900



HDL 888



HGS 930 • HGS 924 • HGL 924



FGA 820 • FGA 730 • FGA 724



INSTALLATION DIAGRAM