



SALES CATALOGUE

2022 INTERNATIONAL SALES
WATER TREATMENT IN PERFECTION

Water is our passion



Water is the elixir of life and a limited resource.

Water is not always and everywhere available in the best quality – especially drinking water.

BWT has therefore set itself the task of treating existing water on site, to make it available at the desired quality.

We are committed to working sustainably, conserving the precious resources of our blue planet.





BWT - EUROPE'S LEADING WATER TECHNOLOGY COMPANY

1

Our leading know-how, innovative technologies and high-quality products enable us to supply optimum water quality to all business sectors and many different applications.



2

INNOVATION FORCE

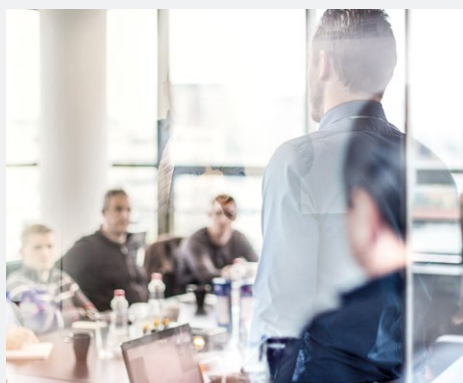
BWT's research and development departments are focused on pioneering innovations in all the areas of water technology. Our main objective here is to use resources sparingly, set quality standards and ensure that products are hygienic and safe.



3

STRONG BRAND RECOGNITION & MARKETING POWER

Marketing power is the key to accelerate our brand and increase BWT's popularity. That's why we invest in eye-catching sports sponsorship such as F1, Ski jumping, motorsport as well as in trade fairs, strong TV advertising, POS concepts and much more.



4

TRAINING AND SERVICE

We support our partners worldwide by offering a wide range of training in the different product segments. BWT knows the needs in the regions and offers corresponding service. This strengthens our global dealers and customers and has made us successful together for many years.

approx. 5.500 employees

12 production sites



24 assembling sites

12 R&D centres



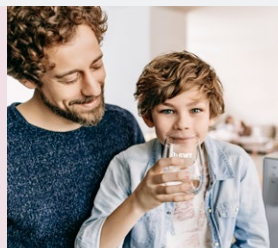
BWT – Europe's Leading Water Technology Company

Whenever in life you come into contact with water, you can rely on the proven technologies and decades of experience from BWT.

BWT's longstanding know-how in all areas of water treatment, ensures safety, hygiene and health in dealing with our elixir of life, water.

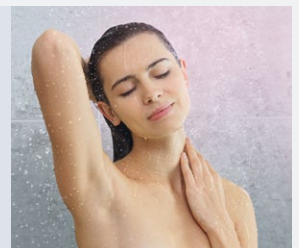
Drinking water

Individual water treatment:
Drinking water mineralised with
magnesium, zinc and silica.



Domestic technology

Silky-Soft Pearl Water in shower
and bath. Heating protection,
filtration systems and much more.



Commercial technology

Highest hygienic safety for
drinking and process water
installations. Pure and ultrapure
water for industrial processes.



Pharma and biotech

Systems and solutions for supply
of ultra-pure media for medicine,
pharmaceuticals and cosmetics.





Gastronomy

Water treatment for professional coffee machines, dishwashers and kitchen appliances such as steam cookers, ovens, ice machines, water dispensers and much more.



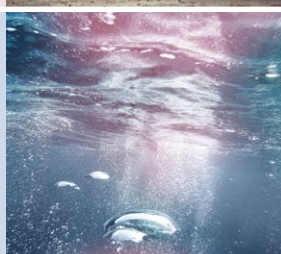
Swimming pool technology

Individual swimming pool solutions for private households, hotels and municipalities.



Seawater desalination

Saltwater treatment for the different requirements in the most remote areas of this world.



Fuel cell

The energy converter of the 21st century – with zero emissions. Membranes for a future-oriented energy and water supply with hydrogen as THE energy carrier.





BWT
CHANGE
THE WORLD
sip by sip

„CHANGE THE WORLD - SIP BY SIP“

is the message behind our Bottle Free Zone concept. It is BWT's goal, to provide people all over the world with healthy, safe, tasty drinking water straight from the tap. At the same time working to reduce single-use plastic waste, transport costs and CO₂ emissions.



BWT
BOTTLE FREE
ZONE



Local water – treated and mineralized with Magnesium, Zinc or Silicate.

Thanks to innovative, patented BWT technologies, safe and great-tasting mineralized water comes directly from the tap, a water dispenser or a table water filter. Create your own „BWT Bottle Free Zone“ – in your home, in hotels, restaurants, schools or public buildings.



The world of sports is pink – and becomes more and more plastic bottle free

One of the goals is to rid the Formula 1 paddocks of single-use plastic bottles in the next few years. BWT is providing water dispensers with local, magnesium-mineralized water for drivers, crew and fans throughout the paddock and in the Paddock Club. But numerous other sporting events and clubs are now relying on BWT mineralized water. A strong symbol for BWT Bottle Free Zones and the mission „Change the World – sip by sip“.



“We want to use local water resources to help making the world a better place, sip by sip.

Andreas Weißenbacher
BWT founder and CEO

“I’m proud of our company – we share our economic success with people in need, and support them locally by providing sustainable water systems.



b.waterMISSION

BWT uses its expertise in water treatment providing access to clean water for local people. Demonstrating Corporate Social Responsibility as part of the b.waterMISSION project, a total of 10,000 wells are being built in Gambia, Tanzania and surrounding areas with the help of BWT.



Best Water Home

FOR A SAFE AND HEALTHY HOME



BEST WATER TAP

Standalone solution for one tap, installed under-the-sink

BEST WATER TAP

BEST WATER HOUSE

Hygiene concept for an entire house, installed where main pipe enters

We ensure highest water quality
for you and your family!

BWT water technology offers a broad water treatment portfolio with solutions for all kind of water issues and enriched with valuable minerals. Customized for local needs and every budget – for central and de-central installation.

Flexible solutions with modular, serial products

BWT leads the market with innovative technology, expertise, and know-how. This was acquired over many years of pioneering hard work based on our strict German water standards (DVGW). Our ground-breaking water treatment technology and products guarantee the highest levels of safety, hygiene and comfort in your daily relationship with water – our elixir of life.



1

BWT ESSENTIALS

In the role of a 'safeguard', BWT ESSENTIALS are the first step of water treatment. Particle filtration protects pipes and appliances against sediments, dirt, rust, etc., prevents clogging and bacterial growth.



2

BWT FRESH WATER

Discover our 'experts' for the most difficult water problems, e.g. bad smell and taste, chlorine, organics, heavy metals or arsenic. The BWT Multi-layer filters are tested under toughest conditions and convince through high-quality filter media.



3

BWT PEARL WATER

BWT PEARL WATER systems will provide moments of true wellbeing as you are pampered from morning 'til night. BWT PEARL WATER brings more benefits: protecting pipes, taps and appliances against limescale on the one hand, and saving money on the other.



4

BWT PERFECT WATER

Keep your water free of harmful bacteria, viruses and germs with BWT UV disinfection, RO systems or ozone technology. BWT PERFECT WATER – for a maximum of hygiene & safety. Reliable and environmentally friendly.



5

BEST WATER TAP

Enjoy safe and tasty water enriched in minerals – right from your kitchen tap. You can choose between Woda-Pure BWT Magnesium Mineralizer, BWT THERO with RO technology or compact Magnesium Mineralizer table water filter, all depending on your budget and preferences.

Our name is our promise

BEST WATER TECHNOLOGY



From small to big capacities, for residential homes to industry and trade applications – BWT provides professional water treatment and various technologies – **from one single source.**

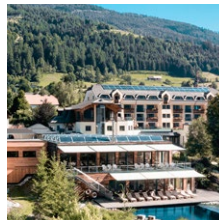
We supply many business areas and application fields



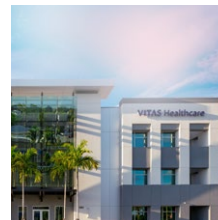
BEST  WATER
HOME



BEST  WATER
HIGH-RISE








BEST  WATER
HOTELS



BEST  WATER
HEALTHCARE



BEST  WATER
RESTAURANTS

-  **Highest product quality** and best materials
-  **Modular, flexible package solutions** with modular, serial products for central and de-central water treatment
-  **Best service,** installation and low maintenance costs
-  **Proven experience,** leading know-how, consistent R&D
-  **Strictest hygiene concepts** according to international certified standards

BWT – the brand you can trust!

CONTENTS

BWT ESSENTIALS

E1 Single-Lever Filter	p. 16
R1 Backwash Filter	p. 22
Infinity M, A & AP	p. 24
Multipur M	p. 28
Multipur AP	p. 29
Connection Equipment	p. 30

BWT FRESH WATER

Multi-layer Filters	p. 40
Bewamat COMB/PRO	p. 44

BWT PEARL WATER

BWT Perla model line	p. 54
AQA perla XL & AQA life	p. 62
BWT Bewamat 25A & 75A	p. 64
BWT Perla Silk	p. 66
Rondomat Duo	p. 68

ANTI-SCALING TECHNOLOGY

AQA total Energy	p. 88
AQA nano	p. 91

BWT PERFECT WATER

UV water disinfection	p. 94
B-Safe	p. 96
Bewades UV – overview	p. 100
Bewades blue	p. 102
Bewades series	p. 104
BWT RO ₃ UV	p. 107
PERMAQ® Pico	p. 112

BEST WATER TAP

BWT Woda-Pure series	p. 120
----------------------	--------

SPECIAL PROGRAMME

AQA therm MOVE power	p. 128
AQA therm heating protection	p. 129
Rapid descaling	p. 130

BWT ESSENTIALS

PARTICLE FILTRATION



Protection Filter up to DN 150

SELECTION TABLE



Type of device	E1 EHF / HWS	R1 RF / HWS	Infinity M, A and AP RF / HWS	Bolero RF / HWS
	Single lever filter	Manual backwash filter	Manual + Automatic backwash filter	Manual backwash filter
Dimensions	3/4" – 1 1/4"	3/4" – 1 1/4"	3/4" – 2"	3/4" – 2"
Connection method	integrated/HydroMODUL	HydroMODUL	HydroMODUL/4-hole connection	HydroMODUL/4-hole connection
Type of filter	EHF / HWS	RF / HWS	RF / HWS	RF / HWS
DVGW	■	■	■	■
Protection against damage of installations and household appliances by dirt particles	■	■	■	■
Protection against pitting corrosion	■	■	■	■
Technical features				
Comfort maintenance	■	–	–	–
Nominal pressure PN (bar) (PSI)	16 232	16 232	16 232	16 232
With pressure reducer	– / ■	– / ■	– / ■	– / ■
Time or differential pressure controlled	–	–	– / ■	–
Page number	16	22	24	26

■ included

□ optional

– not available

Extract from DIN 1988–200: 2012–05

12.3.3 Solid particles

Solid particles, without taking account of their nature or origin, settle in pipes. As a result, they can produce differently ventilated areas in the pipes, in which the metal that is covered with the deposit acts as an anode. Deposits can also encourage the propagation of microorganisms. Such occurrences can cause corrosion, which is left undetected and can lead to perforations in pipes. Solid particles can also lead to functional problems for connected fittings and equipment.



Protector BW	Protector mini	Multipur M 50/65/80/100 125/150		Multipur AP 65/80/100 125/150	
Manual backwash filter	Manual rinse filter	Manual backwash filter		Automatic backwash filter	
3/4" – 1"	1/2"	DN 50/65/80/100	DN 125/150	DN 65/80/100	DN 125/150
integrated	integrated	Flange	Flange	Flange	Flange
RF	C/R	RF	RF	RF	RF
–	–	■	–	■	–
■	■	■	■	■	■
■	■	■	■	■	■
–	–	–	–	–	–
10 145	16 232	10 145	10 145	10 145	10 145
–	–	–	–	–	–
–	–	–	–	■	■
26	26	28	28	29	29

E1 Single-lever filter

HYGIENIC, COMFORTABLE, SAFE



Drinking water hygiene can be so easy!

On the way from the water supplier to the house, dirt particles such as sand or rust can get into the water and subsequently into the water installation. These contaminants can cause leaky faucets and costly damage to home appliances. In addition, the hygiene of the drinking water can be affected by this pollution, as it is an optimal breeding ground for germs and bacteria in your customers' pipes.

An optimally maintained water protection filter is therefore important for the hygiene of the water and should be available in every house as part of the domestic water installation. Be on the safe side and rely on the outstanding quality of BWT for your customers by installing the E1 single-lever filter. In addition, the integrated pressure reducer helps to save up to a third of water.

E1 Single-lever filter

With high-quality comfort controls, a free reminder service for maintenance and a beautiful design, it ensures protection and security for a lifetime.

*Click here
for E1 clip*



1

INNOVATIVE SINGLE-LEVER SYSTEM

Unlock, pull up the lever and insert the new hygiene vault. No other product like the E1 single-lever filter from BWT, perfectly combines simple operation with optimal drinking water hygiene.

2

EXTENSIVE PROTECTION

Drinking water hygiene is no coincidence. Regular maintenance of the protective filter is essential. In order to make the maintenance of the protective filter even more convenient and safe, BWT developed the E1 single-lever filter with a hygiene vault and free reminder service via the Best Water Home app or email.

3

BEST WATER HOME APP

When registering your product at www.myproducts.bwt.com or in the Best Water Home App, an email remind to change the filter element.



E1 hygiene vault

GUARANTEED FOLLOW-UP BUSINESS



1 UNLOCK

Unlock the lever and thus simultaneously and automatically stopping the water



2 LIFT

Lift the single-lever to eject the hygiene vault and filter element.



3 INSERT

Insert the new hygiene vault (filter cup and filter element). Close the lever. Unlock. Finished.



Thirty seconds makes a huge difference. This is how little time it takes to change the hygiene vault of the BWT E1 single-lever filter. Without tools. Without dirt.



Filter element with 30 µm available



New with 30% more filter surface



Hygiene vault PLUS

100µ Filter element PLUS

E1 Single-lever filter

E1 HWS with pressure reducer

BWT E1	¾" HWS	1" HWS	DN 32 (1¼") HWS
Type filterelement	E1	E1	E1 PLUS
Connection thread	¾" G	1" G	1¼" G
Order no.	40384	40385	40386

E1 EHF without pressure reducer

BWT E1	¾" (1") EHF	DN 32 (1¼") EHF
Type filter element	E1	E1 PLUS
Connection thread	¾" G + 1" G	1¼" G
Order no.	40382	40383

Technical data and dimensions

	Typ	EHF ¾" (1")	EHF DN 32 (1¼")	HWS ¾"	HWS 1"	HWS DN 32 (1¼")
Nominal width	DN	20	25	20	25	25
Swivel nut thread		G 1 ¼"	G 1 ½"	G 1 ¼"	G 1 ¼"	G 1 ½"
Mesh size	µm			100		
Flow rate at Δp = 0,2 bar**	m³/h	1.6	2.8	-	-	-
Flow rate at Δp = 0,5 bar**	m³/h	2.3	3.6	-	-	-
Flow rate*	m³/h	-	-	2.3	3.6	4.0
Output pressure after pressure reducing valve	bar	-	-		2-6	
Operating pressure min./ max.	bar			2/16		
Water temperature min./max.	°C			5/30		
Ambient temperature min./max.	°C			5/40		
Overall length without fitting	mm	100	120	100	100	120
Overall length with fitting	mm	185	218	197	199	218
Total height E1 NEW EHF/HWS	mm	381	399	399	399	399
Pipe centre to wall	mm			80-120		

* EN 1567

** DIN 1988-200, EN 13443

Hygiene vault & filter elements

Description	Order no.
1 E1 Hygiene vault 100 µm*	20393
E1 Hygiene vault 30 µm*	20375
2 E1 Filter element 2pcs 100 µm**	10386
3 E1 Hygiene vault PLUS 100 µm with 30 % larger filter area	20395
4 E1 Filter element PLUS 100 µm 2pcs with 30 % larger filter area	20394

* Only available as 20 pcs (20 × 1 pack) per packing unit in covering box.

** Only available as 24 pcs (24 × 2 pack) per packing unit in covering box.



E1 HWS

E1 EHF

- E1 single-lever filter:
Hygiene from the production to operation
- innovative hygiene vault
Including filter element
- No touching of parts that come
into contact with drinking water
- Change the filter element in
less than 30 seconds



E1 HYGIENE VAULT



E1 FILTER ELEMENTS 2PCS



E1 HYGIENE VAULT PLUS

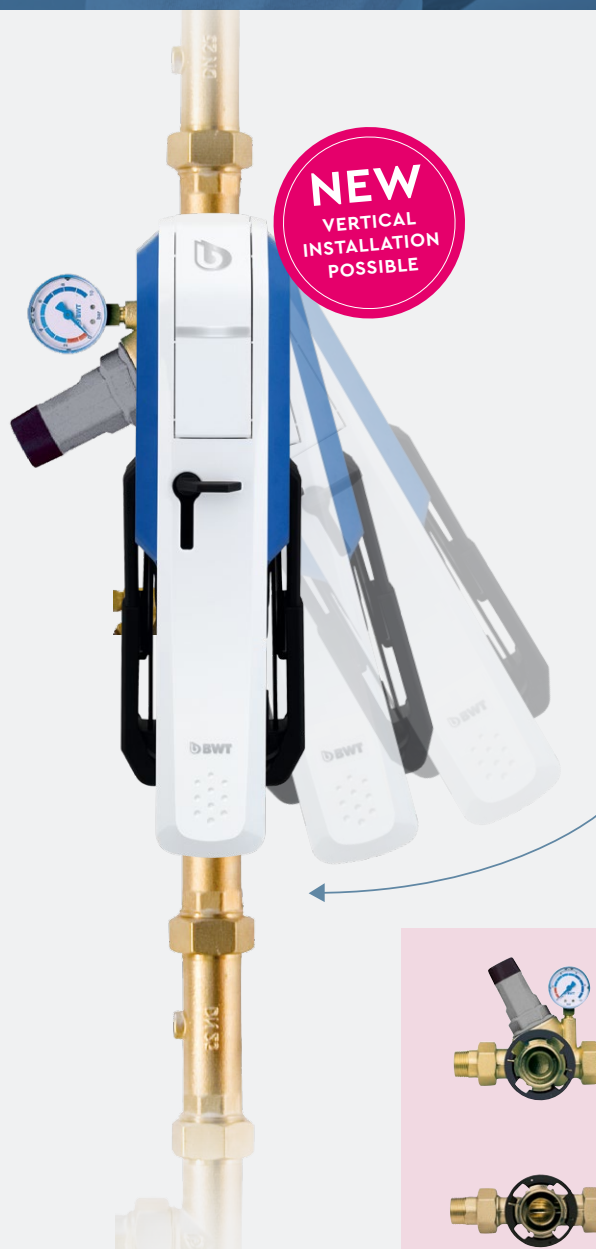


E1 FILTER ELEMENTS PLUS 2PCS



E1 single-lever filter with HydroMODUL

FASTER FILTER ASSEMBLY AND FASTER FILTER ELEMENT CHANGE



Benefits The best of both worlds

- Faster filter assembly with the proven HydroMODUL connection technology: dock – twist – secure!
- The BWT E1 HydroMODUL can be combined with existing BWT connection modules (with / without pressure reducer). With just one filter you are prepared for every installation situation.
- Vertical installation – thanks to the HydroMODUL connection, the BWT E1 can now also be installed in vertical drinking water pipes, even without an additional wall bracket.
- Larger filter surface: the integrated hygiene vault PLUS of the BWT E1 HydroMODUL, has a 30% larger filter surface (also available separately for upgrading).
- Faster filter element change – without tools, so simple, hygienic and safer than ever.



Necessary for installation!

1

Connection module with **pressure reducer** (HWS – DN20, DN25, DN32)

or



2

Connection module **without pressure reducer** (EHF – DN20, DN25, DN32)

E1 HydroMODUL Size I

BWT E1 EHF HydroMODUL Size I	¾" - 1 ¼"
Connection thread	HydroMODUL
Order no.	40388

Connection module WITHOUT pressure reducer

Connection module	¾"	1"	1 ¼"
Overall length mm without/with fitting	100/184	100/184	105/203
Order no.	10866	10874	10868

Connection module DR WITH pressure reducer

Connection module DR	¾"	1"	1 ¼"
Overall length mm without/with fitting	100/184	100/184	130/228
Order no.	20860	20862	20861

Technical data and dimensions

BWT E1 HydroMODUL	Type	¾" EHF	1" EHF	1 ¼" EHF	¾" HWS	1" HWS	1 ¼" HWS
In combination with		Connection module			Connection module DR		
Nominal width	DN	20	25	32	20	25	32
Connection thread		¾"	1"	5/4"	¾"	1"	1¼"
Mesh size	µm	100					
Flow rate at Δp = 0,2 bar **	m³/h	1,68	2,0	2,0	-	-	-
Flow rate at Δp = 0,5 bar **	m³/h	3.17	3.25	3.1	-	-	-
Flow rate*	m³/h	-	-	-	1.6	3.6	5.8
Output pressure after pressure reducing valve	bar	-	-	-	2–6		
Nominal pressure (PN)	bar	16					
Operating pressure, min./ max.	bar	2.5/16					
Water temperature, min./max.	°C	5/30					
Ambient temperature, min./max.	°C	5/40					
Overall length without fitting	mm	100	100	105	100	100	130
Overall length with fitting	mm	184	184	203	184	184	228

* EN 1567

**DIN 1988-200, EN 13443

Hygiene vault & filter elements

Description	Order no.
1 E1 Hygiene vault 100 µm*	20393
E1 Hygiene vault 30 µm*	20375
2 E1 Filter element 2pcs 100 µm**	10386
3 E1 Hygiene vault PLUS 100 µm with 30 % larger filter area	20395
4 E1 Filter element PLUS 100 µm 2pcs with 30 % larger filter area	20394

* Only available as 20 pcs (20 × 1 pack) per packing unit in covering box.

** Only available as 24 pcs (24 × 2 pack) per packing unit in covering box.

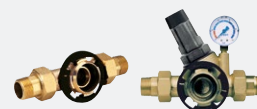


E1 HYDROMODUL

CONNECTION TECHNOLOGY



Don't forget!
To be ordered separately!
(page 32)



SIZE I (¾" - 5/4")



E1 HYGIENE VAULT



E1 FILTER ELEMENT 2PCS



E1 HYGIENE VAULT PLUS



E1 FILTER ELEMENT PLUS 2PCS

BWT R1 Backwash Filter

PRECISE AND POWERFUL

A water filter with proven technology

BWT's R1 backwash filter is installed at the water inlet after the water meter to keep contaminants out of your customers' water installations and prevent dripping faucets throughout the home or malfunction of household appliances.

New connections or maintenance outside your customers' home may be responsible for these contaminants, such as sand or rust particles. But installation is only half the job. The maintenance

of the protective filter is important and crucial for hygienic drinking water. With the installation and regular maintenance of the R1 backwash filter you ensure optimal and hygienic water for your home. The proven technology with the unique 2-phase backwash technology makes the operation of the R1 backwash filter extremely easy for your customers.

Advantages at a glance

- Durable, robust, powerful pioneering design
- Quick installation with HydroMODUL (3/4" to 5/4")
- For horizontal and vertical installation
- Particularly intensive cleaning with 2-phase backwash technology



R1 backwash filter

INCL. HYDROMODUL CONNECTION EQUIPMENT

Compact backwash unit with a large filter area. High performance with 2-phase backwash, top quality, simple to use and with modern & powerful design, for **horizontal or vertical installation**. Filter complete with brass head, transparent cylinder, filter element, backwash element and connection equipment and connection threads.

Type ¾" – 1 ¼" with HydroModul rapid connections for high-speed installation.

Technical specifications: Nominal pressure PN 16, operating pressure min.-max. 2.0 – 16 bar (29 – 232 psi) (water/ambient temperature min.-max. 5–30/5–40 °C (86/104 °F)).

R1 Backwash Filter HWS

Type R1 HWS 90µm		¾"	1"	1 ¼"
DVGW			Yes	
Nominal connection width	DN	20	25	32
Nominal pressure	bar (psi)		16 (232)	
Flow rate DIN EN 1567	m³/h (gpm)	2.3 (10.0)	3.6 (15.8)	5.8 (25.5)
Installation length with connection equipment	mm	186	184	203
Installation length without connection equipment	mm	100	100	105
Order no.		40369	40370	40371

*HWS version with pressure reducer

R1 Backwash Filter RSF

Type R1 RSF 90µm		¾"	1"	1 ¼"
DVGW			Yes	
Nominal connection width	DN	20	25	32
Nominal pressure	bar (psi)		16 (232)	
Flow rate				
at Δ p = 0.2 bar (psi)	m³/h (gpm)	3.4 (15.0)	3.7 (16.3)	4.1 (18.0)
at Δ p = 0.5 bar (psi)	m³/h (gpm)	5.4 (23.8)	6.0 (26.4)	6.7 (29.5)
Installation length with connection equipment	mm	186	184	203
Installation length without connection equipment	mm	100	100	105
Order no.		40364	40365	40366

*RSF version without pressure reducer

Filter element R1

Description	Order no.
Filter element 90µm with wiper	1-902393
Filter element 30µm	1-904894



R1 BACKWASH FILTER HWS



R1 BACKWASH FILTER RSF



Endless varieties

3 TYPES INFINITY (M/A/AP) -
WITH 2 TYPES OF CONNECTION

- Installation in DN 20 / DN 25 / DN 32 with DR/HWS connection module or connection module
- Installation in DN 40 / DN 50 with four-hole flange DR/HWS connection piece or connection piece



Ingenious connection technology

INSTALLED IN SECONDS
WITHOUT TOOLS:
DN 20 / DN 25 / DN 32
Dock – Twist – Secure !



Installation
vertical or
horizontal

Installed with
four-hole flange
DN 40 / DN 50



Extremely robust

- million fold proven filter and connection technology
- DVGW certified
- robust filter head
- huge filter surface
- 2-phase backwash:
 1. coarse particles
 2. profound cleaning of filter element
- operating pressure 2,5 – 10 bar, nominal pressure PN16



 **BWT Best Water Home**

Download on the
 App Store

ANDROID APP ON
 Google play

Can be added to BWT
Best Water Home App

Infinity backwash filters

Water filters that will last for generations. BWT Infinity guarantees an efficient, effective and absolutely safe operation. Of course the materials used can withstand extreme stresses. Safety has never been so long-lasting as with the BWT Infinity which offers operational perfection as a backwash filter with a pressure reducer or as a domestic water station. This backwash technology is characterised by high levels of comfort.

Infinity M BACKWASH FILTER

Filter complete with red brass head and high-tech materials, waste drain connection DN 40, individually packed.

Technical specifications: operating pressure, min.- max. 2.0 – 16 bar (29 – 232 psi), water/ ambient temperature: max. 30/40 °C (86/104°F)

Type Infinity M 90µm		¾"	1"	1 ¼"	1 ½"	2"
DVGW				Yes		
Nominal connection width	DN	20	25	32	40	50
Nominal pressure	bar (psi)			16 (232)		
Flow rate at Δp 0.2 bar/0.5 bar Δp 2.9 psi/7.3 psi	m³/h gpm	3.5/6.0 15.4/26.4	4.5/6.5 19.8/28.6	5.5/9.0 24.2/39.6	10.0/15.5 44.0/68.2	10.0/15.5 44.0/68.2
Installation length without connection module	mm	100	100	105	125	125
Installation length with connection module	mm	184	184	198	240	260
Total height	mm	550	550	550	550	550
Order no.		10305			10306	

Infinity A and AP BACKWASH FILTER

Filter complete with red brass head and high-tech materials, waste drain connection DN 50, individually packed.

Type A and AP: 24V-connection, electronic control unit to control backwash interval.

AP with additional differential pressure controlled backwashing (time priority) and potential-free contact for optical and acoustic remote control, max. 4 filters can be installed in parallel to increase flow rate.

Types ¾" – 1 ¼", size 1, for HydroMODUL-connection

Types 1 ½" – 2", size 2, with 4-hole-flange-connection

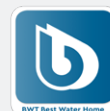
Technical specifications: operating pressure, min. – max. 2.0 – 16 bar (29 – 232 psi), water/ambient temperature: max. 30/40 °C (86/104°F).

Type Infinity A and AP 90µm		¾"	1"	1 ¼"	1 ½"	2"
DVGW				Yes		
Nominal connection width	DN	20	25	32	40	50
Nominal pressure	bar (psi)			16 (232)		
Flow rate at Δp 0.2 bar/0.5 bar Δp 2.9 psi/7.3 psi	m³/h gpm	4.0/7.0 17.6/30.8	5.0/7.5 22.0/33	5.5/9.0 24.2/39.6	10.0/16.0 44.0/70.4	10.0/16.0 44.0/70.4
Installation length without connection module	mm	100	100	105	125	125
Installation length with connection module	mm	184	184	198	240	260
Total height	mm	550	550	550	550	550
Order no. A		10194			10191	
Order no. AP		10258			10259	

*All Infinity filters (M/A/AP) are also available as HWS version with pressure reducer

Filter elements (SAME SIZE FOR ALL INFINITY TYPES)

Description	Order no.
Filter element 50µm	2-060841
Filter element 90µm	2-060562
Filter element 200µm	2-060398
Filter element 300µm	2-060791



INFINITY M/A/AP



SIZE I / SIZE II

CONNECTION MODULE



Don't forget!
To be ordered separately!
(page 32)



SIZE I (¾" – 5/4")



SIZE II (1 ½" – 2")

- Filter complete with red brass head
- High-tech materials
- Proven patented backwash technology



BOLERO RF

- Durable, robust, high-performance
- Top price to performance ratio
- Completely packed with connection technology



PROTECTOR 3/4" - 1" BW

- Comfortable mounting with connection threads
- Reliable protection and prevention of foreign particles in drinking and mains water
- Low operating and investment costs



PROTECTOR MINI C/R

Bolero RF BACKWASH FILTER INCL. CONNECTION EQUIPMENT

The compact backwash filter with the big filter area, with 2-phase backwash, top quality, simple to use and with modern design, for horizontal or vertical installation. Filter complete with brass head, transparent cylinder, filter element per DVGW guidelines, backwash element, connection equipment and connection threads. Type 3/4" + 1 1/4" with HydroModul rapid connections for high-speed installation.

Technical specifications: Nominal pressure PN 16, operating pressure min.-max. 2 - 16 bar (29 - 232 psi), water/ambient temperature, min-max. 5-30/5-40 °C, (86/104 °F).

Type Bolero RF 90µm		3/4"	1"	1 1/4"	1 1/2"	2"
DVGW		Yes				
Nominal connection width	DN	20	25	32	40	50
Nominal pressure	bar (psi)	16 (232)				
Flow rate at Δp 0.2 bar/0.5 bar	m³/h	3.0 (13.2)	3.5 (15.4)	4.0 (17.6)	10.5 (46.2)	11.0 (48.4)
Δp 2.9 psi/7.3 psi	(gpm)	4.0 (17.6)	5.0 (22.0)	6.0 (26.4)	15.5 (68.2)	15.5 (68.2)
Installation length without connection equipment	mm	100	100	100	125	125
Installation length with connection equipment	mm	184	184	203	240	260
Total height	mm	330	330	330	460	460
Order no. RF		10364	10365	10366	10367	10368
Order no. HWS		10369	10370	10371	10372	10373

RF version without pressure reducer
HWS version with pressure reducer

Protector 3/4" - 1" BW BACKWASH FILTER

Cost efficient backwash filter for the filtration of drinking and service water. Operating pressure, min.-max. 2 -16 bar (29-232 psi).

Type Protector BW 90µm		3/4"	1"
Nominal connection width	DN	20	25
Nominal pressure	bar (psi)	16 (232)	
Flow rate at Δp 0.2 bar (2.9 psi)	m³/h (gpm)	3.0 (13.2)	3.5 (15.4)
Operating pressure min./max.	bar (psi)	2/16 (29/232)	
Water temperature min./max.	°C (°F)	5/30 (41/86)	
Installation length	mm	106	100
Total height	mm	280	280
Order no.		10547	

Filter elements for Bolero RF/HWS and Protector BW (DN20/25/32)

Description	Order no.
Filterelement 90µm	1-902393
Filterelement 30µm	1-904894

BWT Protector mini

Compact rinse filter in C/R (Cold/Rinse) version for cold water applications with high quality filter cup.

Technical specifications: nominal connection width DN15, nominal pressure PN16, water/ ambient temperature min./max. 5-30°C, flow rate at Δp = 0,2 bar is 1,6m³/h

BWT Protector mini	C/R 1/2"
Order no.	10523

BWT filter 1/2"

For the use in dentists surgeries, for protection of coffee machines, soda machines, laboratories, canteens, filling of heating systems, building machinery, ice cube makers, humidifying equipment, etc. bleeding screw in the head made of brass.

Technical specifications: Nominal pressure PN 10 (145 psi), water/ambient temperature 30/40°C (86-104°F).

Type BWT filter 1/2" 5µm		1/2"
Nominal connection width	DN	15
Order no.		10500

String-wound filter element

FOR BWT FILTER

Content: 2 pieces

Type for Clarity Filter		
Micron rating	µm	5
Order no.		13971

Folded filter element

FOR PROTECTION FILTER MINI 1/2"

Only available in one box incl. 10 filter elements.

Type		fleece	fabric
Micron rating	µm	30	90
Order no.		10995E	10996E

Avanti WF REPLACEMENT FILTER ELEMENT

Contents: 6 in a box.

Type	DN 20 - 32	DN 40 and 50
Order no.	10932E	10941E

Filter element

FOR CELSIUS 80 DN 20 -50

Content: 6 pieces

Type Filter element	DN 20 - 32	DN 40 - 50
Order no.	10932E	10875E

Replacement filter cartridge

FOR FILTER DN 50, 65 - 80

Delivery only in packaging unit: 12 pieces per carton. Cartridge length 290 mm.

Type Replacement filter cartridge	
Order no.	10865E



BWT FILTER 1/2"



FOLDED FILTER ELEMENT



REPLACEMENT FILTER
CARTRIDGE DN 65 - 80



MULTIPUR M 50/80/100



MULTIPUR M 125/150

- hygienic filter cleaning due to high rinsing speed with suction ring rinsing system, 12 times faster than other systems, operates within seconds without interrupting filtration process
- economic filter cleaning due to low consumption of backwashing water
- integrated rinsing water connection according to DIN 1988

Multipur M 50 – 150 MANUAL BACKWASH FILTER

Filter complete with red brass housing, filter and backwashing elements, flange connection PN 10 according to DIN 2501, part 1 (counter flanges built in on site), with stainless steel filter element 100 µm.

Technical specifications: Nominal pressure PN 10, operating pressure min./max. 2.5/10 bar (36/145 psi), water/ambient temperature max. 30/40 °C (86/104 °F).

Type Multipur		50 M NLL*	65 M	80 M	100 M
DVGW		Yes			
Nominal connection width	DN	50	65	80	100
Nominal pressure	PN (psi)	10 (145)			
Flow rate at Δp 0.2 bar/0.5 bar Δp 2.9 Psi/7.3 psi	m ³ /h gpm	20/32 88.1/140.9	35/58.0 154.1/255.4	35/58.0 154.1/255.4	56/82 246.6/361
Operating pressure, min./max.	bar	2.5/10			
Operating pressure, min./max.	psi	36/145			
Length	mm	220			
Total height	mm	600	600	600	660
Order no.	type 100 µm	10449	10185	10186	10562
Order no.	type 200 µm	-	10187	10188	-

* NLL: **No Lead Leach** Characteristics of red brass in NLL quality are corrosion-resistance smooth surface and minimal lead release after commissioning

Type Multipur		125 M	150 M
DVGW		-	
Nominal connection width	DN	125	150
Nominal pressure	PN (psi)	10 (145)	
Flow rate at Δp 0.2 bar/0.5 bar Δp 2.9 Psi/7.3 psi	m ³ /h gpm	57/91 251/400.7	61/105 268.6/462.3
Operating pressure, min./max.	bar	2.5/10	
Operating pressure, min./max.	psi	36/145	
Length	mm	220	
Total height	mm	740	740
Order no.	type 100 µm	10563	10564

Multipur AP 65 – 150 AUTOMATIC BACKWASH FILTER

Filter complete with red brass housing, filter and backwashing elements, flange connection PN 10 according to DIN 2501, part 1 (counter flanges built in on site), with stainless steel filter element 100 µm.

Backwashing is executed automatically and electronically controlled. The process is differential pressure controlled with time priority. Optical operation and fault indication, transformer plug with safe 12 V low voltage and possibility of manual rinsing. Fault signal (potential-free contact) for building management system available. No additional differential manometer necessary.

Technical specifications: Nominal pressure PN 10, operating pressure pure water side min.- max. 2.5 bar (36 psi) – 10 bar (145 psi), water/ambient temperature min./max. 5–30/5–40 °C (86/104 °F).

Type Multipur		65 AP	80 AP	100 AP
DVGW			Yes	
Nominal connection width	DN	65	80	100
Nominal pressure	bar (psi)	PN 10 (145)	PN 10 (145)	PN 10 (145)
Flow rate at Δp 0.2 bar/0.5 bar Δp 2.9 Psi/7.3 psi	m ³ /h gpm	35/58 154.1/255.4	35/58 154.1/255.4	56/82 246.6/361
Operating pressure, min./max.	bar		2.5/10	
Operating pressure, min./max.	psi		36/145	
Length	mm		220	
Total height	mm	630	630	680
Order no.	type 100 µm	10181	10182	10565
Order no.	type 200 µm	10183	10184	-

Type Multipur		125 AP	150 AP
DVGW			-
Nominal connection width	DN	125	150
Nominal pressure	PN (psi)	10 (145)	10 (145)
Flow rate at Δp 0.2 bar/0.5 bar Δp 2.9 Psi/7.3 psi	m ³ /h gpm	57/91 251/400,66	61/105 268,6/462,3
Operating pressure, min./max.	bar		2.5/10
Operating pressure, min./max.	psi		36/145
Length	mm		220
Total height	mm	770	770
Order no.	type 100 µm	10566	10567

Filter elements

Description	Order no.
Filter element Multipur 50 µm DN 50/65/80	2-243860
Filter element Multipur 100 µm DN 50/65/80	2-060626
Filter element Multipur 200 µm DN 50/65/80	2-060627
FFilter element Multipur 50 µm DN100	2-061174
Filter element Multipur 100 µm DN100	2-061147
Filter element Multipur 200 µm DN100	2-061173
Filter element Multipur 50 µm DN125/150	2-061176
Filter element Multipur 100 µm DN125/150	2-061148
Filter element Multipur 200 µm DN125/150	2-061175

SPECIAL ACCESSORY

Differential pressure manometer FOR TYPE MULTIPUR

For connection of optical and/or acoustical remote control built on site. Overpressure proof up to 25 bar (363 psi) with 2 adjustable micro-switches and electric contact switches (potential-free), including 2 shut-off valves and connection equipment.

Type
Order no. 10989



MULTIPUR AP 65/80/100



MULTIPUR AP 125/150



DIFFERENTIAL PRESSURE
MANOMETER

CONNECTION / INSTALLATION EQUIPMENT

FOR QUICK AND EASY INSTALLATION

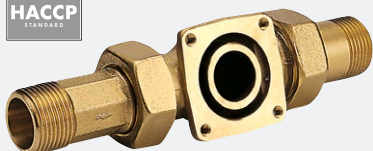




CONNECTION MODULE



CONNECTION MODULE DR



CONNECTION PIECE BASIC



CONNECTION PIECE HWS

Connection module

For the rapid connection of water treatment units such as filters, softeners and dosing units. Can be installed horizontally or vertically. Top quality brass part, seal, union nut, locking ring, connecting union, nominal pressure PN 16.

Type		¾"	1"	1 ¼"
Nominal pressure	bar (psi)	16 (232)	16 (232)	16 (232)
Installation length incl. screw connection	mm	210	210	238
Installation length without screw connection	mm	122	122	142
Order no.		10866	10874	10868

Connection module DR / HWS

If you want a filter with pressure reducer, select the connection module DR/HWS sound-proofed with integrated pressure reducer and pressure gauge. For rapid connection. The connection module DR can be installed vertically or horizontally. High-quality brass head connection equipment with spring, seal, cap nut, locking ring and connection unions.

Type		¾"	1"	1 ¼"
Nominal pressure	bar (psi)	16 (232)	16 (232)	16 (232)
Installation length incl. screw connection	mm	210	210	238
Installation length without screw connection	mm	122	122	142
Order no.		20860	20862	20861

Connection piece basic

For connection the filter unit Infinity size 2. The 4-hole connection piece can be mounted horizontally or vertically. High quality brass fitting with 4 screws, seals and connection threads.

Type		1 ½"	2"
Nominal pressure	bar (psi)	16 (232)	16 (232)
Installation length incl. screw connection	mm	240	260
Installation length without screw connection	mm	125	125
Order no.		50961	50962

Connection piece HWS

For connection the filter unit Infinity size 2. The 4-hole connection piece can be mounted horizontally or vertically. High quality brass fitting with 4 screws, seals and connection threads. The connection piece HWS also includes an integrated pressure reducer, pressure gauge and non-return valve.

Type		1 ½"	2"
Nominal connection width	DN	40	50
Nominal pressure	bar (psi)	16 (232)	16 (232)
Installation length incl. screw connection	mm	295	260
Installation length without screw connection	mm	125	125
Order no.		50954	50955

Basic module

The basic module helps with the rapid connection of e.g. filters, AQA total, softeners, dosing devices. The cover HM closes the basic module when a device is not fitted straight away. The basic module can be installed vertically or horizontally.

Type		1" (DN 25)	1 1/4" (DN 32)
Installation length	mm	122	122
Thread of the union nut		1 1/4"	1 1/2"
External thread		1 1/4"	1 1/2"
Order no.		30002	30058

DR module

PRESSURE REDUCER MODULE WITH GAUGE

The DR module helps with the rapid connection of the protective filter, automatic and manual backwash filter. If a filter is not fitted immediately, the DR module is closed using a cover. The DR module can be installed vertically or horizontally.

Type		1" (DN 25)	1 1/4" (DN 32)
Installation length	mm	122	122
Thread of the union nut		1 1/4"	1 1/2"
External thread		1 1/4"	1 1/2"
Order no.		30004	30060

HM double connection

The HydroModul double connection of two water treatment devices on one connection module or connection module DR. The HM double connection is used when a lack of space prevents the assembly of a second connection module.

Type	
Order no.	30063

HM cover

For closing the basic or DR module until a device is fitted.

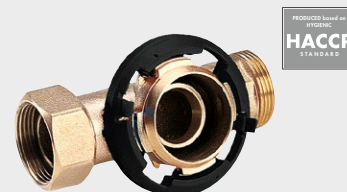
Type	
Order no.	30996

HM module

CLAMP WITH SCREW

For rapid and secure fastening of the HydroModul onto the wall.

Type	1"	1 1/4"
Order no.	30980	30960



BASIC MODULE



PRESSURE REDUCER MODULE



HM DOUBLE CONNECTION



HM COVER



HM MODULE CLAMP

Note: Hazard Analysis Critical Control Points (HACCP) is a management system in which food safety is addressed through the analysis and control of biological, chemical, and physical hazards from raw material production, procurement and handling, to manufacturing, distribution and consumption of the finished product.

BWT D1 Pressure Reducer

New

MASTER OF ALL CLASSES



**D1 RED
STANDARD**



**D1 INOX
HIGHEND**



**D1 ECO
ECONOMY**

Save water and money

Powerful, intelligent and quiet as a whisper, it reduces pressure and water consumption. The D1 impresses with a complete range, its hightech materials, innovative design, connection to the BWT App with water-saving calculator and 100 % reliable product quality.



1 MASTERPIECE

- Highest flow rate and perfect pressure control due to patented Venturi effect
- Flow optimisation and nozzle grading lead to unique **Kvs value of 9.3 m³/h** (DN25) (known products provide only up to 5.8 m³/h)
- Robust design icon, up to 50 % heavier than comparable products (weight D1 Red DN25: 1.7 kg vs. competitors 1.14 to 1.4 kg)
- Up to 16 or 25 bar inlet pressure



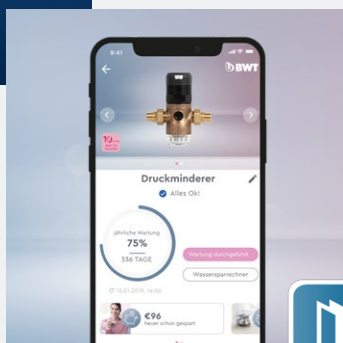
2 FULL RANGE

- 3-metal materials: brass UBA – red brass lead free – stainless steel
- High-quality plastic derived from medical technology
- 40 °C cold or hot water up to 85 °C
- Dimension ½" to 2"
- Common lengths for easy exchange
- Full range of spare parts available (75 components)



3 INSTANT HYGIENE

- Reminder service in the BWT App for annual maintenance
- Easily monitored via transparent filter screen cup
- Stainless steel screen 160 µm – easy to exchange in a few simple steps
- No need to dismantle the spring housing
- Saves time and money during operation



4 APP FOR SAVING WATER AND MONEY

- Best Water Home App with setting aid to optimize the domestic water pressure and to reduce costs
- The water saving calculator shows your customers how much money can be saved
- The target pressure value is set and adjusted in just a few simple steps and without any tools

BWT D1 Pressure Reducer

BWT D1 protects domestic water systems from excessive supply pressure in accordance with DIN EN 806-2 and DIN 1988-200 and thus helps, to

- avoid pressure-related damage
- reduce water consumption
- ensure sound insulation

A wide range of products, including the spare parts, are available from the start. So, the BWT D1 can be used perfectly for private, industrial and commercial applications.

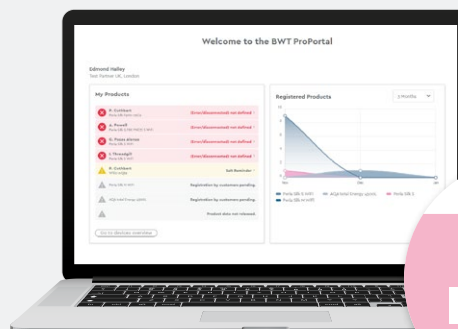
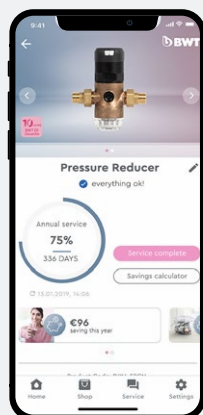


- 100 mm in 1"...
- common installation length in all dimensions
 - easy to exchange during maintenance

Ingenious Product Range - Modular System

	BWT D1 Eco		BWT D1 Red		BWT D1 Inox	
Type	D1 Eco 40.16	D1 Eco 85.25	D1 Red 40.16	D1 Red 85.25	D1 Inox 40.16	D1 Inox 85.25
Temperature range	Cold water up to 40 °C	Warm water up to 85 °C	Cold water up to 40 °C	Warm water up to 85 °C	Cold water up to 40 °C	Warm water up to 85 °C
Upstream-pressure Downstream-pressure adjustable	16 bar 1.5-7 bar	25 bar 1.5-7 bar	16 bar 1.5-7 bar	25 bar 1.5-7 bar	16 bar 1.5-7 bar	25 bar 1.5-7 bar
Housing material	Brass acc. UBA Positive-List*		Red Brass lead-free acc. UBA Positive-List*		Stainless steel 1.4408	
Filter sieve cup material	High-quality plastic	Brass UBA	High-quality plastic E1 HydroMODUL Size I	Red brass lead free	High-quality plastic E1 HydroMODUL Size I	Stainless steel
Dimension, Specification	DN 15-DN 25 Valve insert, spring housing, sieve + filter cup in uniform size I			DN 15-DN 50 Valve insert, spring housing, sieve + filter cup in 3 sizes: I - 1½", II - 1" and ¾", III - ¾" and 2"		

* Guidelines of evaluation for metal materials in contact with drinking water (Federal Environment Agency Germany)



D1 – Master of all Classes

D1 Eco – Economy and More

Order no.	Description	length without/with screw connection in mm
125300271	BWT D1 Eco ½" 40.16	80/136
125300272	BWT D1 Eco ¾" 40.16	90/152
125300273	BWT D1 Eco 1" 40.16	100/170
125300274	BWT D1 Eco ½" 85.25	80/136
125300275	BWT D1 Eco ¾" 85.25	90/152
125300276	BWT D1 Eco 1" 85.25	100/170

D1 Red – Standard with all Extras

Order no.	Description	length without/with screw connection in mm
125300277	BWT D1 Red ½" 40.16	80/136
125300278	BWT D1 Red ¾" 40.16	90/152
125300279	BWT D1 Red 1" 40.16	100/170
125300280	BWT D1 Red ¾" 40.16	105/191
125300281	BWT D1 Red ¾" 40.16	130/220
125300282	BWT D1 Red 2" 40.16	140/254
125300283	BWT D1 Red ½" 85.25	80/136
125300284	BWT D1 Red ¾" 85.25	90/152
125300285	BWT D1 Red 1" 85.25	100/170
125300286	BWT D1 Red ¾" 85.25	105/191
125300287	BWT D1 Red ¾" 85.25	130/220
125300288	BWT D1 Red 2" 85.25	140/254

D1 Inox – High-end without Compromises

Order no.	Description	length without/with screw connection in mm
125300289	BWT D1 Inox ½" 40.16	80/140
125300290	BWT D1 Inox ¾" 40.16	90/160
125300291	BWT D1 Inox 1" 40.16	100/180
125300292	BWT D1 Inox ¾" 40.16	105/200
125300293	BWT D1 Inox ¾" 40.16	130/225
125300294	BWT D1 Inox 2" 40.16	140/255
125300295	BWT D1 Inox ½" 85.25	80/140
125300296	BWT D1 Inox ¾" 85.25	90/160
125300297	BWT D1 Inox 1" 85.25	100/180
125300298	BWT D1 Inox ¾" 85.25	105/200
125300299	BWT D1 Inox ¾" 85.25	130/225
125300300	BWT D1 Inox 2" 85.25	140/255



The investment in a new D1 pressure reducer is worthwhile! Without tools and in just a few simple steps, the target value is set on the pressure reducer – it's so easy to save water and money!

Subject to alterations and errors excepted



D1 ECO

- Compact product range: ½"-1"
- Performance-based control
- Replaces common brass models



D1 RED

- Full range up to 2"
- Powerful with reserves
- Modern red brass material



D1 INOX

- Full range up to 2"
- Powerful with reserves
- Best material: stainless steel

BWT FRESH WATER

MULTI-LAYER FILTRATION IN TECHNICAL PERFECTION



A smiling man with a beard and short dark hair is leaning over a white sink, washing his hands. He is wearing a white towel draped over his shoulder. The faucet is a modern, chrome, cylindrical design. The background is a bright, clean bathroom with a window showing a view of a building.

BWT Multis

THE EXPERTS FOR
SPECIAL CASES

Enjoy hygienic water without any contaminants – day by day ...

When washing hands and face, showering, brushing teeth, for cleaning and cooking, etc. – with BWT Multi products you get reliable protection against common water pollutants s.a. bacteria, odors, bad smell, chlorine, particles, heavy metals, and even arsenic. The composition of filter layers, combined

with proven media, ensures perfectly pure water from every single tap. And the best – it's a natural, chemical-free process! Installing a BWT Multi is a lifetime investment that pays off – for more well-being of the entire family!

Five Types of specialists

DEALING WITH VARIOUS CHALLENGES OF WATER

Type	1000	2000	3000	7000	Intended Use	Filter Media
Multi C	■	■	■	■	Removal of dirt particles, chlorine, toxic chlorination by products, bad taste, colour, smell, organics and dirt particles	Bewasorb K 111
Multi S	-	■	■	-	Removal of dirt particles, chlorine, bad taste, colour, smell, organics, iron and manganese	Bewasorb K111 Bewasorb IXC Minox S Filter element ACF
Multi AS	-	■	■	-	Removal of arsenic, chlorine, colour, smell, organics and particles	Bewasorb K111 Bewasorb ASR
Multi HM	-	■	■	-	Removal of heavy metals, lead, copper, nickel, chlorine, colour, smell, organics and particles	Bewasorb K111 Bewasorb IXN

BWT filter materials for water treatment

MEETING THE HIGHEST STANDARDS.
TESTED UNDER THE TOUGHEST CONDITIONS.
PROVEN BY MANY YEARS OF OPERATION

- Highest media purity compliant with the strict standards of the German DIN
- High process safety and reliable results over their complete period of use
- Great material resistance that ensures perfect filtering results without adding substances to the water
- Reliable and proven quality 'Made in Germany'



BEWASORB K 111





MULTI C

- Proven process know-how condensed into a domestic filter system
- High quality filter media Bewasorb K111
- Automatic volume controlled backwash



MULTI S

- Proven process know-how condensed into a domestic filter system
- High quality multi media filtration system
- Filter media: Bewasorb K111, Minox, filter element ACF Bewasorb IXC

Multi C

HIGH EFFICIENCY REMOVAL OF CHLORINE

The BWT Multi series offer the unmatched BWT quality standards, high removal efficiency, active monitoring and automatically controlled cleaning cycle, while offering a compact design and user-friendly operation. Effectively removes chlorine, contaminants, sediments, suspended solids and other pollutants. Filter for the removal of dirt particles, colour, bad odour and tastes, such as chlorine compounds etc. Additional removal of iron. Clean water from the first litre onwards. Automatic volume controlled efficient backwash.

Technical specifications: Nominal pressure 10 bar (145 psi), operating pressure 2–8 bar (29–116 psi), water-/ambient temperature, max. 30/40 °C (86/104 °F), electrical connection 230 V/50 Hz, unit voltage 18 V.

Type Multi-layer filter C		1000	2000	3000	7000
Nominal connection width	DN	32 (1 1/4 ")			
Max. flow rate	m³/h (gpm)	1.0 (8.8)	2.0 (8.8)	3.0 (13.2)	5.0 (22.0)
Nominal flow rate	m³/h (gpm)	0.6 (4.4)	1.0 (4.4)	1.5 (6.6)	2.5 (11.0)
Operating pressure	bar/ psi	2–8 / 29–116			
Capacity	l	1000	1800	2400	6400
Height	mm	625	1080	1280	1820
Order no.		13912	13921	13922	13901

For Multi C we offer this replacement kit also- containing support gravel plus Bewasorb K111.

Refill Multi C

Order no.	10863	2-060966	2-060967	2-061060
------------------	--------------	-----------------	-----------------	-----------------

Multi S

REMOVAL OF DIRT PARTICLES, CHLORINE & IRON/MANGANESE

Provide reliable protection against dirt particles in the water. They remove dirt sediments and substances from water, contaminants such as iron (up to 1 ppm) and manganese, as well as turbidity, colouring and unpleasant odours and taste e.g. chlorine.

Technical specifications: Nominal pressure 10 bar (145 psi), operating pressure 2–8 bar (29–116 psi), water-/ambient temperature, max 30/40 °C (86/104 °F), electrical connection 230 V/50 Hz, unit voltage 18 V.

Type Multi-layer filter S		2000	3000
Nominal connection width	DN	32 (1 1/4 ")	
Max. flow rate	m³/h (gpm)	2.0 (8.8)	3.0 (13.2)
Nominal flow rate	m³/h (gpm)	1.0 (4.4)	1.5 (6.6)
Operating pressure	bar/ psi	2–8 / 29–116	
Capacity	l	1800	2400
Height	mm	1080	1280
Order no.		13919	13920

For Replacement, activated carbon filter element (ACF) and/or re-filling filter material is available. Regarding filling material, BWT offers special replacement kits containing all different filter media's in the exactly quantity you will need to refill Multi S2000 and Multi S3000. Each kit contains in detail these filter media: a) support gravel, b) Minox and c) multi filter media. We would strongly recommend to replace via replacement kit and filter element.

Refill Multi S

	2000	3000
Order no.	2-307096 + 6-630049	2-307097+6-630042
Filter element ACF	2000	3000
Order no.	2-060926	2-060927



INSTALLATION EXAMPLE
WITH MULTI C

Multi AS

HIGH EFFICIENCY REMOVAL OF ARSENIC

The Multi series offer the unmatched BWT quality standards, high removal efficiency, active automatic volume controlled filter with arsenic removal media – Bewasorb ASR. Line extension of the successful Multi-Filter range by a further multitasking. The BWT Multi AS removes arsenic, chlorine, colour, smell, organics and particles

Technical specifications: Nominal pressure 10 bar (145 psi), operating pressure 2–8 bar (29–116 psi), water-/ambient temperature, max 30/40 °C (86/104 °F), electrical connection 230 V/50 Hz, unit voltage 18 V.

Type Multi-layer filter AS		2000	3000
Nominal connection width	DN	32 (1 ¼ ")	
Max. flow rate	m³/h (gpm)	2.0 (8.8)	3.0 (13.2)
Nominal flow rate	m³/h (gpm)	1.0 (4.4)	1.5 (6.6)
Operating pressure	bar/ psi	2–8 / 29–116	
Arsenic removal Capacity	mg	40,000	60,000
Height	mm	1080	1280
Order no.		13887	13886

Regarding filling material, BWT offers special replacement kits containing all different filter media's in the exactly quantity you will need to refill Multi AS 2000 and Multi AS 3000. Each kit contains in detail these filter media:

a) support gravel, b) Bewasorb K111 c) Bewasorb ASR filter media.

We would strongly recommend to replace via replacement kit.

Refill Multi AS

Order no.	2-061155	2-061156
------------------	-----------------	-----------------

Multi HM

HIGH EFFICIENCY HEAVY METAL REMOVAL

The HM series filters, a new BWT product for reliable removal of heavy metals (e.g. copper, nickel and lead), chlorine, colour, smell and organics. Highest BWT quality standards in combination with our new filter Media Bewasorb IXN. The filters are not suitable for oils, grease, solvents, soaps and other lubricating media.. These units are the perfect supplement to complete the BWT Multi Series.

Technical specifications: Nominal pressure 10 bar (145 psi), operating pressure 2–8 bar (29–116 psi) water-/ambient temperature, max. 30/40 °C (86/104 °F) electrical connection 230 V/50 Hz, unit voltage 18 V.

Type Multi-layer filter HM		2000	3000
Nominal connection width	DN	32 (1 ¼ ")	
Max. flow rate	m³/h (gpm)	2.0 (8.8)	3.0 (13.2)
Nominal flow rate	m³/h (gpm)	1.0 (4.4)	1.5 (6.6)
Operating pressure	bar/ psi	2–8 / 29–116	
Heavy metal removal Capacity	mg	50,000	75,000
Height	mm	1080	1280
Order no.		13885	13884

Regarding filter material, BWT offers special replacement kits containing all different filter media's in the exactly quantity you will need to refill Multi HM 2000 and 3000. Each kit contains in detail this filter media:

a) support gravel b) Bewasorb K111 c) Bewasorb IXN

We would strongly recommend to replace via replacement kit.

Refill Multi HM

Order no.	2-061209	2-061210
------------------	-----------------	-----------------

Please note, we strongly recommend to order for all Multi-layer filters this connection equipment separately: connection set DN 32/32 and Multiblock X.



MULTI AS

- Multi AS – the range extension of the successful Multi family
- High efficient arsenic removal
- Filter Media Bewasorb ASR, Bewasorb K111



MULTI HM

- Multi HM – line extension of successful BWT Multi family
- High efficiency heavy metal removal
- Filter Media Bewasorb IXN, Bewasorb K111

Bewamat COMB/PRO

MULTI-TARGET FILTERS



The BWT well water specialists!

You live too far away from a municipal pipeline or you prefer your own borehole supply? Then, better check twice your water quality and consider a water treatment process with our latest innovations BEWAMAT COMB/PRO. The ideal solution for requirements of an independent water supply – e.g., an isolated farm, a winery or private holiday home.

Every homeowner knows the common problems with well water – mostly brown/ orange stains due to high loads of iron and/or black scale because of manganese. The new Multi-target filters are dealing with hardest conditions of well water and are especially developed for safely removal of:

- **IRON**

reduces iron concentrations: dissolved, oxidised, organic and colloidal.
The concentration of iron should not exceed 10 ppm..

- **MANGANESE**

Extremely reliable filter media for reducing manganese. The concentration of manganese in the purified water should not exceed 3 ppm.

- **ORGANIC MATTER - BAD SMELL AND TASTE**

effectively reduces colour, tannins, and chemical oxygen demand.
Maximum allowed influent COD is O₂ (80 ppm KMnO₄).

- **AMMONIUM**

Concentration of ammonium in purified water should not exceed 2 ppm.

- **HARDNESS**

softens water with hardness of up to 30°dH (535 ppm CaCO₃).

Protect your sanitary fittings and entire house installation. It's a worth investment.

BEWAMAT COMB/PRO

Multi-target filter*	Type	COMB 1	PRO 1
Nominal connection width	DN	32 to 20	
Nominal capacity in accordance with DIN EN 14743	m³/h (mol)	50 (8.9)	42.5 (7.6)
Peak flow with closed blending	m³/h	1.2	
Nominal flow	m³/h	1.6	
Operating pressure	bar	2.5 – 8	
Regenerative consumption per 100% regeneration, approx.	kg	2.5 – 4	
Dimensions W x H x D	mm	390 × 1090 × 750	
Connection height of water inlet	mm	960	
Connection height of water outlet	mm	960	
Connection height of overflow	mm	650	
Sewage system connection	DN	50	
Shipping weight, approx.	kg	55	
Operating weight, approx.	kg	120	
Order no.		11028	11039

*) To ensure an efficient and long-lasting operation of the system, we strongly recommend to install BWT ESSENTIALS and check via local water analysis.



*Well Water Treatment -
for an optimum level of safety*




BEWAMAT COMB/PRO

- Multi-target filtration including softening, 4 in 1 unit for multiple water problems
- Patented filter media by BWT
- Regeneration with BWT standard salt
- Fully automatic operation
- Easy connection via Multiblock X

BWT PEARL WATER

INDULGE IN SILKY-SOFT BWT PEARL WATER





BWT Pearl Water Systems

BEAUTY STARTS WITH WATER

Silky-soft Pearl Water transforms your home into a wellness oasis

This is a modern symbiosis of functional limescale protection and a modern design with a real sensual quality – for the skin and the eyes. Soft water pampers you, it feels pleasantly soft on the skin. Every shower, every bath becomes a real pleasure. Soft water is also

gentle to everything it touches: Laundry washed in soft water feels fresh, clean and soft. Towels become cuddly, soft and fluffy. Cutlery and crockery are given a real shine. It is a striking design which catches the eye.

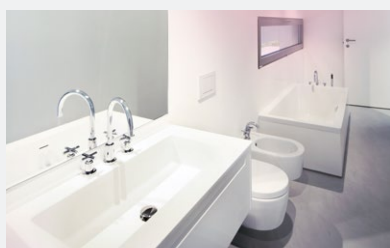
Advantages at a glance

- **SAFELY PROTECT:** Pipes and, therefore, fittings, tiles, household appliances, kettles and boilers are effectively protected against limescale. This means lower energy consumption, a longer life span and long-lasting shine.
- **PRESERVE VALUE:** Less limescale is deposited in pipes so shower walls and other installations shine brightly for longer.
- **LOWER COSTS:** Reduced energy costs and less expenditure for washing detergents and cleaning agents relieves your household budget – and our environment.
- **SAVE TIME:** Cleaning takes considerably less time.
- **SIMPLY FEEL GOOD:** Silky smooth pearl water ensures soft skin, shiny hair and fluffy soft laundry.



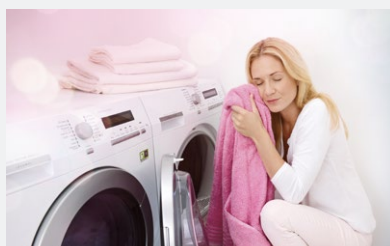
1 FOR INCREASED WELLBEING

Imagine turning on the tap and a gentle stream of silky-soft BWT Pearl Water pours forth, stroking your hand, feeling pleasantly soft. Every shower and bath becomes a wellness experience – with shiny hair and tender skin. BWT water softening systems will enhance your feeling of wellbeing in the bathroom.



2 TO PROTECT YOUR BATHROOM AND KITCHEN

Limescale deposits on shower walls, tiles and fittings are not only unsightly, but also shorten their service life. Silky-soft BWT Pearl Water can prevent this and help maintain the value of your investment. The build-up of limescale also affects the entire water system with expensive consequences.



3 FOR FLUFFY, CUDDLY LAUNDRY

Your weekly washes will become softer with silky-soft BWT Pearl Water – you can feel the difference. Softened water is kinder to your laundry, fabrics feel softer and colours last longer. Also less soap and detergents is needed – a benefit for sensitive babies or mature skin.

The next generation of water softeners



BWT PERLA

A new era with one goal: 100 % customer satisfaction

The **BWT perla** model series represent the latest generation of BWT pearl water systems and combines high-quality water treatment with modern communication. Every single detail of the products and their operation

have been optimised in order to provide outstanding results – discover the next level of protection, safety and comfort.



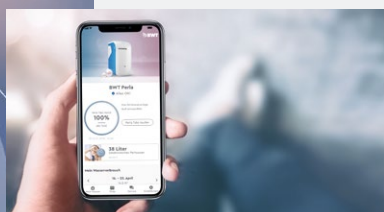
1 DVGW CERTIFIED PRODUCTS

You can find latest information on the certified BWT products under following link – directly on the DVGW homepage:
<http://dvgw-cert.com/>



2 SOPHISTICATED TECHNOLOGY

Top products of the BWT Perla range almost control themselves. The integrated touch display shows all relevant information and you can easily read off system data, control function parameters and various checklists help with operation.



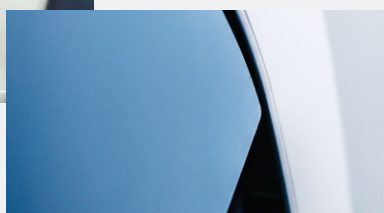
3 BWT BEST WATER HOME APP

Get connected – the app as your personal water assistant for BWT Perla and many other products. Discover a new era of customer satisfaction with added value in terms of safety, information and convenience.



4 AQA SAFE/WATCH/GUARD/STOP

Perfect water hygiene at all times and hygienic operation with IoClean, thermal insulation and other features.



5 FLAWLESS DESIGN

Perfect in every detail – ergonomic design, shining high-end surfaces and compact dimensions. One brilliant shape for the entire range.



6 MULTIPLE AWARDS

In 2018, BWT Perla was recognised for its innovative design, high functionality and ease of use. In 2019, BWT won the PLUS X AWARD for the highest level of customer satisfaction in water technology.



7 ILLUMINATED COMMUNICATION

The illuminated BWT water drop shows the system status of BWT Perla in different colors – via a sensor when walking by. If the drop is blue, everything is fine. If it's yellow or red, you can find out more on the touch display or via app.

Safety-PLUS Package

BWT PERLA RANGE MONITORS ITSELF & THE INSTALLATION



Protection against water damage

Tap water damage is increasing from year to year. More than every second household has already been affected. The consequences are incalculable. While financial damage can at least be replaced at great expense, some memories are irreplaceable if in the worst case they sink into your cellar.

The BWT model range comes with four sophisticated leakage protection systems free of charge to protect your home from emergencies and their unpleasant consequences.



BWT Best Water Home





1 AUTOCHECK

System check of the core components every 2 months. Automatic check and error message in case of malfunction: water meter, brine meter and electronic components.

2 STATUS INDICATOR

On the unit and online. Status display lights up red in the event of faults and yellow in the event of warnings, e.g. low salt level. A push message will be send from the app.

3 AQA WATCH

Monitors the water supply of the domestic water network and issues a warning message in case of permanently low volume flows of < 60 l/h over a period of >10 minutes. Optionally selectable on the unit.

4 AQA SAFE FUNCTION

Avoidance of water damage due to rinse water in the event of a power failure. Particularly important when using rinse water lifting pump. In the event of a power failure, the rinse water valve closes, control valves remain in the respective operating position and programmed parameters are permanently stored.

5 AQA STOP*

Control valves and motor blending valve close, shut off the water installation in the direction of flow downstream of the BWT Perla, and provide safety with wired floor sensor.

6 AQA STOP LITER

Provides safety through water quantity monitoring and limitation. Factory setting is 9,999 litres. Programmable to water volume to be determined on site with uninterrupted flow – a perfect holiday mode.

BWT Perla model line

AT A GLANCE



ADDED VALUE
THROUGH ONLINE
ACTIVATION



Device type	BWT Perla seta the luxurious one	BWT Perla high performer	BWT Perla home the practical one	BWT Perla one the clever one
Nominal capacity according to DIN EN 14743 (m³x°dH)	2 × 18	2 × 6,2	9–18	9–18
Nominal flow rate at Δp 1 bar DIN EN 14743 (m³/h)	3,0	3,2	1,7	1,7
Multitouch display	5"	5"	5"	3,5"
Safety overflow	410 mm	410 mm	410 mm	410 mm
Blending valve	Motor intersection	Motor intersection	Motor intersection	Manual
GSM data card	✓	✓	✓	-
LAN-WLAN connection	✓	✓	✓	✓
Device status display (BWT drop)	✓	✓	✓	✓
Proximity sensor	✓	✓	✓	-
AQA Watch function	✓	✓	✓	✓
AQA Safe valve	✓	✓	✓	✓
AQA Stop function	✓	✓	✓	optional
AQA Guard Wireless Function	optional	optional	optional	optional
Mineral dosing device Bewados	optional	optional	optional	optional
Recommendations for use	For highest demand and demand (comfort installations, rain showers, etc.), 24 h pearl water guarantee, highest safety standard, high water hardness and continuous flow rates.	For modern comfort installation (rain shower and more), 24 h pearl water guarantee, highest safety standard.	For functional, modern installation (e.g. water-saving systems), highest safety standard	For functional, modern installation (e.g. with water-saving systems), esp. also use in front of water heater

Order no.

11601

11424

11431

11433

*One housing unit (HS) is equal to 2 persons.

Page

56

56

57

57

BWT standard equipment

SCOPE OF DELIVERY

When you buy one of our devices from a specialist company, it is of course already equipped with a comprehensive set of accessories, which makes immediate standard installation and commissioning by the specialist installer extremely easy.

In addition, the range of accessories specially adapted to our products offers the possibility of responding to individual installation situations. This means you are always on the safe side, especially when it comes to maintenance and care of your BWT products.

Example BWT Perla

Optional accessories



Accessories included





BWT PERLA H

- Protection against leakage with AQA Stop, AQA Watch and AQA Safe valve
- up to 10 AQA Guard Wireless water sensors (optional)
- Motor blending valve
- Sensor + illuminated logo as status indicator
- Connectivity with the BWT Best Water Home App



BWT PERLA SETA

- Protection against leakage with AQA Stop, AQA Watch and AQA Safe valve
- up to 10 AQA Guard Wireless water sensors (optional)
- Motor blending valve
- Sensor + illuminated logo as status indicator
- Connectivity with the BWT Best Water Home App

BWT Perla – the high performer

THE INNOVATIVE DUPLEX SYSTEM FOR MAXIMUM UNINTERRUPTED PEARL WATER ENJOYMENT

BWT Perla – developed for all those who shun any compromise. Two columns with ex-changer medium ensure silky-soft BWT Pearl Water around the clock as well as maximum peak water flow. When the exchanger medium in one column is exhausted, the other one automatically steps into action. You thus enjoy silky-soft BWT Pearl Water 24 hours a day, 7 days a week without interruption. Thanks to its adaptive parallel operation, BWT Perla also achieves the maximum peak water flow of up to 53 litres a minute. Thus, silky-soft BWT Pearl Water is always available in the home even when it is running from several taps at the same time or modern comfort showers are being used.

BWT Perla	Unit	Type
Nominal connection width	DN	32 (M 1 1/4")
Flow according to EN 14743	m³/h	3,2
DVGW		YES
Salt consumption per 100 % regeneration, approx.	kg	0,76
Rinsing water per 100 % regeneration, approx.	l	40
Dimensions (H x W x D)	mm	798 x 395 x 505
Order no.		11424

BWT Perla seta – the luxurious one

THE LUXURY DUPLEX SYSTEM WITH EXTENDED CAPACITY FOR PEARL WATER IN ABUNDANCE.

BWT Perla seta – Pool filling, splash shower, rainwater shower – there are no limits to modern house installations with BWT Perla seta. Almost double the quantity of exchange medium in the two columns of the duplex system always ensure 24 hours of Pearl Water, no matter how high your current water consumption is. The operating mode of the BWT Perla seta is dependent on the applicable consumption, in accordance with the amount of water you need over a day. The water flows adaptively and in parallel through the two columns – this enables maximum availability of Pearl Water and a peak water flow of up to 50 litres per minute..

BWT Perla seta	Unit	Type
Nominal connection width	DN	32 (M 1 1/4")
Flow rate according to EN 14743	m³/h	3,2
DVGW		YES
Salt consumption per 100 % regeneration, approx.	kg	0,76
Rinse water per 100% regeneration, approx.	l	40
Dimensions (H x W x D)	mm	798 x 395 x 505
Order no.		11601

BWT Perla home – the practical one

THE COMPACT SIMPLEX SYSTEM WITH INTELLIGENT REGENERATION CONTROL

BWT Perla home – the practical solution for families with conventional water requirements. A column with exchanger medium produces up to 30 litres of silkysoft BWT Pearl Water per minute and cleans itself automatically during periods of low water consumption thanks to predictive regeneration control.

Once the exchanger material in the column is exhausted, it is regenerated with a small quantity of salt solution. During this time, only hard water is available to you. BWT Perla home, however, regenerates earlier and predictively, e.g. at night. BWT Perla home optimally adapts to your everyday habits, ensuring a high level of Pearl Water availability for you..

BWT Perla home	Unit	Type
Nominal connection width	DN	32 (M 1 ¼")
Flow rate according to EN 14743	m³/h	1,8
DVGW		registered
Salt consumption per 100 % regeneration, approx.	kg	0,76
Rinsing water per 100 % regeneration, approx.	l	40
Dimensions (H x W x D)	mm	798 × 395 × 505
Order no.		11431

BWT Perla one – the clever one

THE REFINED SIMPLEX SYSTEM WITH COMPACT 3.5" DISPLAY

BWT Perla one – the „little“ brother in the BWT Perla model line represents an inexpensive entry level into the world of Pearl Water. It saves on performance where this makes sense, but not on quality or convenience. BWT Perla one is designed for use in regions with „medium hard“ water with low requirements and in particular for installation upstream of the water heater.

While the BWT Perla one does not feature an AQA Stop function directly integrated in the device in order to shut off the domestic water supply, it can however trigger an alarm warning in the app and on the device via up to 10 AQA Guard Wireless sensors. The water must then either be shut off manually, or better: you can retrofit an independent AQA Stop module at a different location – directly at the domestic water inlet. If BWT Perla one is used only for softening the hot water – immediately upstream of the storage tank – a wellthought out system for protecting against leaks in the

entire home can be ensured.

BWT Perla one	Unit	Type
Nominal connection width	DN	32 (M 1 ¼")
Flow rate according to EN 14743	m³/h	1,8
DVGW		registered
Salt consumption per 100 % regeneration, approx.	kg	0,76
Rinsing water per 100 % regeneration, approx.	l	40
Dimensions (H x W x D)	mm	798 × 395 × 505
Order no.		11433




BWT PERLA HOME

- Protection from leaks with AQA Stop, AQA Watch and AQA Safe valve
- Up to 10 AQA Guard Wireless water sensors (optional)
- Motor blending valve
- Proximity sensor + illuminated logo as status indicator
- Ultrasonic sensor measures salt level



BWT PERLA ONE

- Intelligent regeneration by means of capacity sensing
- Protection against leakage with AQA Watch and AQA Safe valve
- Up to 10 AQA Guard Wireless water sensors (optional)
- Manual blending valve for water hardness adjustment



Bewamat 25A & 75A

THE RUGGED BEST PERFORMERS

Save money with soft water: Our high-performance units

Soft water enhances the cleaning power of washing and cleaning agents, thus saving you up to 50 % of the costs of soaps and detergents. That's a real load off the environment and your wallet. But you also save money when you heat up the water. When operated

with fossil fuels, a 2 mm thick limescale coating on heating surfaces increases energy consumption by 20 % and this of course shows up in the heating bill. Limescale deposits in electric boilers damage the heating elements and this results in high repair costs.

Convincing results

Bewamat 25A and 75A with efficient operation and supply your entire household with wonderfully soft water.

- Consumption-controlled with automatic disinfection
- Individually adjustable water hardness level – completely in line with your needs
- With intelligent automatic regeneration that adapts to your wishes
- The valves and electronic components offer you state-of-the-art technology – that you can only get from BWT, Europe's leading water treatment company
- Our products are developed in accordance with European quality and authorisation standards, which are the strictest in the world and exceed the usual international standards



BEWAMAT 25 A & 75 A



1 SOFT WATER IS THE NEW LUXURY

Today's bathrooms are often private Wellness temples as well as kitchens turning to 'luxury objects'. Home owners are spending enormous sums on exclusive brands and design products. Installing BWT products – working 24/7 as 'hidden champions' in the background can prevent and help to maintain value and your investments.



2 SEE - FEEL AND ENJOY THE DIFFERENCE

Silky-soft BWT Pearl Water cares for your sensitive skin and hair in a wonderfully gentle way, turning showering and bathing into a wellness experience. Your loved ones will feel the difference of softer laundry, long lasting colours and less detergents.



3 RELIABLE PROTECTION WITH SOFT WATER

Soft water also means reliable limescale protection for your complete pipework and all connected appliances. The service life of washing machines, dishwashers, coffee machines and kettles, as well as the maintenance intervals of aerators, are extended significantly.

Drinking water softeners

SELECTION TABLE

DOMESTIC TECHNOLOGY



Type of device	AQA perla XL	AQA life S	Bewamat 75A
Duplex-system	■	■	–
Operation mode	alternating	alternating	intelligent
DVGW certified	–	■	–
Special feature	safety PLUS package, touch screen, hygiene flushing	compact design	high capacity system
Accommodation units	4 – 8	1 – 2	3 – 4
Flow rate in m³/h (at 1 bar pressure drop) in accordance with EN 14743	1.60	1.80	1.80
Nominal capacity in accordance with EN 14743 m³x°dH (mol)	2 × 18 (2 × 3.2)	2 × 7 (2 × 1.1)	75 (13.4)
Salt consumption per regeneration	0.80 kg	0.25 kg	3.50 kg
Water consumption in L per regeneration at 4 bar water pressure liter	40	21	128
Height / Width / Depth (mm)	890 / 500 / 520	610 / 410 / 505	1090 / 390 / 560
Overflow connection height of overflow hose	580 mm	295 mm	650 mm
Max. supply of regenerative	50 kg	32 kg	50 kg
Precision mineralisation	■	■	–
Salt-reserve indicator	■	–	–
Solar module	□	□	□
Direct input for metering units	■	■	–
Efficiency operation	■	■	■
Multi info touch display	■	–	–
Installer integration	■	–	–
AQA safe valve	■	■	–
Filter service reminder	■	–	–
Easy to service	■	■	■
Order no.	11414	11349	11325
Page	62	63	64

*Non-binding guiding values

■ included □ optional – not available



Bewamat 25A

Aquadial softlife

BWT Perla silk

-	-	-
intelligent	intelligent	intelligent
-	-	-
economic solution	economic solution for small residential units	economic solution for small residential units
1 – 2	1 – 4	1 – 4
1.40	1.44/1.56/1.68	1.44/1.56/1.68
25 (4.5)	26 – 75 (4.6 – 13.4)	26 – 75 (4.6 – 13.4)
1.20 kg	1.5/2/3 kg	1.5/2/3 kg
55	85 – 145	85 – 145
640 / 390 / 560	526-808 / 276 / 470	526-808 / 276 / 470
280 mm		
15 kg	12/16/24 kg	12/16/24 kg
-	-	-
-	-	-
■	-	-
-	-	-
■	-	-
-	-	-
-	-	-
-	-	-
-	-	-
■	■	■
11324	11360/11361/11362	11020/11021/11022
64	65	66



BWT AQA PERLA XL

- Soft Control – the intelligent operating system
- Multi-info touch screen for more operating comfort
- Smart metering – keeping an eye on consumption
- Precision mineralisation for or cost-effective regeneration
- Lower energy requirement (electronic mains device)

AQA perla XL

FOR HIGH VOLUMES 24H/7DAYS

The AQA perla XL is developed for high flow operation and steadily high water consumptions. The system features a high capacity mode with an adapted salting rate for a significantly increased capacity – for steadily high water consumptions as seen in asian markets. Therefore, bigger resin bottles are used as in the standard model for an increased capacity.

The AQA perla XL is suitable for the softening of drinking and domestic water for the protection of water pipes and their fixtures and connection equipment, boilers, etc. against malfunctions and damage resulting from limescale deposits.

The AQA Perla XL is a duplex water softener based on the ion exchange principle. The system is operated with columns which permanently change at short intervals. On the one hand, this method ensures that soft water is also available during a regeneration process, while on the other hand the frequent column switches minimise stagnation times. Based on chemical and microbiological parameters, this method results in a significantly higher water quality than with conventional duplex softeners.

Regeneration is triggered based on the volume of water.

AQA perla- duplex softener with soft control touch screen and intelligent brine suction Following new features are available now:

- The intelligent operating system soft control 3
- Multi- Info touch screen for more convenient operation
- Screen saver with contact e.g. plumber's telephone numbers
- Smart metering – consumption levels always in view
- Aqua-Watch-Alarm function for untypical water consumption

- USB connection for transfer to your consumption data
- Precision mineralisation for economic regeneration
- Low energy requirements thanks to the electronic power supply unit

AQA Perla XL Duplex soft water system including

- 2 m rinsing water hose
- 2 m overrun hose 18 × 24
- AQUATEST hardness testing device

Technical specifications: Mains connection 230 V/50 Hz, nominal pressure PN 10, water / ambient temperature, max. 30/40 °C (86/104 °F).

Type AQA perla XL

DVGW		–
Nominal connection width	DN	32 (M 1 1/4")
Nominal flow rate in m ³ (at 1 bar pressure drop) in accordance with EN 14743	m ³	1.6
Nominal capacity according to EN 14743	m ³ x °d (mol)	2×18 (2×3,2)
Dimensions (H x W x D)	mm	890 × 500 × 520
Salt consumption per regeneration	kg	0.8
Order no.		11414

OPTIONAL CONNECTION EQUIPMENT

Multiblock X

Using the Multiblock X made of brass, the water flow to the softener or limescale protection unit remains uninterrupted. The water supply is maintained via an integrated bypass, so that maintenance work can be carried out without any problems.

Type Multiblock X

Order no.	30999
------------------	--------------

Connection set DN 32/32

For installation of BWT water softeners with nominal connection DN 32 to the Multiblock module consisting of: 2 flexible armoured hoses with formed angles and DN 32 cap nuts on both ends, TÜV tested, with 4 seals, 0.6 m.

Type Connection set

Order no.	11877
------------------	--------------

AQA life

COMPACT DUPLEX SOFTWATER UNIT

AQA life is a Duplex soft water unit for the smallest of spaces. AQA life operates with AQA perla technology, the heart of AQA life is the tried and -tested AQA perla valve. Regeneration takes place in continuous current. By doing this, relatively higher capacities can be achieved using less regeneration medium and the regeneration water requirement is also minimised.

The control of the operation and regeneration is carried out with the easy-to-operate electronic control Soft-Control. Thanks to innovative precision mineralisation with electronic meter, an exact brine admeasurement with a high degree of reproducibility is ensured. The internal hydraulic as well as the alternating operating mode allow high flow rates. Simultaneously, the alternating operating mode guarantees optimal levels of hygiene.

AQA life Duplex soft water system including

- DN 32/32 connection set
- 2 m rinsing water hose
- 2 m overrun hose 18 × 24
- AQUATEST hardness testing device
- incl. Multiblock X

Technical specifications: Mains power supply 230 V/50 Hz, nominal pressure PN 10, operating pressure 2.5–8 bar (36–116 psi), water-/ambient temperature max. 30/40 °C (86/104 °F)

Type AQA life		
DVGW		Yes
Nominal connection width	DN	32 (M 1 1/4")
Nominal flow rate in m ³ (at 1 bar pressure drop) in accordance with EN 14743	m ³	1.8
Nominal capacity according to EN 14743	m ³ x °d (mol)	2×7 (2×1,1)
Dimensions (H x W x D)	mm	610 × 410 × 505
Salt consumption per regeneration	kg	0.25
Order no.		11349



AQA LIFE

- The most compact in its class
- Duplex unit
- Round the clock soft water
- With the most modern technology
- Low salt and water requirement
- With optional solar module suitable for solar heating



BEWAMAT 75A



BEWAMAT 25A

- Compact design - perfect for small spaces
- Suitable for about 1-4 dwellings
- Fully automatic simplex softening
- Intelligent, volume-dependent regeneration - and adjustable integrated hygienisation function
- Range of accessories available
- In compliance with all relevant national and international standards
- Made in Germany

Bewamat 75A

INTELLIGENT QUANTITY-DEPENDENT REGENERATION

The unit is equipped with a device that disinfects the ion exchange resin during the regeneration. Spring-loaded non-return valves protect all water connections on the inlet side of the unit.

The system complies with all relevant national and international standards.

Type Bewamat 75A

DVGW		-
Nominal connection width	DN	32 (M 1 1/4")
Nominal flow rate in m ³ (at 1 bar pressure drop) in accordance with EN 14743	m ³	1.8
Nominal capacity according to EN 14743	m ³ x °d (mol)	75 (3.4)
Dimensions (H x W x D)	mm	1090 x 390 x 560
Salt consumption per regeneration	kg	3.50
Order no.		11325

Bewamat 25A

INTELLIGENT QUANTITY-DEPENDENT REGENERATION

The unit is equipped with a device that disinfects the ion exchange resin during the regeneration. Spring-loaded non-return valves protect all water connections on the inlet side of the unit.

The system complies with all relevant national and international standards.

Type Bewamat 25A

DVGW		-
Nominal connection width	DN	32 (M 1 1/4")
Nominal flow rate in m ³ (at 1 bar pressure drop) in accordance with EN 14743	m ³	1.4
Nominal capacity according to EN 14743	m ³ x °d (mol)	25 (4.5)
Dimensions (H x W x D)	mm	640 x 390 x 560
Salt consumption per regeneration	kg	1.20
Order no.		11324

OPTIONAL CONNECTION EQUIPMENT FOR BEWAMAT 75A & 25A

Multiblock X

Using the Multiblock X made of brass, the water flow to the softener or limescale protection unit remains uninterrupted. The water supply is maintained via an integrated bypass, so that maintenance work can be carried out without any problems.

Type Multiblock X

Order no.	30999
------------------	--------------

Connection set DN 32/32

For installation of BWT water softeners with nominal connection DN 32 to the Multiblock module consisting of: 2 flexible armoured hoses with formed angles and DN 32 cap nuts on both ends, TÜV tested, with 4 seals, 0.6 m.

Type Connection set

Order no.	11877
------------------	--------------

Aquadial Softlife Series

THE PERFECT FEELING OF WELLNESS, PROTECTION AND COMFORT

Perfect softened water is great for the whole family. Tough on scale and scum, kitchen and bathroom cleaning limes are reduced, leaving more free time for you and the family. Luxuriously silky water will bring a new dimension to washing, bathing and showering. Used shampoo, soaps and detergents wash away more easily leaving your hair clean and shiny and clothes soft to the touch. The BWT AQUADIAL softlife also protects your home and all your equipment from the damaging effects of limescale. Washing-machines, dishwashers and other similar appliances will be protected and continue to operate for many years.

Technical features and special characteristics

- Able to operate under low pressure conditions (>1,5 bar)
- Compact design
- Solid design for high sediment conditions
- Smart computerized regeneration management for max. performance

Type Aquadial Softlife		10 Bio	15 Bio	25 Bio
DVGW		-	-	-
Nominal connection width	DN		20 (M 3/4")	
Nominal flow rate in (at 1 bar pressure drop) in accordance with EN 14743	m ³	1.44	1.56	1.68
Nominal capacity according to EN 14743	m ³ x °d (mol)	26 (4.6)	43 (7.7)	75 (13.4)
Dimensions (H / W / D)	mm	532/270/480	602/270/480	804/270/480
Salt consumption per regeneration	kg	1.5	2.0	3.0
Order no.		11360	11361	11362

AQUADIAL Softlife Bio including electrolysis cell as a standard

Please note, connection equipment to be ordered separately



AQUADIAL SOFTLINE 10 BIO



AQUADIAL SOFTLINE 15 BIO



AQUADIAL SOFTLINE 25 BIO

BWT Perla silk

SMALL BUT POWERFUL



Enjoy, protect and save with BWT Pearl Water

Smart design – performance driven

The BWT Perla silk has been designed to compliment today's busy lifestyles, and to deliver copious amounts of perfect softened water efficiently with very low levels of water and salt consumption.

Meeting the demands of modern living

Luxurious silky-soft BWT Pearl Water is great for the whole family. Tough on scale and scum, kitchen and bathroom cleaning times are reduced, leaving more free time for you and the family.

It will bring a new dimension to washing, bathing and showering. Used shampoo, soaps and detergents wash away more easily leaving your hair clean and shiny and clothes soft to the touch.



BWT PERLA SILK SERIES

With WiFi connection

Get connected with the BWT App, your entry into a new era of customer satisfaction. Your personal water consultant for countless BWT products brings added value in terms of information, safety and comfort and a whole world of advantages.



BWT Best Water Home



BWT Perla silk Bio / BWT Perla silk Bio Wi-Fi

SMART ENABLED DOMESTIC WATER SOFTENER –
THE PERFECT LIFESTYLE CHOICE

Technical features and special characteristics

Fully automatic operation and easy to use with new Intuitive customer interface

- New smart power options for protected, interrupted, and non mains operation
- Proportional brining – more capacity, less salt consumption.
- New brine check valve prevents overfilling
- Automatic resin disinfection during regeneration
- **WiFi versions available**

Type BWT Perla silk bio / Wifi		S	M	XL
DVGW		-	-	-
Nominal connection width	DN		20 (M 3/4")	
Nominal flow rate in (at 1 bar pressure drop) in accordance with EN 14743	m ³	1.44	1.56	1.68
Nominal capacity according to EN 14743	m ³ x °d (mol)	26 (4.6)	43 (7.7)	75 (13.4)
Dimensions (H/W/D)	mm	532/270/480	602/270/480	804/270/480
Salt consumption per regeneration	kg	1.5	2.0	3.0
Order no. Bio		11020	11021	11022
Order no. Bio Wifi		11040	11041	11043

BWT Perla silk including electrolysis cell as a standard

Please note, connection equipment to be ordered separately



Fits to smallest spaces



BWT PERLA SILK S



BWT PERLA SILK M



BWT PERLA SILK XL

Rondomat Duo

2nd GENERATION
FOR LARGER BUILDINGS



NEW

Five versions impress with operational, environmental and hygienic standards.

The performance formula of new Rondomat Duo series is logical and simple: smaller units for higher flow rates. This is made possible by the maximum exchanger resin utilisation and shorter salt dissolution times offered by all five Rondomat Duo models. As a result the significant shortening of the regeneration intervals is also achieved. In addition the electronic control unit, guarantees a perfect balance between operation and regeneration time and controls also the period to dissolve the regeneration salt. The Rondomat Duo series significantly reduces stagnation periods with its alternating operation mode and ensures though highest hygiene.





The key highlights

1 THERMAL INSULATION

The first fully insulated softener – with control valve and regenerant tank. Prevents condensation and stops drinking water from heating up beyond the permitted temperature.

2 SAFETY, PURE AND SIMPLE

Maximum customer satisfaction guaranteed thanks to comprehensive **water damage safety** functions via signals from AQA Safe/Watch/Guard. **Perfect water hygiene at all times** with IoClean and thermal insulation.

3 BWT BEST WATER HOME APP

Get connected and discover your personal water assistant for BWT Rondomat Duo and many other BWT products. BWT Best Water Home app provides added value in the form of more information, safety and convenience, plus a whole range of extra benefits.

4 CLEAR COMMUNICATION

The illuminated indicator in the shape of BWT water droplet lights up different colours to indicate the system status based on sensor readings, so you can check on it with just a glance. If the droplet is lit up blue, everything's OK. If it is yellow or red, you can check out details via the touch display or the app.

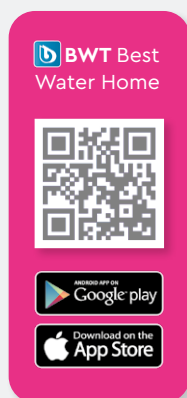
5 OUTSTANDING TECHNOLOGY

BWT Rondomat Duo units are top-end devices that do their job almost completely automatically. You will find all relevant information on the integrated touch display. The system data and operating parameters are easy to read off and control, while the unit's check-lists and wizards provide you with assistance for its operation.

6 FLAWLESS DESIGN

The perfect form, right down to the smallest detail – ergonomic design combined with compact dimensions. Modern control unit just like on our bestseller, the BWT Perla.

App downloaden!



Drinking water softeners

SELECTION TABLE

COMMERCIAL AND INDUSTRIAL TECHNOLOGY

2nd Generation



Type of device	Rndomat Duo 2.2	Rndomat Duo 3.2	Rndomat Duo 5.2	Rndomat Duo 6.2	Rndomat Duo 10.2
Operation mode	alternating	alternating	alternating	alternating	alternating
Nominal flow rate in m ³ /h (at 1 bar pressure drop) in accordance with EN 14743	3	3	7,5	6,8	10
Nominal capacity in accordance with EN 14743 in m ³ ×dH (mol)	2 × 45	2 × 93	2 × 178	2 × 250	2 × 416
rinse water consumption per 100% regeneration at 4 bar (approx. in l)	90	113	355	300	450
H / W/ D (mm) incl. regenerant tank	885/1245/535 mm	1405/1245/535 mm	1620/2045/610 mm	1620/2045/610 mm	1290/2310/610 mm
Overflow connection height	400 mm	400 mm	400 mm	400 mm	550 mm
Max. supply of regenerative	100 kg	100 kg	200 kg	200 kg	375 kg
Precision brining	■	■	■	■	■
lack of salt indicator	■	■	■	■	■
Salt level indicator	■	■	■	■	■
Direct connection for dosing unit	■	■	■	■	■
Multi Info Touch Display	■	■	■	■	■
AQA Watch function	■	■	■	■	■
AQA safe valve	■	■	■	■	■
AQA Stop	–	–	–	–	–
connection accessories	□	□	□	□	□
Order no.	11551	11552	11555	11553	11554
■ included in scope of delivery □ optional available – not available					

Rondomat Duo 2 Type 2-10

Duplex soft water system series, fully thermally insulated, volume-controlled; Hydraulic duplex central control valve made of fully insulated cast metal; cast metal connection piece with water meter for fully softened water and integrated manual blending.

Equipment: complete system, hardness tester, regenerant tank.

Installation requirements: Nominal pressure 10 bar, operating pressure 2.5 – 8.0 bar, mains connection 230/50 – 60 V/Hz, protection class IP 54, water temperature max. 25 °C, ambient temperature max. 30 °C for DVGW; 30/40 °C for industry.

Type Rondomat Duo		2.2	3.2	5.2	6.2	10.2
DVGW		registered				
nominal connection width	DN	32 (11/4" M)		50 (2" F)	50 (2" F)	
Peak flow with closed blending valve	m ³ /h	11	12	19	21	35
Product weight = Net weight	kg	80	95	545	625	695
Electrical power supply (max.)	Watt	40	40	75	75	120
Order no.		11551	11552	11555	11553	11554

Required connection accessories



Uni-valve block Rondomat Duo	2.2 / 3.2	5.2 / 6.2	10.2
Order no.	11821	11822	11803

Connection Set Drinking Water	2.2 / 3.2	5.2 / 6.2 / 10.2
Nominal connection width	DN 32 / 32	50 / 50
Order no.	11832	11876



Optional connection accessories and operating equipment – please see **page 76–77**.



RONDOMAT DUO 2.2



RONDOMAT DUO 3.2



REGENERANT TANK

- Input shaft for IoClean CT
- Ultrasonic salt level sensor
- Inspection shaft with brine valve

Drinking water softeners

SELECTION TABLE

COMMERCIAL AND
INDUSTRIAL
TECHNOLOGY



Type of device	Rondomat Duo 2	Rondomat Duo 3	Rondomat Duo 6	Rondomat Duo 10
Duplex system	■	■	■	■
Operation mode	alternating	alternating	alternating	alternating
DVGW certified	yes	yes	yes	yes
Special feature	high performance	high performance	high performance	high performance
Accommodation units*	12–40	40–60	50–100	up to 200
Flow rate in m³/h (at 1 bar pressure drop) in accordance with EN 14743	2.0 m³/h	3.0 m³/h	6.0 m³/h	10.0 m³/h
Nominal capacity in accordance with EN 14743 m³x°dH (mol)	2 × 36 (2 × 6.4)	2 × 96 (2 × 17.2)	2 × 250 (2 × 44.7)	2 × 360 (2 × 64.4)
Salt consumption per regeneration	1.44	3.40	8.00	12.50
Water consumption per regeneration at 4 bar water pressure liter	75	140	350	440
Height / Width / Depth (mm)	880/1200/900 mm	1400/1200/900 mm	1650/1900/1200 mm	1550/2050/1200 mm
Overflow connection height	475 mm	475 mm	620 mm	620 mm
Max. supply of regenerative	75 – 150 kg	75 – 150 kg	150–300 kg	150–300 kg
Precision mineralisation	–	–	–	–
Salt reserve indicator	■	■	■	■
Solar Module	–	–	–	–
Direct connection for dosing unit	■	■	■	■
Efficiency operation	■	■	■	■
Multi Info Touch Display	–	–	–	–
Installer integration	–	–	–	–
AQA Safe valve	–	–	–	–
Service reminder for backwash filter	–	–	–	–
Easy to service	■	■	■	■
Order No	11151	11152	11153	11154
Page	53	53	53	53
■ included □ optional – not available				

Rondomat Duo – DVGW Type 2 – 10

Quantity dependent controlled soft water pendular unit, with soft water short cycle generator, intelligent control electronics with control head and control device with ZLT-connection, individual setting of the raw water hardness at the press of a button, no additional system or pipe partition required, regeneration ends shortly before switching cycle, noticeable space-saving, integrated germ protection system, short and fast regeneration, optimal salt and flushing water consumption – independent of the prescribed water pressure. Scope of delivery: complete unit, hardness testing device.

Technical specifications: Rondomat Duo – DVGW

Nominal pressure 10 bar, operating pressure 2.5 – 8.0 bar, flow pressure min. 2.5 bar, mains connection 230 V/50 – 60 Hz, safety class IP 54, water/ambient temperature, max. 25/30 °C for DVGW; 30/40 °C for industry.

Type Rondomat Duo		Type 2	Type 3	Type 6	Type 10
DVGW		Yes			
Nominal connection width	DN	32 (1" ¼ male)		50 (2" female)	
Nominal flow rate (at 1 bar pressure drop) in accordance with EN 14743	m³/h	2.0	3.0	6.0	10.0
Nominal capacity according to EN 14743	m³x°d (mol)	2x36 (2x6.4)	2x96 (2x13.2)	2x250 (2x44.7)	2x360 (2x64.4)
Salt consumption per regeneration	kg	1.44	3.4	8.0	12.5
Total height	mm	880	880	1650	1550
Total depth	mm	900	900	1200	1200
Total width	mm	1200	1200	1900	2050
Order no.		11151	11152	11153	11154

Rondomat Duo – I (industrial softener) without electrolysis cell

Type Rondomat Duo – I (industrial softener)	Type 2	Type 3	Type 6	Type 10
Order no.	11178	11179	11180	11181

Optional Connection Equipment

FOR RONDOMAT DUO DVGW & RONDOMAT DUO I

Type	2	3	6	10
Univalve block Drinking water and industrial units				
Order no.	11821	11821	11822	11803
Connection set drinking water				
Connection width	DN	40 / 32	40 / 32	50 / 50
Order no.	11877	11877	11876	11876
Connection set Industry				
Connection width	DN	40 / 32	40 / 32	50 / 50
Order no.	11832	11832	11929	11929



RONDOMAT DUO 2 - 3

INDUSTRIAL SOFTENER



RONDOMAT DUO I





PERLA TABS



IOCLEAN



AQA TEST



PEARL WATER CHECK



SANITABS

Regeneration salt with hygienic effect

Sanitabs is used like standard regeneration salt. The difference is made by the hygiene cleaning component integrated into the salt.

This hygiene effect occurs in the brine container shortly after the addition of Sanitabs. In this way, impurities and deposits in the softening system are removed alongside the regeneration.

In the last regeneration step, (rinsing), the impurities are removed and flushed into the waste together with the residue of the regeneration salt and cleaning component. Then the switch to drinking water operation takes place.



Perla Tabs / ASIA SPECIAL

REGENERATION TABS – STANDARD

Tablets in accordance with DIN EN 973, 25 kg bag

Type	REGENERATION TABS	ASIA SPECIAL REGENERATION TABS
		40 bags x 25 kg / pallet
Order no.	94239	51953

IoClean

BWT IoClean is a unique cleaning tab specially developed for BWT pearl water systems. It is used to clean the ion exchanger resin and the regenerate tank.

Packaging unit = 4 pieces. IoClean CT is the version for large-scale commercial softeners.

Type IoClean	IoClean	IoClean CT
Order no.	18188 E	18193

AQAtest

hardness monitoring device, 10 pieces in one box

Type BWT AQA test
Order no.
18997 E

BWT Pearl Water Check

6 test strips for monitoring hardness water quality, 20 pieces per box

Type BWT pearl water check
Order no.
18994 E

Sanitabs

BWT Sanitabs were developed for the regeneration of water softeners in private homes. Sanitabs is a regeneration salt with an effective cleaning component in tablet form with impressive hygienic effect. Also available Sanisal FB (food and beverage industry) and Sanisal H (hotels, hospitals and schools) on request. In convenient 8 kg bags.

Type Sanitabs	8 kg
Order no.	94241

AQA stop including humidity sensor

Electronic water shut-off- for the prevention of water damage.

Type		¾" female	1" female	1 ¼" female
Nominal connection width	DN	20	25	32
Nominal pressure	bar (psi)	0.5-10 (7.3 - 145)		
Order no.		11825	11826	11827

Bewasol

SOLE PUMPING STATION FOR BUILDING SERVICES SOFTENER

The sole pumping station Bewasol is used when the water softening system is installed below the backflow level and the flushing hose / overflow hose cannot be laid at a slope to the sewer connection. 2 inlets: OUT overflow, horizontal, pipe inside 19 mm and out softener unit, vertical hose 38 mm (1 1/4" + 3/4")

Type Bewasol	
Order no.	11808

Siphon connection set

Simple and standard-compliant connection of soft water systems to the waste water. Connection pipe DN 40 with adapter to DN 50. Connection for 8mm flushing hose and 3/4" connection for overflow hose.

Type Siphon	
Order no.	11794

AQA Stop with AQA Guard Wireless water sensor

Electronic water stop - to protect against water damage (no interruption of water supply in case of power failure). Ball valve with external thread M 1" for combined size ¾" +1" and M 1 ½" for combined size 1 ¼" and 1 ½".

Type AQA Stop		¾" + 1"	1 ¼" + 1 ½"
Nominal connection width	DN	25	40
Order no.		11775	11774

AQA Guard Wireless Water Sensor

With the optional AQA Guard wireless water sensor, it is possible to install water sensors in other places in the house. E.g., in the kitchen and bathroom any possible water leakage can be easily detected. Up to 10 sensors can be added.

Type AQA Guard Sensor	Wireless
Order no.	11772



AQA STOP



BEWASOL



SIPHON



AQA STOP
INCL. AQA GUARD
WIRELESS WATER SENSOR



AQA GUARD WIRELESS
WATER SENSOR



MULTIBLOCK MODULE GIT



UNI-VALVE BLOCK



MULTIBLOCK X



INSULATION

Multiblock Module GIT

For rapid docking to the connection module (horizontal or vertical).

Type Multiblock Module GIT

Maximum nominal diameter	DN	32
Order no.	51969	

Uni-valve block

Water supply in acc. with German DWO during interruption of the flow of water to the softener.

Type for Rondomat Duo

	1/2/3	6	10
Maximum nominal diameter	DN 32	DN 50	DN 50
Order no.	11821	11822	11803

Multiblock X

Using the Multiblock X made of brass, the water flow to the softener or limescale protection unit remains uninterrupted. The water supply is maintained via an integrated by-pass, so that maintenance work can be carried out without any problems.

Type Multiblock X

	1"	1 3/4"
Order no.	30999	31000

Insulation for Multiblock X

Made of EPP for quick and efficient insulation. The insulation consists of two half-shells and can also be retro-fitted to already assembled Multiblocks.

Type Insulation for Multiblock X

	1"	1 3/4"
Order no.	30946	30944

Connection set DN 50 – Drinking water

2 flexible armoured hoses, length 800 mm, one side with cap nut 2", other side with male thread 2", including seals.

Type Connection set	DN 50
Nominal connection width	DN 50
Order no.	11876

Connection set DN 50 – Industrial use

2 flexible armoured hoses, length 800 mm, one side with cap nut 2", other side with male thread 2", including seals.

Type Connection set	DN 50
Nominal connection width	DN 50
Order no.	11929

GIT hose set DN 32/32

2 flexible armoured hoses with formed angles and DN 32 cap nuts on both ends, TÜV tested, with 4 seals, 1 m.

Type GIT hose set	DN 32/32
Order no.	11832

Connection set DN 32/32

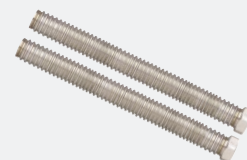
For installation of BWT water softeners with nominal connection DN 32 to the Multi-block module consisting of: 2 flexible armoured hoses with formed angles and DN 32 cap nuts on both ends, TÜV tested, with 4 seals, 0.6 m.

Type Connection set	DN 32/32
Order no.	11877

Insulation set TW DN25 – Drinking water

The sets are made of highly flexible soft foam based on synthetic rubber. All the necessary parts and brief instructions are included for retro-fitting the two existing flexible hoses.

Type Connection set			
Nominal connection width	DN	32	32
Length	mm	760	950
Order no.		30942	30943



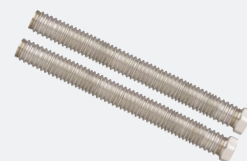
CONNECTION SET
DN 50 DRINKING WATER



CONNECTION SET
DN 50 - GIT



GIT HOSE



CONNECTION SET
DN 32/32 DRINKING WATER



INSULATION SET



MULTIMAT DN 20 - 32



MULTIMAT DN 40 - 50



TESTOMAT 2000

MULTIMAT BACKFLOW PREVENTOR

- independent from initial pressure (non-return valve included)
- no external energy necessary
- no air intake to the pipe system
- approval equivalent to pipe disconnecting system. Installation type 2 and dangerous goods classification 1 – 4
- simple construction
- cheaper than pipe disconnecting system
- housing made of brass (DN 20 – 65) or grey cast iron (DN 80)
- epoxy coated (DN 80)
- spring and valve seat made of stainless steel
- lockable connection for pressure gauges
- non-return valve at water inlet
- release valve in middle chamber
- non-return valve at water outlet

Multimat DN 20 – 32

Type Multimat	DN	20	25	32
Nominal pressure	PN (psi)		10 (145)	
Nominal flow rate	m ³ /h (gpm)	3.5 (15.4)	3.5 (15.4)	14 (61.6)
Pressure drop	bar (psi)		1.0 (14.5)	
Temperature max.	°C (°F)		60 (140)	
Installation length	mm	260	280	370
Order no.		11932	11933	11934

Multimat DN 40 – 80

Type Multimat	DN	40	50	65	80
Nominal pressure	PN (psi)			10 (145)	
Connection thread	R	1 1/2"	2"	flange connection according DIN	
Nominal pressure	m ³ /h (gpm)	16 (70.5)	16 (70.5)	35 (154)	56 (247)
Pressure drop	bar (psi)			1.0 (14.5)	
Temperature max.	°C (°F)			60 (140)	
Installation length	mm	370	394	460	460
Order no.		11935	11936	11937	11938

Testomat 2000

BOB operation without monitoring for up to 72 hours. Control device for monitoring the max. permitted residual hardness acc. to soft water units through regular chemical analyses based on indicators set using limit values. With impulse release for the actuation of alarm systems or an application, additional direct connection of a solenoid valve with lock.

Technical specifications: operating pressure 0.1 – 8 bar (1.45 – 116 psi), operating temperature, max. 40 °C (104°F), automatic interval 0–99 min., indicator solution/analysis 0.09 cm³, electrical connection 230 V/50Hz, H/W/D 380/480/280 mm.

Type Testomat	2000
Order no.	11833

Indicator solution

FOR TESTOMAT 2000 500 ML

Type Indicator Solution				
Colour change at	0.05–0.5 °dH	0.25–2.5 °dH	1.0–10.0 °dH	2.5–25.0 °dH
Order no.	11858	11859	11860	11861

Indicator solution

FOR TESTOMAT F 500 ML

Type Indicator Solution			
Colour change at	0.1 °dH	0.5 °dH	1.0 °dH
Order no.	11986	11985	11984

Internal pipe sealing by means of mineral substance dosing

Whenever water is taken off the DVGW-tested mineral dosing equipment Bewados E Modul releases less than 0.005 g (5 mg/l) per litre of the 'mineral substance combinations'. The mineral substance combinations react at the inner surface of the pipes and gradually build up a protective layer which separates the water from the tube (internal pipes sealing).

Existing rust and deposits sources are sealed and neutralised. In this way corroded pipes are sanitised. In cases of formation of corrosive sludge, it is recommended that the installation is cleaned with BWT rinsing equipment first to ensure solid internal surfaces for the subsequent mineral substance dosing. BWT mineral dosing substance, used for 'internal pipe sealing', are 'mineral substance combinations' that are specially adjusted to take the individual water and material properties into account.

Bewados Dosing units

Electronically controlled mineral substance dosing unit with integrated diagnostic system, coding switch, optical reserve display and optical/acoustical container change indication. Mounting is possible in pipes made of all materials in horizontally or vertically.

Mineral F substance container is not included in the scope delivery.

Technical specifications: permanent flow rate about 50 % of the maximum flow rate, dosing starts at 30 l/h, dosing interval 0.53 l, operating pressure max. 10 bar, water and ambient temperature max. 25/30 °C, mains connection 230 V/50 Hz, power consumption 12 V/7 VA, safety class IP 41.

Bewados E 3 Modul

Type Bewados		E 3 ¾"	E 3 1"
Nominal connection width	DN	20	25
Flow range	m³/h (gpm)	0.03–3.5 (0.13–15.4)	
Pressure drop for max flow rate	bar (psi)	0.8 (11.6)	
Container water treated per box	m³ (gal)	30 (7920)	
Order no.		17041	

Bewados E10/E20

Type Bewados E10 / E20		1"	1 ¼"
Nominal connection width	DN	25	32
Flow range	m³/h (gpm)	0.03–5 (0.13–72.5)	
Pressure drop for max flow rate	bar (psi)	0.8 (11.6)	
Container water treated per box	m³ (gal)	200 (52 800)	
Order no.		17042	

Required connection module on Page 32



BEWADOS E3



BEWADOS E10 / E20



MEDOTRONIC® P



MEDOMAT® FP



SEEDING POINT MEDO®

Dosing unit Medotronic® P

Electronically controlled dosing station for dosing mineral combinations QUANTOPHOS® P. Complete with contact water meter, cold water seeding point and filling device, electronically controlled dosing pump, Dosing tank, dosing and suction tube. Turbo mixing system (hand or electric agitators are not necessary anymore). Flanges PN 10 acc. to DIN 2501, part 1, from DN 50, (counter flanges must be provided on site). Technical data: Operating pressure 10 bar, pressure loss at max. Flow rate 0.8 bar, Mains connection 230 V / 50 Hz, water temperature max. 30 °C, ambient temperature Max. 40 °C.

Type Medotronic® P		20	30	110	180
Nominal connection width	DN	40	50	80	100
Operating pressure max.	bar	10	10	7.5	7.5
Working range	m³/h	0,1-20	0,1-30	0,6-75	0,8-90
Permissible continuous flow		100% of the max. flow rate			
Lower start-up limit	approx l/h	100	100	600	800
Dosing distance	l	2	5	10	10
Dosing tank Contents	l	60	100	100	200
amount of water to be treated per container filling	approx m³	460	770	770	1540
Installation length	mm	438	270	225	250
Order no.		17012	17013	17014	17015

Dosing unit Medomat® FP

Electronically controlled dosing unit for dosing of BWT additives into open and closed systems, e.g. drinking water, swimming pool water, cooling water and air-conditioning water. Parallel control via circulation pump, solenoid valve, flow meter, timer or manual control. Electronic dosing pump with optical empty indication and run-dry protection. Turbo mixing system (manual or electric stirrers are no longer necessary). Lockable dosing containers, suction pipe, 5 m dosing pipe, suction lance, seeding point (see accessories, not included).

For all types: Operating pressure 10/7 bar (145/101.5 psi), water/ ambient temperature max. 30/40 °C (86/104 °F), pump power can be continuously adjusted, mains connection 230 V/50 Hz.

Type Medotronic® FP		60	100	200
Dosing performance max.	l/h (gpm)	6 (0.03)	12 (0.05)	12 (0.05)
Dosing container contents	l (gal)	60 (15.8)	100 (26.4)	200 (52.8)
Operating pressure	bar(psi)	10 (145)	7 (101.5)	7 (101.5)
Order no.		17069	17070	17071

DOSING TECHNOLOGY COMPONENTS

Cold water seeding point Medo®

For dosing pumps type Medo® plastic, up to 30 °C (86 °F)

Type	1/4"	1/2"	3/4"
	4 x 6	4 x 6	4 x 6
			cleanable
Order no.	17998	17923	57991

Alarm cable

For dosing pumps GC/GA 2m 4pole

Type	ALARM CABLE
Order no.	17803

Signal cable

For dosing pumps GC/GA 2m 4pole

Type	SIGNAL CABLE
Order no.	17804

Single Dosing pumps Medo GC / GA and equipment for a retrofit of existing BWT dosing stations are available on request

COMPONENT: DOSING ADDITIVES

Depending on the area of application, you can find the corresponding dosing active agent

DOSING AGENTS FOR COOLING AND AIR CONDITIONING UNIT WATER SYSTEM

Product-name	Treatment performance	Application	Container size	Order no.
BWT CW-S 300	Ozone resistant hardness stabilizer, corrosion inhibitor	for open cooling systems	20 kg-canister	18146
RONDOPHOS KWN-2	Corrosion inhibitor and hardness stabilizer, contains zinc and phosphate	for open cooling systems	20 litre-canister	18147
BENAMIN D *	Chlorine based biocide	cooling circuit	20 litre-canister	58055
BENAMIN Fresh	Hydrogen peroxide-based biocide		22 kg-canister	87379

COMPONENT: DOSING ADDITIVES

Depending on the area of application, you can find the corresponding dosing active agent

DOSING AGENTS FOR HOT WATER, BOILER WATER AND AIR CONDITIONING UNIT WATER SYSTEMS

Product-name	Treatment performance	Application	Container size	Order no.
RONDOPHOS PIK 5	Oxygen binding powder, non vapour volatile, catalyzed	for hot water and heating systems	10 kg-bucket	18037
RONDOPHOS PIK 5	Oxygen binding powder, non vapour volatile, catalyzed	for hot water and heating systems	20 litre-canister	18058
RONDOPHOS PIK 9	Oxygen binding powder, pH-increasing, reduces residual hardness, non vapour volatile	for hot water and heating systems	10 kg-bucket	18038
RONDOPHOS PIK 11	Oxygen binding powder, non vapour volatile, pH-decreasing, reduces residual hardness	for hot water and heating systems	10 kg-bucket	18040
RONDOPHOS PIK 40	Powder product to increase pH and reduce residual hardness, non vapour volatile	for hot water and heating systems	10 kg-bucket	18043
RONDOPHOS PIK 50	Powder product to reduce pH, non vapour volatile	for hot water and heating systems	10 kg-bucket	18045
BWT BW-PL 40	Liquid product to increase pH and reduce residual hardness	for heating systems	20 litre-canister	18114
BWT BW-PL 40	Liquid product to increase pH and reduce residual hardness	for heating systems	6 × 1 litre	18130E
BWT SH-7004	Liquid product for the binding of residual oxygen and CO ₂ in steam/condensation systems, also raises pH in in steam/condensation	for steam generators with condensate return	20 litre-canister	18108

*** NOTE: Use biocides carefully. Always read the label and product information before use.**



MINERAL F

MINERAL SUBSTANCE
20 L IN BOXMINERAL SUBSTANCE
COMBINATION QUANTOPHOS®
WITH GERM PROTECTIONMINERAL SUBSTANCE
COMBINATION QUANTOPHOS®
SOLD IN BAGS

Minerals: F

For Bewados E 3 Module, Impulsor optronic T 3 module and Medotronic F.

Quantophos®	F1	F2/FE	F3	F4
Packed unit in box	4+3l	4+3l	4+3l	4+3l
Order no.	18022E	18026E	18024E	18025E

Bewatubin

Available in 20 l box.

Type Bewatubin	UNIVERSAL
Order no.	58081

Minerals: F + Cu₂/CS

For Bewados E 10/20 Module, Impulsor optronic T 20 module.

Quantophos®/Impulsan	F1	F2/FE	F3	F4	Cu ₂ /CS
Packing unit	20-l	20-l	20-l	20-l	20-l-canister
Order no.	18027	18031	18029	18030	18032
Packaging unit	10-l	10-l	10-l	10-l	
Order no.	18091	18095	18093	18094	

Mineral substance combination Quantophos® P

For Medotronic® P and Medomat® FP, portion bags for 20 l solution hygienically packed, with germ protection.

Only available in packaging units: 12 × 1000g bag in cardboard box.

Type Quantophos®	P 1	P 2/ PE	P 3	P 4	CUP
Order no.	18059E	18063E	18061E	18062E	18021E

Germ protection component

For germ protection of solution from QUANTOPHOS® P bags. Powder in plastic bottle (including measuring spoon for 15 l solution).

Type CC 1000 P	
Order no.	18065

Mineral substance combination Quantophos® P

For large consumers 25 kg bags with plastic liner.

Type Quantophos®	P 1	P 2/ PE	P 3	P 4
Order no.	18011	18015	18013	18014

Mineral substance combinations / additives F / P / Cu2 / CuP

Area of application	Function		'Mineral substance' in the environmentally friendly Bag-in-Box
Total hardness of 1–7 °dH or 0.3 – 1.3 mol/m ³ Soft water or water with aggressive characteristics. Hardness range acc. WRMG: Soft	Formation of a protective layer in galvanised and already partially corroded galvanised pipes.		Mineral substance Quantophos® F 1 / P1
Total hardness of 7–14 °dH or 1.3 – 2.5 mol/m ³ Medium hard water or softened water with aggressive characteristics. Hardness range acc. to WRMG: Soft to medium	Formation of a protective layer and limescale protection in galvanised and already partially corroded galvanised pipes.		Mineral substance Quantophos® F 2 / F E, P 2 / P E
Total hardness of 14 – 21 °dH or 2.5 – 3.8 mol/m ³ Hard water. Hardness range acc. to WRMG: Hard	Formation of a protective layer and limescale protection in galvanised and already partially corroded galvanised pipes.		Mineral substance Quantophos® F 3 / P3
Total hardness of 14 – 21 °dH or 2.5 – 3.8 mol/m ³ Hard water. Hardness range acc. to WRMG: Hard	Protection against limescale in pipes of all materials and cleaning of pipes with limescale.		Mineral substance Quantophos® F 4 / P4
Copper installations	Formation of a protective layer in copper pipes by raising the pH-value.	for water up to 25 mg/l free carbonic acid.	Mineral substance Quantophos® Cu2 / CS / CuP

All BWT mineral substances for drinking water treatment conform to the purity requirement of the list of treatment substances and disinfection processes in acc. with § 11 German DWO 2001.

WRMG = Wasch- und Reinigungsmittelgesetz (Washing and cleaning agents law)

Testing device	Measuring range	Intended use	Packaging unit	Order no.
Drinking water				
Aquatest hardness testing device	1 – 40 °dH	Determination of total hardness	10 pieces in a box	18997E
Indicator sticks	pH 0 – 14	Various test and application areas of pH-value checking	10 × 100 pieces in a box	18988E
pH-value testing device	pH 1 – 11	Setting the alkaline treatment	Single piece	18987
Cooling water				
Aquatest hardness testing device	1 – 40 °dH	Determination of total hardness	10 pieces in a box	18997E
Indicator sticks	pH 0 – 14	Various test and application areas of pH-value checking	10 pieces in a box	18988E
pH-value testing device	pH 1 – 11	Setting the alkaline treatment	10 pieces in a box	18987

ANTI-SCALING TECHNOLOGY

EFFICIENT CORROSION AND LIMESCALE PROTECTION



AQA total Energy

MODERN EFFECTIVE
3-PHASE PROTECTION



The natural source: **Healthy minerals everywhere in your home**

Our drinking water contains dissolved trace elements and minerals, such as magnesium – an important mineral compound for our bodies. It ensures energy metabolism and osteogenesis and gives us energy for everyday life. With AQA total Energy, all mineral compounds are retained in the water and you automatically ingest valuable minerals with your drinking water – day after

day, simply with every sip of water. A vital drinking enjoyment for added health and performance. Improve your drinking habits and your well-being through conscious drinking water enjoyment – with AQA total Energy, you can make your tap into a sparkling source of energy with valuable drinking water.

Easy to use – New cartridge technology with disposable refill

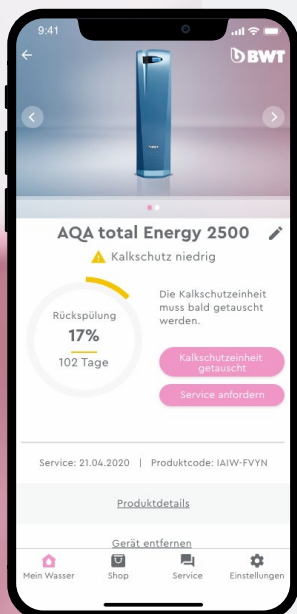
The completely new cartridge technology ensures optimal hygiene and simple handling when exchanging cartridges: Standardised cartridge-based construc-

tion: always designed with HydroModul quick connection, so that the active unit can be separated quickly and easily from the device.



AQA total Energy

AQA total Energy offers optimum lime-scale and corrosion protection for your drinking water installation and valuable water full of important minerals for you.



BWT Best Water Home

Download on the
App Store

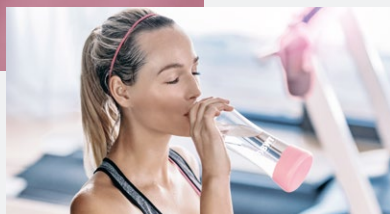
ANDROID APP ON
Google play



1

OPTIMAL LIMESCALE PROTECTION

Due to its revolutionary bipolar technology the limescale in the water is stabilised by forming nanocrystals. Therefore, it is unable to deposit itself in the pipes, installation system or boiler.



2

DRINKING WATER WITH VITAL INGREDIENTS

AQA total Energy leaves all the valuable minerals in the drinking water such as magnesium. In this way, you receive naturally precious drinking water.



3

EFFICIENT CORROSION PROTECTION

In addition, an effective corrosion protection coating is created in metallic pipes.



AQA TOTAL ENERGY 1500



AQA TOTAL ENERGY 2500

AQA total Energy

WITH THE UNIQUE 3-PHASE-TECHNOLOGY FOR VITALITY, LIMESCALE PROTECTION AND CORROSION PROTECTION

AQA total Energy, the natural and environmentally benign drinking and operation free water treatment with the 3-phase-technology provides Vitality through retaining all valuable minerals in the drinking water and improvement of magnesium and oxygen. Limescale protection through stabilisation by forming nanocrystals; limescale remains in the water not in the pipe or boiler. Corrosion protection through the natural formation of an effective protective coating against surface corrosion. The optimised refill system ensures constant hygiene.

AQA total Energy 1500

Scope of supply: Compact unit with integrated electronic control and cartridge/refill system.

Technical specifications: Nominal pressure PN 10 (145 psi), water/ambient temperature max. 30/40 °C (86/104 °F), mains connection 230 V/50 Hz, electrical power rating 60 W, power consumption 0.055 kWh/m³, enclosure type IP 54.

Typ AQA total Energy		1500
Nominal connection width	DN	25
Nominal connection		1" AG
Accommodation units		1
DVGW certified		yes
No. of unit moduls		1
Flow rate	l/h	1500
Total height	mm	1100
Total width	mm	320
Total depth	mm	200
Order-No.		80007

AQA total Energy 2500

Scope of supply: Compact unit with integrated electronic control and cartridge/refill system, with connection set DN 32/32.

Technical specifications: Nominal pressure PN 10 (145 psi), water/ambient temperature max. 30/40°C (86/104°F), mains connection 230 V/50 Hz, electrical power rating 60 W, power consumption 0.055 kWh/m³, enclosure type IP 54.

Typ AQA total Energy		2500
Nominal connection width	DN	25
Nominal connection		1 1/4" AG
Accommodation units		2 – 4
DVGW certified		yes
No. of unit moduls		1
Flow rate	l/h	2500
Total height	mm	1130
Total width	mm	310
Total depth	mm	280
Order-No.		80008

Connection equipment Multiblock X for AQA total Energy 2500 required – see page 76.

AQA total Energy 4500

Scope of delivery: Wall-mounted compact unit with integrated, electronic control and cartridge / refill system. L= Flow direction from left to right, R= Flow direction from right to left. **Technical specifications:** Nominal pressure PN 10 (145 psi), water/ambient temperature max. 30/40 °C (86/104 °F), mains connection 230 V/50 Hz, electrical power rating 60 W, power consumption 0.055 kWh/m³, safety class IP 54.

Typ AQA total Energy		4500 L	4500 R
Nominal connection width	DN	40	40
Nominal connection		1 1/2" AG	1 1/2" AG
Accommodation units		5 – 12	5 – 12
DVGW certified		yes	yes
No. of unit moduls		2	2
Flow rate	l/h	4500	4500
Total height	mm	1105	1105
Total width	mm	320	320
Total depth	mm	320	320
Order-No.		80009	80006



AQA TOTAL ENERGY 4500



CARTRIDGE REFILL

Cartridge refill

FOR AQA TOTAL ENERGY 1500 - 4500

Technical specifications: capacity 350 – 600 m³ (1541 – 1761 gpm) about 3 years (depends on water quality and consumption).

Typ Cartridge-Refill AQA total Energy	1500 - 4500
Order-No.	84130

AQA total Energy 5600 – 14000

Wall-mounted unit (in quick mounting frame), distribution pipe system made of high-quality yellow brass casting. Modular construction with integrated shut-off set and water meter (no water shut-off in case of cartridge exchange, no by-pass necessary). The modules are connected with the patented rapid connection system.

Water connection on left or right, as required. Scope of delivery includes connection unions with male thread and cover for dust protection and water vessel.

Control system: Ready for installation in a standard control panel (safety class IP 54). Power electronic with separate fuse protection for each module; the whole system is controlled and monitored by one central processor. Completely electrically wired, connection with safety plug 230 V/50 Hz.

Connection for building automation (pre-warning in case of cartridge exchange and fault indication)

Control lamps on the fuse cabinet door.

For all types: Nominal pressure PN 10 (145 psi), water/ambient temperature max. 30/40 °C (86/104 °F), mains connection 230 V/50 Hz, electrical power rating 60 W, power consumption 0.055 kWh/m³, safety class IP 54.



AQA TOTAL ENERGY
5600 - 14000



CARTRIDGE REFILL

Type AQA total Energy		5600	8400	11200	14000
Nominal connection width	DN	40	40	50	50
Nominal connection		1 1/2" AG	1 1/2" AG	2" AG	2" AG
Accommodation units		13 – 18	19 – 24	25 – 36	30 – 50
DVGW certified		Yes			
No. of unit moduls		2	3	4	5
Flow rate	l/h	5600	8400	11200	14000
Total height	mm	1280	1280	1280	1280
Total width	mm	560	560	825	825
Total depth	mm	470	470	470	470
Order-No.		80010	80011	80012	80013

Cartridge-Refill

FOR AQA TOTAL ENERGY 5600 - 14000

With the new generation AQA total Energy, the cartridge replacement, which is required for hygienic reasons, is simplified. From now on, only the working unit, so-called cartridge refill, must be changed. This new cartridge refill for AQA total Energy ensures permanent constant efficiency, that means:

phase 1 for limescale protection – through stabilisation of the lime particles in the water
phase 2 for corrosion protection – through the natural formation of an effective protective coating
phase 3 for vitality – through optimisation of magnesium and oxygen

Technical specifications: capacity 350 – 600 m³ (1541 – 1761 gpm) about 3 years (depends on water quality and consumption).

Typ Cartridge-Refill AQA total Energy	5600 – 14000
Order-No.	84131

AQA nano – Limescale protection

- **BWT safety**
Reliable protection against limescale, blocked pipes and the unnecessary hygiene risks caused by deposits.
- **BWT drinking water guarantee**
All valuable minerals are retained in the water.
- **BWT convenience**
The electronic controller provides a reliable reminder of an annual service.
- **Effective limescale protection up to 20 °dH**

AQA nano

The alternative limescale protection system to prevent and avoid limescale deposits in pipes and boilers up to 20 °dH. Scope of delivery: Connection piece with integrated backwash preventer and connection threads in 1", packed ready for installation including mounting bracket and mounting materials (wall-plugs, screws). Suitable for installation in horizontal and vertical pipes.

Mains connection 230 V/50 Hz, water / ambient temperature, max. 30/40 °C (86/104 °F).

Type AQA nano		
Nominal connection width	DN	25
Nominal connection	AG	1"
Flow rate	l/h	1500
Limescale protection capacity to max. 20 °dH	m³/h	1,5
PN operating pressure	bar (psi)	16 (232.1)
Dimensions (H x W x D)	mm	710 × 300 × 220
Order-No.	23301	

AQA nano

AQA NANO HYGIENE REPLACEMENT SET

Type AQA nano	
Order-No.	23937



AQA NANO



AQA NANO HYGIENE REPLACEMENT SET

BWT PERFECT WATER

HYGIENE - SAFETY - HEALTH



BWT UV systems

SAFE AND HYGIENIC WATER

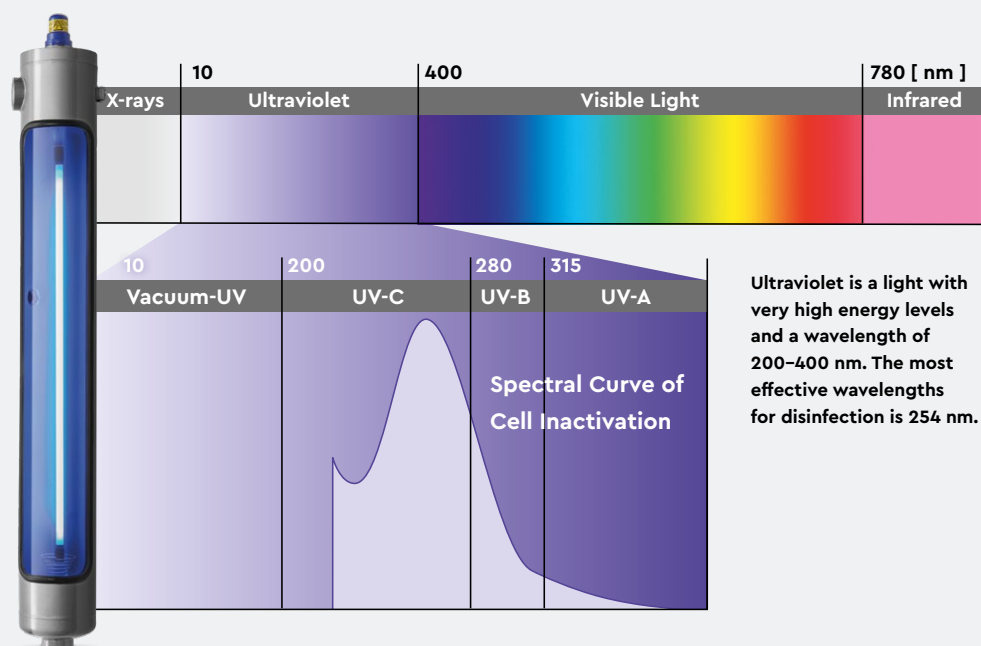
Without chemicals

UV Light destroys bacteria naturally

Drinking water is the most important food for humans, therefore water is strictly controlled by state regulations to protect consumers from diseases and ensure their well-being. The most important requirement is, that it is free of pathogens and pose no health risks to the people. With the Bewades range, BWT realizes a process that disinfects without the use of any harmful chemicals but with UV light.

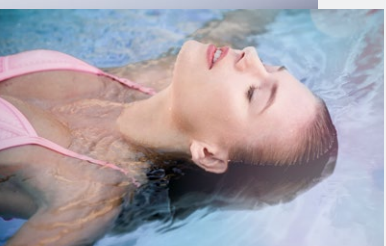
Disinfection means a 99.99% reduction of the pathogenic germs which are present in water. After exposure to UVC light with a dose of 400 J/m^2 the genetic information (DNA) of bacteria and microorganism is damaged that heavily, that they are unable to reproduce and finally 'killed'. No harmful by-products will be generated and there is no change in the water chemistry, taste, colour and odour!





1 PRIVATE HOMES

Installed right after the water meter or under the kitchen sink: Bewades Blue protects you and your loved ones – best water for drinking, cooking, showering or bathing.



2 SWIMMING POOLS AND SPA'S

Easy and automatically operation in technical rooms: Bewades MQ turns your pool into a spring water oasis – say goodbye to chlorine smell, red eyes and skin irritation.



3 APARTMENT AND OFFICE BUILDINGS

The worry-free and safe solution for facility management and service providers: upgrade the technical rooms with Bewades HP to keep bacterial contamination and germs out of water installation system.



4 PROCESS WATER

Remote operated from the control room: product hygienically impeccable- simply to install, with low operating and maintenance costs.

BWT Safety Filter

LEGIONELLA PROTECTION IN
SHOWERS AND BATHROOMS

Perfect solution for the health and care sector

The **BWT safety filter B-SAFE** protects against legionella. It was specially developed for showering and is mounted between the shower hose and sanitary fitting:

- Cost-effective
- Highly efficient protection
- Filters even the finest particles out of the drinking water
- Suitable for flow volumes of up to 800 l per hour.

Legionella in short – some risks and causes

Legionella are gram-negative, aerobic rod-shaped typically flagellated bacteria that might contaminate water and cause by inhalation health problems.

The two most common forms of illness are:

- Legionnaires' disease: a bacterial pneumonia. If the infection is not treated the mortality is up to 80 %.
- Pontiac fever: a milder, non-pneumonic, flu-like illness that does not require hospitalization.

Everybody can be affected by legionellosis but some people are more likely affected:

- stressed people
- athletes
- travellers
- elderly people (> 50 years)
- smokers

By using this retro-installation technology, you add an additional protective barrier. Nevertheless, the B-SAFE safety filter should not be employed as the only protection against legionella in shower water in the long-term. It is necessary to employ water treatment processes to disinfect warm water and to kill legionella in the whole water system. This filter is not suitable for installation in sterile areas in hospitals.

- patients, especially those patients with suppressed immune system (HIV-patients, bone-marrow or organ transplant patients, sufferers)
- people who consume a lot of alcohol
- people with lung diseases

The optimum conditions for Legionella growth are:

- Water temperatures between 20 and 50 °C (68 and 122 °F) and a pH value between 5.0 and 8.5. Optimal growth occurs at water temperature between 35 and 45 °C (95 and 113 °F).
- Biofilms in water distribution systems. Legionella live and reproduce in protozoa e.g. amoeba. Other organisms living in biofilms supply Legionella with important nutrients.
- Presence of nutrients such as calcium, magnesium (limescale), iron and zinc compounds (corrosion products) and organic substances.

B-SAFE

The B-SAFE filter is used for the removal of legionella, amoeba and other germs from the water at taps in showers and also bathrooms.

With contaminated hot water circulating systems the filter at the taps is used in addition to a disinfection procedure.

After the preliminary filtration, legionella, germs and amoeba are separated in the B-SAFE filter by means of a dead-end hollow fibre micro-filtration diaphragm. The micro-filtration diaphragm has a pore diameter of 0.02 µm, so that germs and amoeba are separated safely.

A ball valve that is installed at the inflow of the filter prevents the regrowth of the systems pipework.

The peak flow rate through the filter is 800 l/h (3.52 gpm) at the maximum pressure of 6 bar (87 psi). The B-SAFE filter has to be exchanged every 3–4 weeks.

Type B-SAFE		universal
Placement		shower, bath
Thread dimensions		1/2"
Max. flow rate	l/h (gpm)	800 (3.52)
Max. system pressure	bar (psi)	6 (87)
Pressure drop, new filter at 800 l/h (3.52 gpm), approx.		0.8 (11.6)
Max. water temperature	°C (°F)	65 (149)
Max. water temperature for short times (< 5 min.)	°C (°F)	80 (176)
Filter service time, max.		4 weeks
Order no.		23206E

NOTE: Loss of pressure increases as the operating period continues; replacement of the filter is necessary, if the loss of pressure is excessive, even when the recommended time is not exceeded.

Generally dependent on the quality of the water; sand, rust and limescale particles, biofilm particles and other turbidity may lead to a shortening of the operational life.

B-SAFE universal shower hose, short

Connection hose for the connection of the B-SAFE universal filter directly to the shower hose.

Type	B-SAFE universal shower hose, short	
Length	mm	250
Order no.	23945	



B-SAFE SAFETY FILTER



INSTALLATION EXAMPLE

BWT RO₃UV

THE NEW GERM BARRIER
FOR ROOF TANKS



Hygiene Management on a high level The most effective teamwork

Every domestic or commercial property has different varieties and sizes of water storage tanks – some located on the rooftop, others in the basement with one in common: the importance of hygiene. Despite regular cleaning intervals, did you know there may be hygi-

ene gaps and obviously clean water could become a health hazard like any other food?

Life-threatening infections are the risk of drinking or even just inhaling water while showering or brushing teeth contaminated with pathogens or bacteria.

What happens in a roof top tank? Three factors can cause problems

Formerly clean water becomes unable for drinking. Dangerous germs, such as legionella can multiply themselves over time and the water transports them to the point of use – to your tap.

Stagnation: Particles that are carried with the water settle in the tank. A perfect breeding ground for microorganism. Additionally the water gets in the tank enough time to take the germs in and transport them to the point of use

Deposits: Additionally the tanks are never completely closed. Over the tank breathing the water gets contaminated by airborne pollution and even insects.

Heat: The tanks are in full sun light, so that the water is just heated up enough to provide perfect conditions for bacterial growth

RO₃UV combines two different water treatment methods

UV safely disinfects the water while passing the unit, the subsequently injected ozone is dragged along and continues the job in tank and pipe. This way, not only the stored water but also the installation is kept free of any microbiological growth. In line with our company philosophy the process works completely free of chemicals: An Ultra Violet System (UV) purifies the water in the most natural way like the sun. Furthermore, RO₃UV generates Ozone just from ambient air. Ozone decomposes back to oxygen after having fulfilled its task quickly and efficiently.



BWT RO₃UV



1

COST-EFFECTIVE AND UNPROBLEMATIC

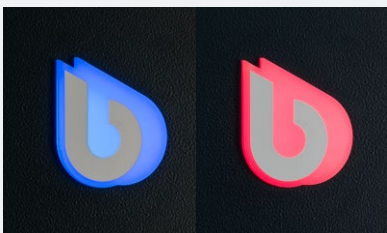
RO₃UV consumes only little power and wastes no water. No annoying handling or storage of chemicals is required, as ozone is produced safely in the unit on demand.



2

VERSATILE AND EFFICIENT

RO₃UV disinfects the water and enhances the water quality in general by reducing colors and odors. The multiple barrier approach with ozone and UV protects against most common water diseases. Ozone is the most powerful oxidant available and acts 3000 times faster than chlorine as a bactericide. This though without creating any hazardous disinfection by products, but keeping the water naturally clean.



3

RELIABLE AND EASY

RO₃UV works automatically and unattended. It provides you 24/7 with safe and healthy water for your home – and that basically maintenance free: only an annual service is needed. In operation the status of the unit is shown at a quick glance by the color of the illuminated BWT drop.

Bewades UV Systems

SELECTION TABLE



Type		Bewades blue	Bewades LC	Bewades N	Bewades T
		0.5 - 3.5	70W70/08 LC - 400W200/17 LC	80W80/11 N - 1080W270/50 N	80W80/14 N - 2100W350/41 N
Description		The ultimate in UV protection for your home – POE or POU	With all the features required by German DVGW for poor water qualities with low UV transmittance.	Certified disinfection performance confirmed by microbiological tests for all drinking water applications.	Certified drinking water disinfection for a broad field of applications.
Nominal connection width	DN	15 – 25	20 – 80	32 – 200	50 – 250
Maximum flow rate *	m ³ /h	0.5 – 3.5	2.4 – 38	4.0 – 251	5.9 – 342,10
Generated amount of ozone	mg/h	–	–	–	–
Max. operating pressure	bar	10	10	10	10/16
Expected lamp life (depends on operating conditions)	h	9,000	12,000	12,000	12,000
Connection power	Watt	20 – 51	75 – 450	80 – 1130	110–2455
Number of UV lamps		1	1 – 2	1 – 4	1–6
Page		102	104	104	106

* @ T100 =70% UVT, 400J/m², End of lamplife – not available



Bewades HI	Bewades HP	RO ₃ UV	Bewades MQ
70W70/08 HI – 2000W200/40 HI	400W200/17 HP – 800W200/22 HP	10 – 50	400-8000 MQ
Reactor design taken from the Bewades N series and reduced to the essential features: Simplicity, Robustness and Reliability for all areas of water disinfection.	Enforced construction for high pressure applications up to 25 bar – E.g. high-rise buildings	2 in one solution: rack mounted unit combining two disinfection technologies UV and ozone	For perfect pool water without the typical chlorine smell and any eye or skin irritation
20 – 200	80 – 125	40	80 – 300
2.4 – 328	38 – 90	2-10	24 – 1122
–	–	400-2,000	–
10	25	10	10
12,000	12,000	12,000	8,000
100 – 2100	450 – 850	205	450 – 8,050
1 – 10	2- 4	1	1 – 4
105	105	107	107

BWT Bewades blue

USER FRIENDLY UV TECHNOLOGY



Highest quality, best drinking water, no compromises! The ultimate UV disinfection

If you are unsure of the microbiological quality of your source water or if you are looking for additional security from municipal water source, the BWT has the solution in the new residential series of BWT UV systems: Bewades blue

Advantages at a glance

- Intuitive handling via color display with clear text messages – One look info
- Very robust online sensor (optional) monitoring permanently the systems performance and alarming if the water is unsafe to drink
- High grade stainless steel reactor, very hygiene and corrosion resistant
- Reliable, robust UV lamp for durability and long life (9,000 hours)
- Electronic controller in a splash proof case, virtually eliminates common water damage issues
- Complete set - ready to install, inclusive wall mounting kit



Bewades blue

BWT provides the ultimate in UV protection for your home with the optional inclusion of a true 254nm Teflon® based UV sensor that continuously monitors the performance of the UV system and displaying the output via a colour screen. In addition to UV output, diagnostics, system status, warnings, even QR codes are included. With the integral expandability port, the addition of a 4–20mA output or a remote alarm is a simple plug-and-play option!

Different types available for under-the-sink and main pipe installation.

Technical specifications:

- ‘Future proof’ expandability for future upgrades & options
- Axial flow polished reactor, designed and manufactured to ASME pressure vessel standards
- Free floating, keyed-in-place UV sensor
- User friendly bayonet style lamp connector (quick ¼ turn removal with no extra tools needed)

Type Bewades blue		0.5	1.0	2.0	2.5	3.5
Nominal connection width		1/2"	3/4"	3/4"	1"	1"
Max. flow rate [400 J/m²] @T ₁₀ =95%	m³/h	0.5	1.0	2.0	2.5	3.5
Lamp Power	W	15	22	39	50	42
Connection power	W	20	30	49	62	51
Reactor dimensions	mm	64×364	64×542	64×895	64×1016	89×917
Expected lamp service life*	h	9,000				
Controler dimensions	mm	172×92×102				
Operating pressure min./max.	bar	0.7/10.0				
Order no. basic unit		23391	23392	23393	23394	23395
Order no. option: sensor		23850	23850	23850	23850	23851

*depends on operating conditions



BEWADES BLUE



BEWADES BLUE
CONTROL UNIT

Bewades LC

Reactor design taken from the Bewades N series and reduced to essential features: Simplicity, Robustness and Reliability for all areas of water disinfection.

Technical specifications:

- Integrated cooling fan to fulfill all requirements for warm climates
- Easy control displaying total hours of operation and lamp performance
- Compact design for easy installation and servicing
- Potential-free contact for lamp failure connection to building control

Type Bewades LC		70W70/ 08LC	80W80/ 11 LC	100W100/ 11LC	200W200/ 11LC	400W200/ 17 LC
Nominal connection width	DN	20	32	50	50	80
Max. volume flow 400 J/m ² at T ₁₀₀ = 70 %	m ³ /h	2.4	4.2	6.8	13	38
Max. operating pressure	bar	10				
Expected lamp service life*	h	12,000				
Connection power	W	75	90	110	220	450
Number of UV lamps		1	1	1	1	2
Order no.		23374	23084	23085	23059	23346

Bewades N

DVGW Certified disinfection performance (3rd party validated) confirmed by microbiological tests for all drinking water applications.

Technical specifications:

- According to the stringent, internationally recognized standards of the German Technical and Scientific Association for Gas and Water (DVGW)
- Sophisticated microprocessor based UV control II – easy to use
- Validated sensor technology for highest operational safety
- Electronic ballasts for a long lamp life and to compensate voltage fluctuations
- CFD optimized hydraulically design ensures safe water disinfection and saves energy costs

Type Bewades N		80W80/ 11N	200W200/ 11N	390W130/ 22N	600W200/ 22N
Nominal connection width	DN	32	50	80	80
Max. volume flow 400 J/m ² at T ₁₀₀ = 80 %	m ³ /h	4	8.5	24	57
Max. operating pressure	bar	10			
Expected lamp service life*	h	12,000			
Connection power	W	180	220	450	650
Number of UV lamps		1	1	3	3
Order no.		23282	23283	23288	23343

Type Bewades N		200W200/ 17N	390W130/ 27N	810W270/ 40N	1080W270/ 50N
Nominal connection width	DN	50	80	150	200
Max. volume flow 400 J/m ² at T ₁₀₀ = 80 %	m ³ /h	16.7	47.8	181.9	251
Max. operating pressure	bar	10			
Expected lamp service life*	h	12,000			
Connection power	W	220	450	850	1130
Number of UV lamps		1	3	3	4
Order no.		23353	23354	23289	23299

*depends on operating conditions



BEWADES LC



BEWADES N

Bewades HI

With all the features required by German DVGW – excellent for poor water qualities with low UV transmittance.

Technical specifications:

- High density of lamps per diameter to ensure sufficient performance in turbid waters
- Sophisticated microprocessor based UV control II – easy to use
- Validated sensor technology for highest operational safety
- Electronic ballasts for a long lamp life and to compensate voltage fluctuations

Type Bewades HI		70W70/ 08HI	400W200/ 17HI	800W200/ 22HI	1000W200/ 22HI	1200W200/ 27HI
Nominal connection width	DN	20	80	125	125	150
Max. volume flow 400 J/ m ² at T ₁₀₀ = 70 %	m ³ /h	2.4	38	90	109	158
Max. operating pressure	bar			10		
Expected lamp service life*	h			12,000		
Connection power	W	100	450	850	1100	1300
Number of UV lamps		1	2	4	5	6
Order no.		23373	23050	23052	23053	23054

Type Bewades HI		1400W200/ 32HI	1600W200/ 35HI	1800W200/ 35HI	2000W200/ 40HI
Nominal connection width	DN	150	200	200	200
Max. volume flow 400 J/ m ² at T ₁₀₀ = 70 %	m ³ /h	207	248	276	328
Max. operating pressure	bar			10	
Expected lamp service life*	h			12,000	
Connection power	W	1500	1700	1900	2100
Number of UV lamps		7	8	9	10
Order no.		23055	23056	23057	23058

Bewades HP

Reinforced construction for high pressure applications up to **25 bar** – e.g. high-rise buildings

Technical specifications:

- Unique technology & sophisticated microprocessor based UV control II
- Superior welding performance – engineered by BWT- to withstand extreme conditions
- Validated sensor technology for highest operational safety
- Meets all requirements of National Standard of Republic of China

Type Bewades HP		400W200/ 17HP	600W200/ 22HP	800W200/ 22HP
Nominal connection width	DN	80	100	125
Max. volume flow 400 J/m ² at T ₁₀₀ = 70 %	m ³ /h	38	65	90
Max. operating pressure	bar		25	
Expected lamp service life*	h		12,000	
Connection power	W	450	650	850
Number of UV lamps		2	3	4
Order no.		23367	23368	23369

*depends on operating conditions



BEWADES HI



BEWADES SENSOR
for N and HI SERIES.
Validated sensor – for highest
operational safety



BEWADES HP



BEWADES T WITH
COMFORT CONTROLLER



BEWADES T WITH
COMPACT CONTROLLER

Bewades T

Certified drinking water disinfection and state of the art technology. Bewades T for a broad field of applications for efficient, safe and chemical-free water disinfection.

Technical specifications:

- Unique dynamic lamp heating adjusts the lamp output in seconds and provides for optimum disinfection even rapidly varying flows and water temperatures
- Homogeneous UV dose, thanks to optimized flow behavior in the reactor, guarantees maximum flow output with a minimum number of lamps and minimum pressure loss
- reduced life cycle costs due to long service life of Bewades T high-output lamps with low energy consumption and high UV output.
- High flexibility thanks to vertical or horizontal installation
- User-friendly and intuitive control for the display of operating statuses and adjustment of operating parameters
- Control cabinet with efficient recirculation cooling ensures the long life electronic components and protects against corrosion in aggressive ambient conditions.
- **Compact controller for single UV lamp units**
- **Comfort controller for multiple UV lamp units**

Type Bewades T		80W80/ 14N	230W230/ 14N	350W350/ 17N	700W350/ 26N
Nominal connection width	DN	50	80	100	150
Max. volume flow 400 J/m ² at T ₁₀₀ = 70 %	m ³ /h	5.9	21.8	37.9	93.5
Max. operating pressure	bar		10		10/16
Expected lamp service life*	h		12,000		
Connection power	W	110	310	430	835
Number of UV lamps		1	1	1	2
Order no. PN10		27025	27026	27027	27028
Order no. PN16		-	-	-	27009

Type Bewades T		690W230/ 32N	1050W350/ 32N	1400W350/ 36N	2100W350/ 41N
Nominal connection width	DN	150	200	200	250
Max. volume flow 400 J/m ² at T ₁₀₀ = 70 %	m ³ /h	71.1	148.4	210.4	342.1
Max. operating pressure	bar		10/16		
Expected lamp service life*	h		12,000		
Connection power	W	825	1240	1645	2455
Number of UV lamps		3	3	4	6
Order no. PN10		27029	27030	27031	27032
Order no. PN16		27010	27011	27012	27013

*depends on operating conditions

Bewades RO₃UV

The most effective teamwork of two technologies: Ozone and UV.

Technical specifications:

- Quick status feedback via the color of the illuminated BWT drop
- High operational security thanks to a modular design and the unique two stage approach (UV and Ozone)
- High quality painted sheet steel housing for IP54 protection
- For wall mounting. For freestanding installations use an optional rack

Type Bewades RO ₃ UV		10	25	50
Nominal connection width	DN	40	40	40
Max. flow over system				
Quick status feedback via the color of the illuminated BWT drop	m ³ /h	2	5	10
General amount of ozone	mg O ₃ /h	400	1000	2000
Max. operating pressure	bar		10	
Expected lamp service life*	h		12,000	
Connection power	W	250	180	250
Number of UV lamps		1	1	1
Order no.		23132	23035	23034

Bewades MQ

For perfect clear spring water in your pool without the typical chlorine smell and any eye or skin irritation.

Technical specifications:

- Medium pressure multi-wavelength system to disinfect and to eliminate bound chlorine
- Manual or automatic wiper system for simplified maintenance
- Dimmable ballasts to reduce the power consumption to the minimum required
- Communication interface with analogue In-/output

Type Bewades MQ		400-8000 MQ
Nominal connection width	DN	80 – 300
Max. volume flow 400 J/m ² at T ₁₀₀ = 70 %	m ³ /h	24 – 1,122
Max. operating pressure	bar	10
Expected lamp service life*	h	8,000
Connection power	W	450 – 8,050
Number of UV lamps		1-4
Order no.		on request

Also available as cost effective basic version Bewades MQ_{LC}. Further information on request.

*depends on operating conditions

Hygiene and safety for your storage tank

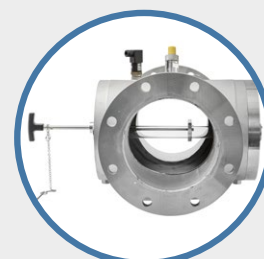


BWT RO₃UV

Pure 'spring' water for your pool



BEWADES MQ





Reverse Osmosis

ULTRAPURE WATER FOR LABORATORIES,
AIR CONDITIONING TECHNOLOGY,
HEALTH FACILITIES AND MORE

Interesting facts

Reverse osmosis (RO) is a method borrowed from nature. The technology has been tried-and-tested in water treatment systems all over the world for decades.

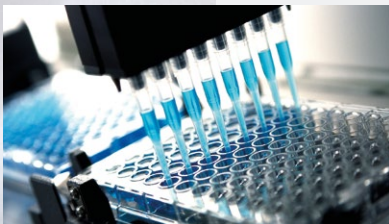
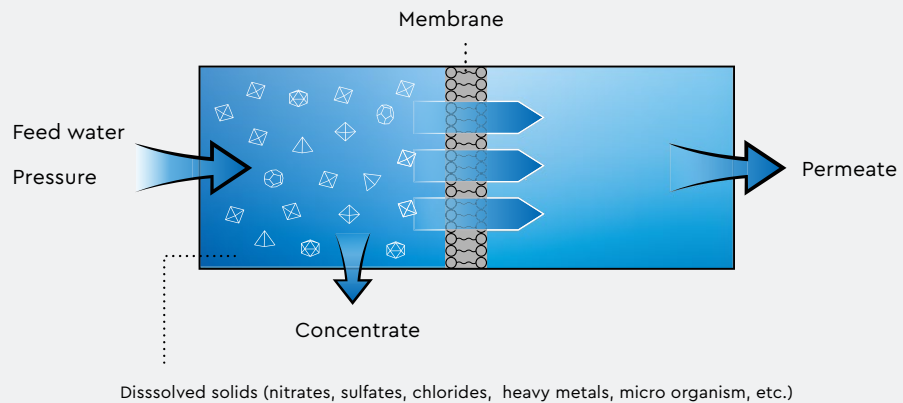
The natural osmosis process is reversed with reverse osmosis. This means water is pressed through a semipermeable membrane at high pressure. Pure water molecules can pass through this without problems due to their molecular size. Dissolved salts, such as nitrates, sulphates and chlorides together with heavy metals and even microorganisms, such as bacteria, are filtered out.

The feed water flow is separated under pressure into pure water (permeate) and the undesirable substances (concentrate). The so-called concentrate is discarded, while the permeate is supplied to the intended technical use.

Through the reverse osmosis, the salt content of the water is reduced by approx. 97-98 %, thus reducing the conductivity of 500 $\mu\text{S}/\text{cm}$ in the untreated water to approx. 10 $\mu\text{S}/\text{cm}$ in the permeate.

Various Uses

The advantages of the consistent high-purity water quality of reverse osmosis are finding ever new fields of use. The low-germ and low-pollutant water with the lowest conductivity ensures functional security and the best results for work and production processes in laboratory technology, in health facilities, dental practices and dental laboratories, in air conditioning technology and in building cleaning.



1 LABORATORY TECHNOLOGY

Through reverse osmosis, demineralised water can have many uses in a modern laboratory, e.g. as a solvent for analyses, for steam production for sterilisers or for use in laboratory washers.



2 AIR CONDITIONING TECHNOLOGY

Incrustations by hard water or biological films lead to blockages and inefficiency of the air conditioning equipment. This is why renowned manufacturers generally recommend the use of low-salt water (reverse osmosis).



3 HEALTH FACILITIES

In the pharmaceutical industry and in medical research, low-salt water is used for sensitive laboratory applications or in sterile preparation. In addition, cleaning and disinfection appliances are operated with it.



4 DENTAL LABORATORIES & PRACTISE

In dental laboratories, the main fields of use for reverse osmosis water are in the field of autoclaves, sterilisers, washers and other equipment needed for general laboratory purposes.

Reverse osmosis

SELECTION TABLE



UNIT TYPE	PERMAQ® PICO 10-90 ONLINE FT/OFFLINE FT	PERMAQ® PICO VARIO 40 - 90
Description	Ultra-compact design, hygiene-optimized due to integrated dead-volume-free connection technology type 10-90. Suitable for "under the sink" installation (type 10-30). Offline version for storage tank operation. Online version for tank-less operation. FT version equipped with flow meter (for permeate and raw water) and concentrate control valve.	Ultra-compact design due to integrated, dead-space connection technology. Hygienic online RO without membrane pressure tank and modulated permeate output thanks to motor speed control and intelligent hydraulics. Simple and user-friendly operation. Conductivity measurement permeate. Also available as "HR" version (HR = high rejection).
Permeate		
Permeate output online at approx. 3 bar counterpressure [l/h]	160-2500	150-1250
Permeate output offline (free flow) [l/h]	200-2800	-
Salt retention rate [%]	> 98,0	> 98,5
Permeate recovery WCF [%]	> 80	80
Feed water* / Operating conditions		
Pressure [bar]	2,5-6,0	2,5-6,0
Temperature [°C]	5-25	5-30
Pre-treatment necessary (hardness reduction to 0,1°dH)	✓	✓
Pre-filtration [µm]	100	100
Anti-scaling unit (optional)	✓	✓
Iron + manganese [mg/l]	< 0,1	< 0,1
Salt content TDS (total dissolved solids) [mg/l]	< 1000	< 1000
Salt density index SDI [%/min.]	< 3	< 3
Oxydants [mg/l]	< 0,05	< 0,05
General		
Electric power supply / fuse protection [V/Hz/A]	400/50/10	400/50/10
Electric power consumption [W]	850-3100	1600-2200
Dimensions (WxDxH) [mm]	400 × 510-870 × 840-1510	400 × 510-670 × 1500
Weight [kg]	80 - 185	115 - 185
Hydraulic connection		
Raw water [Inch]	¾" - 1"	¾"
Permeate [mm/Inch]	¾" - 1"	¾"
Concentrate [mm/Inch]	¼"	⅛"
Additional BWT features		
App control via Bluetooth		
Hygienic Full-Fit RO technology*	✓	✓
Serial disinfection and cleaning programme	✓	✓
Programmable interval rinsing against standstill contamination	✓	✓
Communication module (Profinet, Ethernet, Modbus)- Option	✓	✓

*Feed water quality: 15 °C ; TDS ≤500 mg/l



BWT THERO 90 / BWT THERO 90 PRO

BWT BESTAQUA® ROC

14

16

Powerful and space-saving BWT THERO 90/ PRO – BWT's new generation of water purifiers. To be used wherever conventional water filters reach their limits with special membrane filter technology (RO). Easy to monitor via BWT App with BWT THERO 90 PRO version.

Sustainable and highly efficient reverse osmosis with modern app control via Bluetooth (no WLAN, GMS etc. necessary)
Compact device and simple membrane exchange

approx. 90

–

–

120

120

180

> 98,0

> 97,0

> 97,0

approx. 50

approx. 50

approx. 50

1,0–4,0

1,5–4,0

1,5–4,0

5–30

5–30

5–30

max. 20°dH

optional

optional

recommended

recommended

recommended

–

–

–

< 0,05

< 0,05

< 0,05

< 1000

< 500

< 500

< 3

< 3

< 3

< 0,05

< 0,05

< 0,05

110–230/50/10

230/50/10

230/50/10

90

200

260

121 × 264 × 451

144 × 254 × 507

158 × 330 × 532

8,8

10,3

16

M ¾"

M ¾"

M ¾"

¾" JG

8 mm JG

8 mm JG

¾" JG

8 mm JG

8 mm JG

✓ (PRO version only)

✓

✓

–

–

–

–

–

–

–

–

–

–

–

–



PERMAQ® PICO



PERMAQ® PICO VARIO

REVERSE OSMOSIS

INNOVATIVE BWT TECHNOLOGY FOR THE THIRD MILLENNIUM

Compact installation to demineralise non-ferrous and manganese-free, clear drinking and process water. For various purposes. Completely piped and wired internally. With electrical control unit for manual and automatic operation.

Optical information system consisting of: displays for operating hours and permeate quality and flow rates, fault indications and alarm signals, communication via standardised PC interface available. Reverse osmosis module as spiral winding module with PA/d composite low-energy membranes.

PERMAQ® Pico

Ultra-compact operation through integrated dead volume-free connection technology type 10–90, suitable for „under table“ installation, "online" operation possible as an option. Scope of delivery:

Fine mesh filter with 5µm, optional AS dosing unit for direct fitting onto the device connection set.

Recommended accessories: When operating without the softener, a dosage system must be upstream. Together with the online connection kit, a pressure reservoir and profile, a complete system exists for online operation, including pressure measurement and emergency supply. For offline operation, a permeate reservoir and pressure increase are necessary. In accordance with DIN 1988, the system must have a system separator and protective filter connected upstream.

Technical specifications: ambient temperature, min./max. 5/30 °C (41/86 °F). Inflow pressure for feed-in water, min./max 2.5/6 bar (36.2/87 psi), total salt content, max. 1000 ppm, colloid index, max. 3. Consultation necessary, feed water 0 °dH.

PERMAQ® Pico 10 - 90 FT

PERMAQ® Pico	10	20	30	40
Permeate output l/h				
online (at approx. 3.0 bar counterpressure)	140	180	280	450
Permeate output l/h				
offline (free flow)	180	250	440	580
Permeate recovery %		80		
Salt retention rate %		98		
Order no. – Online	13043	13044	13045	13046
Order no. – Offline	13050	13051	13052	13053

PERMAQ® Pico	50	60	70	80	90
Permeate output l/h					
online (at approx. 3.0 bar counterpressure)	900	1.300	1.500	1.750	2.100
Permeate output l/h					
offline (free flow)	1.150	1.620	1.950	2.160	2.520
counterpressure %		80			
Salt retention rate %		98			
Order no. – Online	13047	13048	13049	13222	13223
Order no. – Offline	13054	13055	13056	13220	13221

PERMAQ® Pico Vario

The PERMAQ Pico Vario does not need a membrane pressure tank for permeate and is designed for a direct connection to one or several point-of-use. The pressure tank is history!

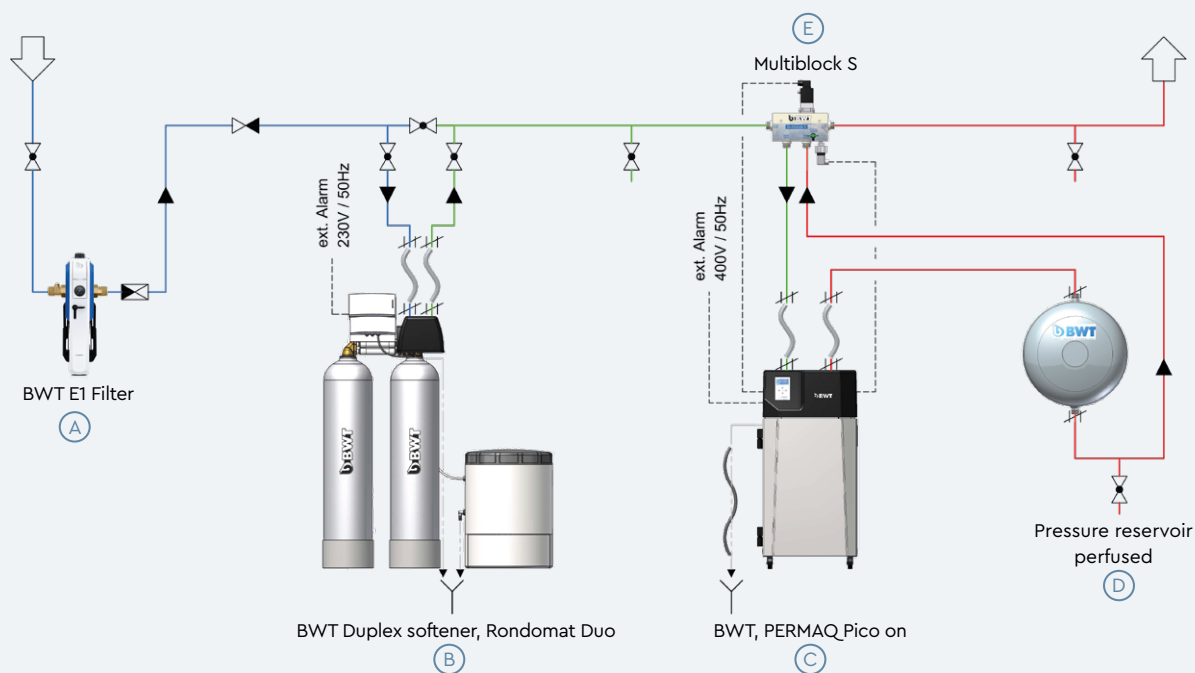
Type*		40	50	60
Min. online output, 3.0 bar counter pressure	l/h	150	250	300
Max. online output, 3.0 bar counter pressure	l/h	450	900	1250
Salt retention rate, min.	%		>98,5	
Permeate yield WCF (Min./Max.)	%		75/80	
Temperature range	°C		5–30	
Order no.		13238	13240	13242
Order no. HR version		13239	13241	13243

*Type 70–90 on request

PERMAQ® PICO online

3

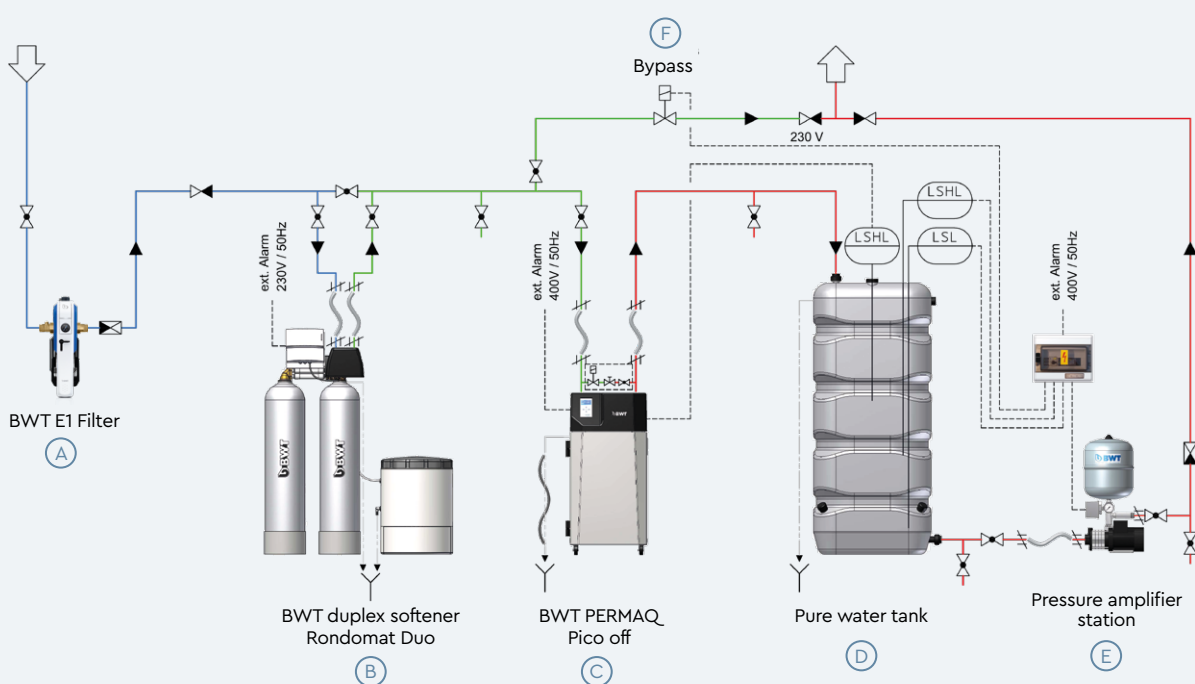
- (A) Filter
- (B) Softener
- (C) Reverse Osmosis (RO)
- (D) Pressure reservoir with integrated bypass
- (E) Multiblock



PERMAQ® PICO offline

4

- (A) Filter
- (B) Softener
- (C) Reverse Osmosis (RO)
- (D) Tank
- (E) Pressure booster
- (F) By-pass valve





PERMEATE STORAGE
CONTAINER

Filter element 5µm

Type	40 – 80	150 – 1000 / 40 K – 80 K	PERMAQ® Pro
Order no.	13971	13999	53986

Filter element 5µm

Type	Profil, Profil AS, PERMAQ_pico 10–40
Order no.	53985

Permeate storage container

For type A 500: sealed PE container, with screw cover, connections for pump suction line and bleeding. Incl. level adjustment. Unit ready for connection with terminal box and 3 floating switches fitted in permeate store, incl. contact for dry running protection for any feed pump connected downstream.

For type A 1100–4000: sealed rectangular container made of PE, with cleaning dome, screw lid with tension seal. Galvanised wrapping to reinforce the container, with connections for bleeding and pump suction line. Incl. level adjustment. Unit ready for connection with terminal box and 3 floating switches fitted in permeate store, incl. contact for dry running protection for any feed pump connected downstream.

Type		A 500	A 1100	A 2000	A 3000	A 4000
Usable volume	m3 (gpm)	0.4 (1.76)	0.95 (1.76)	1.75 (7.7)	2.75 (12.1)	3.7 (16.28)
Length	mm	880	1.500	2.110	2.330	2.540
Width	mm	770	750	750	1.010	1.010
Total height	mm	1.450	1.600	1.900	1.860	2.150
Order no.		13966	13967	13968	13930	13931

Removal fitting for permeate tank

Type	for A 500	for A 1100 – 4000
Order no.	13963	13964

Aquaris RM

Highly effective cleaning substance for RO membranes, biodegradable, 1000 ml

Type	Aquaris RM
Order no.	13940

Aquaris DES

For safe disinfection of RO membranes 50 g

Type	Aquaris DES
Order no.	95319

Aquaris AF 05

Type	2 × 3 kg
Order no.	95319

Colloid index measuring device

Measurement device complete with locking mechanism, pressure reducer and membrane filter **casing for fitting into the RO inlet line, 100 µm membrane filter, tweezers and measuring cylinder.**

Type	Colloid index measuring device
Order no.	13996

BWT THERO 90 and 90 PRO

Ultra compact reverse osmosis system for commercial and domestic applications (under-the-sink). Maximum hygiene – by delivery on demand no storage tank is required. High permeate – yield of 50 % (WCF) and 'Plug and play' concept ready to use – no adjustments and special tools required. Three-step adjustable blending to customize the degree of purity. The BWT THERO 90 Pro is equipped with additional features: **Bluetooth APP**, inlet flow-meter, conductivity and temperature probe, pressure transmitter.

Type		BWT THERO 90	BWT THERO 90 PRO
Nominal capacity (output flow rate)	l/min; (l/h)		2.0 l/min; (90/h)
Salt retention rate	%		> 98
Permeate output/yield (WCF)	%		approx. 50
Feed water pressure	MPa; (bar)		0.1...0.4 MPa ; (1.0 ...4.0 bar)
Feed water / ambient temperature (min.-max.)	°C		5-30 / 5-40
Electrical connection / internal fuse / fuse protection	V/Hz/A	230/50/10	1.25 A (T/slow burn)
Electric power consumption / standby	W		90 / <3
Standard connector		Socket IEC-320	
Feed water, permeate, concentrate connection	inch	¾" M; ¼" JG; ¼" JG	
Dimensions (W x D x H)	mm	121 x 264 x 451	
Weight	kg	10,3	16
Order no.		21100	21117

BWT bestaqua ROC

Ultra compact reverse osmosis system for commercial and domestic applications (under sink). Maximum hygiene – by delivery on demand no storage tank is required. High permeate – yield of 50 % (WCF) and 'Plug and play' concept ready to use – no adjustments and special tools required. Three-step adjustable blending to customize the degree of purity.

Type		bestaqua 14 ROC	bestaqua 16 ROC
Nominal capacity (output flow rate)	l/min; (l/h)	2.0 l/min; (120/h)	3.0 l/min; (180/h)
Salt retention rate	%	> 97	> 97
Permeate output/yield (WCF)	%	approx. 50	approx. 50
Feed water pressure	MPa; (bar)	0.15...0.4 MPa ; (1.5 ...4.0 bar)	0.15...0.4 MPa ; (1.5 ...4.0 bar)
Feed water / ambient temperature (min.-max.)	°C	5-30 / 5-40	5-30 / 5-40
Electrical connection / internal fuse / fuse protection	V/Hz/A	230/50/10 1.25 A (T/slow burn)	240/50/60 1.25 A (T/slow burn)
Electric power consumption / standby	W	200 / <3	260 / <2
Permeate, concentrate connection	inch	¾" M; JG 8 mm	¾" M; JG 8 mm
Dimensions (W x D x H)	mm	144 x 254 x 507	158 x 330 x 532
Weight	kg	10.3	16
Order no.		21039	125255111



BWT THERO 90

- A new generation of RO's – developed by BWT
- Excellent water purifying system with an output of up to 90 l/h for domestic applications
- Easy replacement of cartridge
- Minimum foot print – very compact
- High-grade aluminum housing



BWT BESTAQUA ROC

- Ultra-compact RO purifier with high capacity up to 180 l/h
- Pressure pump included
- Temperature & leakage sensor
- 10 seconds of hygiene rinse
- Conductivity & flow measurement
- App control via bluetooth



BEST WATER TAP

GREAT TASTE EXPERIENCE - SIP BY SIP



BEST WATER TAP

100 PERCENT JOY FOR LIFE

BWT MAKES THE MOST OF YOUR TAP WATER!

Discover our various solutions of our product portfolio:



1 WODA-PURE

The BWT Woda-Pure series turns ordinary tap water into best drinking water. Define your own water quality at your home: water free of particles, odour, chlorine, bacteria, etc. with or Mg^{2+} Mineralizer technology. And choose your BWT cartridge systems for your water issues.



2 BWT THERO

The BWT compact water purifier can be installed under the sink or the counter top in commercial and domestic applications. Maximum hygiene is reached – without using any storage tank. With BWT 3-step technology, you can customize the degree of purity.



3 BESTAQUA ROC

The Ultra-compact RO with a capacity up to 120 l/h – for industrial and domestic under-the-sink applications. Modern high performance membranes ensure technically high value due to (salt retention rate >97 %) with interval flush for optimised hygiene and excellent purified water quality. Further details on page 115.



4 BWT BEWADES BLUE

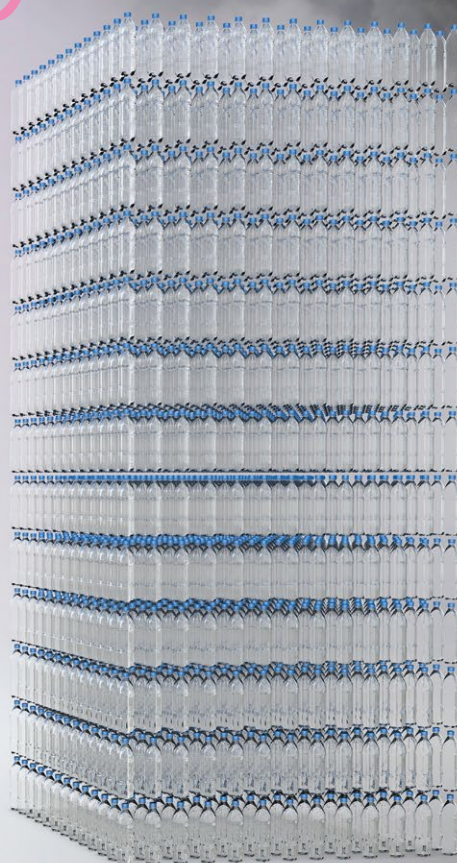
Water free of bacteria and virus – BWT provides the ultimate UV protection for your home installed under your kitchen sink. With the inclusion of a true 254nm Teflon® based UV sensor that continuously monitors the performance of the UV system. Details in chapter BWT PERFECT WATER, page 102.



BWT

CHANGE THE WORLD

sip by sip



BWT
**BOTTLE FREE
ZONE**

WHAT ARE THE ADVANTAGES OF A BOTTLE FREE ZONE? BWT PERFECT WATER



Use local tap water

Local tap water is treated onsite and turned into safe drinking water. Best of all: the great-tasting BWT Magnesium Mineralized Water.



Conservation of resources

No need to buy and transport water in plastic bottles any longer – this saves resources and reduces the CO₂ footprint.



Reduce plastic waste

Less production and use of plastic water bottles reduce the amount of plastic waste drastically – it's a contribution to sustainability



Save money

Avoiding plastic bottles and using local tap water can also save cash – in short, an economic and ecological investment

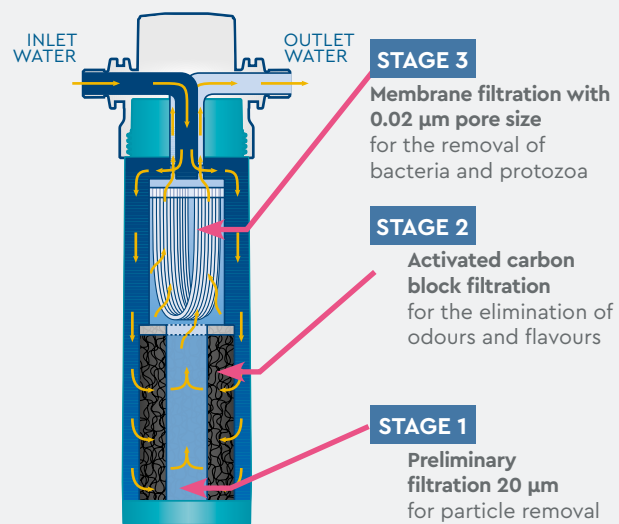
Woda-Pure

MODULAR HYGIENIC SYSTEM

Clean and perfectly hygienic

The new BWT Woda-Pure series turns ordinary tap water into high quality drinking water. Get safe drinking water directly from the tap.

- Pure water - free from particles, odour, chlorine, bacteria, etc.
- Innovative Mg^{2+} Mineralizer technology for perfect coffee and tea
- Flexible solution - proven by experts



Woda- Pure S-CUF: 3-stage water filtration

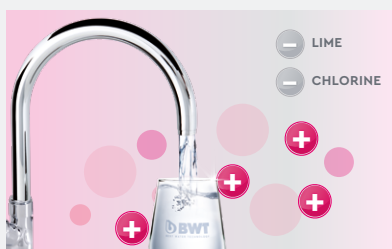


BWT WODA-PURE



1 BACTERIA-FREE DRINKING WATER

BWT Ultra safe filtration technology removes pathogens and eliminates the substances that affect the taste and smell of the water. That saves the vital properties of water and the result is safe, pleasant tasting, pathogen-free drinking water – perfect for you and your loved ones.



2 ENJOY FILTERED WATER WITH MINERALS

Filtration of particles, removing odour, bad taste e.g. chlorine, heavy metals and pathogens are excellent solutions, but there is more. BWT Clear Mineralizer reduces limescale to protect e.g. your coffee machine and ensures well-balanced mineralization for a better taste by the patented Mg^{2+} technology.

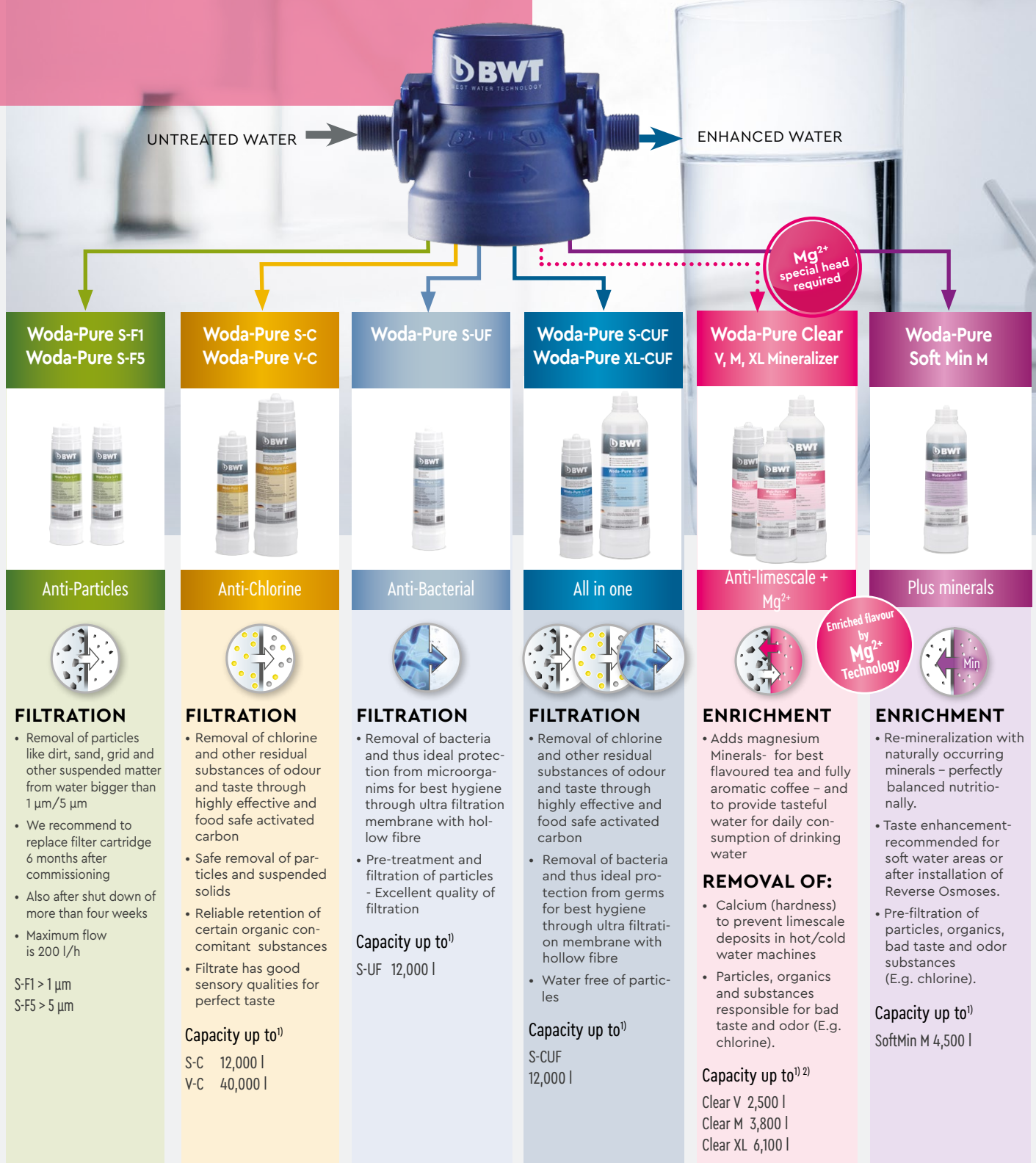


3 MAGNESIUM MINERALIZED WATER

With BWT SoftMin you can always enjoy top quality water, regardless whether your water originates from a reservoir or a reverse osmoses system. The BWT Woda-Pure filter range can be installed easily below the sink to save space. In a combination of 1, 2 or 3 filter cartridges – equivalent to your individual water issues.

Woda-Pure

MODULAR HYGIENIC SYSTEM



- 1) We recommend to replace filter cartridge 6 months after commissioning – independent of the remaining capacity. Also after shut down of more than four weeks. To maximize filter capacity we recommend to use a pre-filter of 5µm or 1µm.
- 2) For Woda-Pure Clear a special filter head/Bypass is required. Capacity depends on water hardness.
- 3) Mineralizer capacity at 6 °dH



Woda-Pure Clear Mineralizer

Perfect for coffee, tea and daily drinking pleasure



Matching filter head just screw in – connect and ready to use!



Installation example

Technical data

Woda-Pure		S-F1		S-F5	S-C		S-UF	S-CUF	V-C	v	MINERALIZER M XL		SOFT MIN M
Overall height without fixture	mm	360						420	420	475	502	475	
Overall height with fixture	mm	385						445	445	500	527	500	
Connection height	mm	310						366	366	421	448	421	
Distance from bottle base	mm	65											
Fitting length	mm	125											
Filter Ø	mm	88						110	110	130	147	130	
Weight filter dry	kg	0.65	0.65	0.80	0.70	0.80	1.80	2.10	2.40	3.80	2.50		
Connecting thread (inlet/outlet)		3/8"											
Capacity up to ^{1) 2) 3)}		-	-	12,000 l	12,000 l	12,000 l	40,000 l	2,500 l	3,800 l	6,100 l	4,500 l		
Maximum flow rate		200 l/h						60 l/h				200 l/h	
Nominal pressure, min. – max.		2 – 8 bar (29–116 psi)											
Flow pressure		> 1.0 bar (14.5 psi)						> 1.2 bar (17.4 psi)				> 1.0 bar (14.5 psi)	
approx. pressure loss at 200 l/h		0.8 bar (11.6 psi)						0.5 bar (7.25 psi)				1.3 bar (18.8 psi)	
Operating temperature water, min. – max.		+4 to +30 °C											
Order No.		12565	12538	12561	12566	12539	12562	12567	12568	12569	12563		
Order No. Filter Head Wodapure		12533	12533	12533	12533	12533	12533	-	-	-	12533		
Order No. Filter Head Magnesium with bypass		-	-	-	-	-	-	12580	12580	12580	-		

- 1) Replacement of filter cartridge at least after 6 months – independent of the remaining capacity. Also after shut down of more than four weeks. To maximize filter capacity we recommend to use a pre-filter of 5 µm or 1 µm.
- 2) For Woda-Pure Clear Mineralizer a special filter head/Bypass is required. Capacity depends on water hardness.
- 3) Mineralizer capacity at 6 °dH

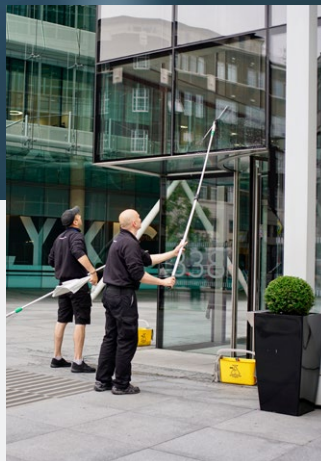
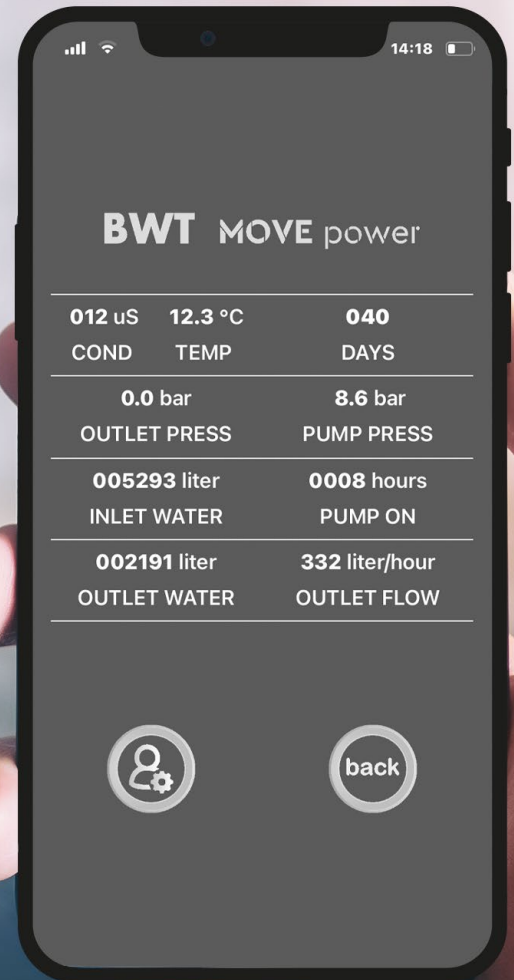
BWT SPECIAL PROGRAMME

HEATING PROTECTION, DESCALING



AQA therm MOVE Power

FOR PERFECTLY PURIFIED
WATER WITHOUT CHEMICALS



The mobile power pack for perfectly purified water

Like no other system the MOVE Power provides purified water, in the most economical and resource-friendly way. Process applications – like modern heating systems – can now work highly efficiently without chemical additives.

Perfectly applicable for various fields of applications – exceeding all requirements. Wherever perfectly purified water needs to be provided. It mobilizes its superpowers.

The Superpower of **MOVE Power**

Whether it's used as a mobile- or stationary solution, it will meet even the highest expectations.



UNIQUE HIGHLIGHTS - EVOLUTION ON THE NEXT LEVEL

1

- Save up to 1000 litre of mixed-bed-resin (for 80 m³ filling water by 20°dH)
- No need to change mixed-bed-resin 40 or 60 times
- Up to 320 -360 l/h
- Capacity of 80,000 litres* with only one set of membranes
- Quick membrane change in less than 60 seconds – no tools required
- 24/7 continuous operation at high ambient temperature
- Compact design, low weight
- Including stair wheels to move everywhere easily

* depending on inlet pressure and water temperature

Check out the **videos**



Commis-
sioning



MOVE
Highlights

2

DOCUMENTATION AS EASY AS A SNAPSHOT

All filling and water parameters are shown in the app and on a single display page:

- Total, daily and membrane litre counter
- Flowrate l/h
- Efficiency indication
- Start and stop pressure
- Real time permeate pressure
- Conductivity/temperature
- Pump pressure
- Service indication
- Manual re-feed
- Variable adjustment of start-stop pressure

Simply capture the systems parameters as a screenshot at any time you want. No password, no account, no transfer errors!



AQA THERM MOVE POWER

- Fully automatically filling process
- 4- colour status LED
- Intuitive user interface
- Only electricity and drain connection is required
- Compact design, low weight



AQA THERM HFB

- Maintenance and filling shut-off
- Backflow preventer BA
- Pressure reducer adjustable up to 1.5–4 bar
- Pressure gauge

AQA therm MOVE Power

Environmentally friendly and economical heating filling system

AQA therm MOVE Power is a mobile reverse osmosis unit for producing low-salt water. The quality of the water produced complies with the standards VDI 2035 and ÖNORM H5195-1. The product is suitable for filling and replenishing heating and cooling systems. The product is equipped with an integrated display and four operator keys. This display gives the user a quick overview of all the product parameters.

Interaction and connectivity

The functionality of the product is enhanced with the BWT RO systems app. The BWT RO systems app provides an overview of the current operating parameters as well as the settings for the operating parameters and service intervals.

You download the BWT RO systems app to your mobile device using the QR code and connect it to the product via Bluetooth. The range of the Bluetooth connection is 2 m.

AQA therm MOVE Power	Unit	
Capacity VE by 20 °dH, approx.	m ³	80
Nominal connection width	DN	20
Pipe water connection	mm	20
Outlet water conversion factor	%	< 50
Power supply	V/Hz	230/50
Dimensions without wheels	mm	355 × 290 × 795
Operating weight, approx.	kg	44
Water temperature, min./max.	°C	5 – 25 °C
Outlet water capacity at 15 °C with free discharge, at start of service life	l/h	320 – 360
Capacity per membrane cartridge	l	40.000
Order no.	19004	

Highest protection

BWT meets all the requirements regarding protection of drinking water. The most important base for a working heating system is the heating water. As a heat exchanger it is the medium, which flows through almost every component. Besides its primary function transporting heating energy from the boiler into the living areas – according to the German standards and DIN 1899-100, EN 14868, and EN 1717, it has to have further important properties:

- It has to protect against deposits and corrosion
- And it's not allowed to contaminate the drinking water supply, when it's used as warm water source.

AQA therm HFB

HEATING-FILLING-BLOCK

Only with this protection can the heating installation be permanently connected – and therefore clean, tidy and also hygienic – to the domestic water installation

AQA therm HFB	
Inlet pressure	max. 10.0 bar
Outlet pressure (preset at 1,5 bar)	adjustable 1,5–4 bar
Kvs-value	0.75 m ³ /h
Installation	horizontal
Operation temperature	max. 65 °C
Manometer connection	¼"
Drain connectoin	DN 40
Connection thread inlet	½" male thread (¾" male thread without fitting)
Connection thread outlet	½" male thread (¾" male thread without fitting)
Minimum distance to wall	80 mm
Order no.	51955

AQA therm HES

HEATING-WATER-STATION

AQA therm HES	
Inlet pressure	max. 4,0 bar
Dimension	1/2"
Connection thread inlet	3/4" swivel screw (3/4" male thread without fitting)
Inlet water	max. 30 °C
Device temperature with shut-off ball valve (closed) through temperature transfer from the heating system	max. 50 °C
Ambient temperature	max. 40 °C
Connection thread outlet	3/4" male thread
Order no.	51094

AQA therm HRC

HARDNESS-REDUCING-CARTRIDGE

for HES: Small: refill, Large: fill and refill

AQA therm HRC	Small	Large
Capacity	3 m³ x °dH	14 m³ x °dH
Max. flow rate	3 l/min	5 l/min
Order no.	12523	12524

AQA therm SRC

SALT-REDUCING-CARTRIDGE

Salt reducing cartridge for HES (mixed bed resin) – **fill and refill**

AQA therm SRC	Large	X-Large
Capacity	240 l at 20 °dH	480 l at 20 °dH
Max. flow rate	5 l/min	15 l/min
Order no.	12526	12510

AQA therm Plus

The one litre cartridge **AQA therm Plus**: increases the pH-value in boiler water

AQA therm Plus 1L*	
Order no.	18174E

* packing unit: 6 Pcs.

AQA therm SLA

SLUDGE AND AIR SEPARATOR

the safe BWT sludge and air separator for every heating system – fullfills highest EU standards. Recommended for pipes < DN 50

- Vertical and horizontal installation
- Lamella design ensures best separation rates without the risk of clogged filter element
- Magnet insert to remove ferromagnetic iron sludge
- float in hexagonal shape for increased air flow

AQA therm SLA		
Nominal connection width	DN	25
Nominal pressure (PN)/max. operating pressure	bar	10/10
Flow rate max.	m³/h	2,12
Operating temperature max.	°C	90
Installation lenght with/without threads	mm	184/100
Total height incl. insulation	mm	333
Order no.	50217	



AQA THERM HES

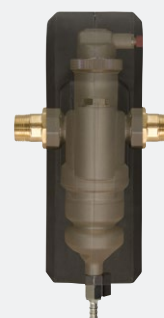
- Standard-compliant filling and refilling of heating systems
- smart setup and operation
- Alarm function for cartridge change
- Display with all important Information



AQA THERM HRC & SRC



AQA THERM PLUS



AQA THERM SLA

- even the smallest sludge particles are removed from the heating circuit
- The sludge separator can be emptied during system operation
- no shut-off valves necessary



SEK 28



KALKEX-MOBIL



LIMESCALE SOLVENT P

- Environmentally compatible due to the new powder concept
- Up to 50 % less work due to high processing temperatures
- Easy handling through practical



NEUTRA P

- For the neutralisation of limescale solvent P
- Raises the pH-value
- Is easy to process

Rapid descaling units

- for removal of scale in warm water units, boilers, flow heaters and hot water units
- intensive descaling by means of circulation of the solvent
- acid-proof version
- solvent container made of corrosion proof plastic

Rapid descaling unit SEK 28

Integrated holders for hoses and cables. Hoses with 3/4" connection, 2 double nipple, reduction connection equipment (male thread 3/4", female thread 1/2" and 3/8"). On/Off-switch. With SEK test box.

Type SEK 28

Container content	20 l (5.3 gal)
Pump head (max.)	8 mWS
Circulation rate (max.)	1500 l/h (6.6 gpm)
Temperature resistance	up to 60 °C (140 °F)
Electrical connection	230 V/50 Hz

Order no. 60008

Portable rapid descaling unit KalkEx-Mobil

Complete with armoured hoses, with 3/4" connection and SEK test box incl. connection-set for KalkEx-Mobil. 2 double nipples/reduction connection equipment (male thread 3/4", female thread 1/2" and 3/8"). Discharge for solvent container.

Type Kalk Ex-Mobil

Container content	40 l (10.6 gal)
Pump head (max.)	15 m WS
Circulation rate (max.)	2100 l/h (9.3 gpm)
Temperature resistance	up to 60 °C (140 °F)
Electrical connection	230 V/50 Hz

Order no. 60007

LIMESCALE SOLVENT IN POWDERED FORM

Limescale solvent P and Neutra P are now available in powder form

Through small portioned packages, heavy containers and difficult filling have become a thing of the past

Limescale solvent P

for the reliable removal of limescale in instantaneous water heaters, heat exchangers, boilers, pipes, coffee machines, etc. 5 bags of 1 kg (powder)

Type Limescale solvent P

Order no. 60978E

Neutra P

for the neutralisation of used solvent, 5 bags of 300 g (powder)

Type Neutra P

Order no. 60979E

Rapid descaling Solvents and neutralising agents

- concentrated chemicals for scale and rust removal
- rapid dissolving of scale and rust encrustations
- recommended by leading manufacturers
- complete programme

SOLVENTS AND NEUTRALISING AGENTS

Pallet order size (800 × 1200 mm)	28
Packaging unit	20 kg container

FFW / ZN – FOR DRINKING WATER

Material resistant according to VDI 2035
Descaling capacity: 2.5 kg FFW/ZN dissolve 1 kg of scale

Type FFW/ZN	
Order no.	60977

Limescale solvent

Capacity exhaustion indicated optically by changing colour. Descaling capacity: 1 kg limescale solvent dissolves 1 kg of scale

Type Limescale solvent	
Order no.	60999

Limescale solvent Ecosafe

Descaling capacity: 1 kg limescale solvent dissolves 1 kg of scale

Type Limescale solvent	
Order no.	60971

Limescale solvent VA

For cleaning of stainless steel installations
Descaling capacity: 1.1 kg limescale solvent VA dissolves 1 kg of scale

Type Limescale solvent	
Order no.	60980

NAW

For post-treatment and passivation of metal surfaces after chemical cleaning

Type Limescale solvent	
Order no.	60993

Neutra

For neutralisation of used solvents

Type Limescale solvent	
Order no.	60991



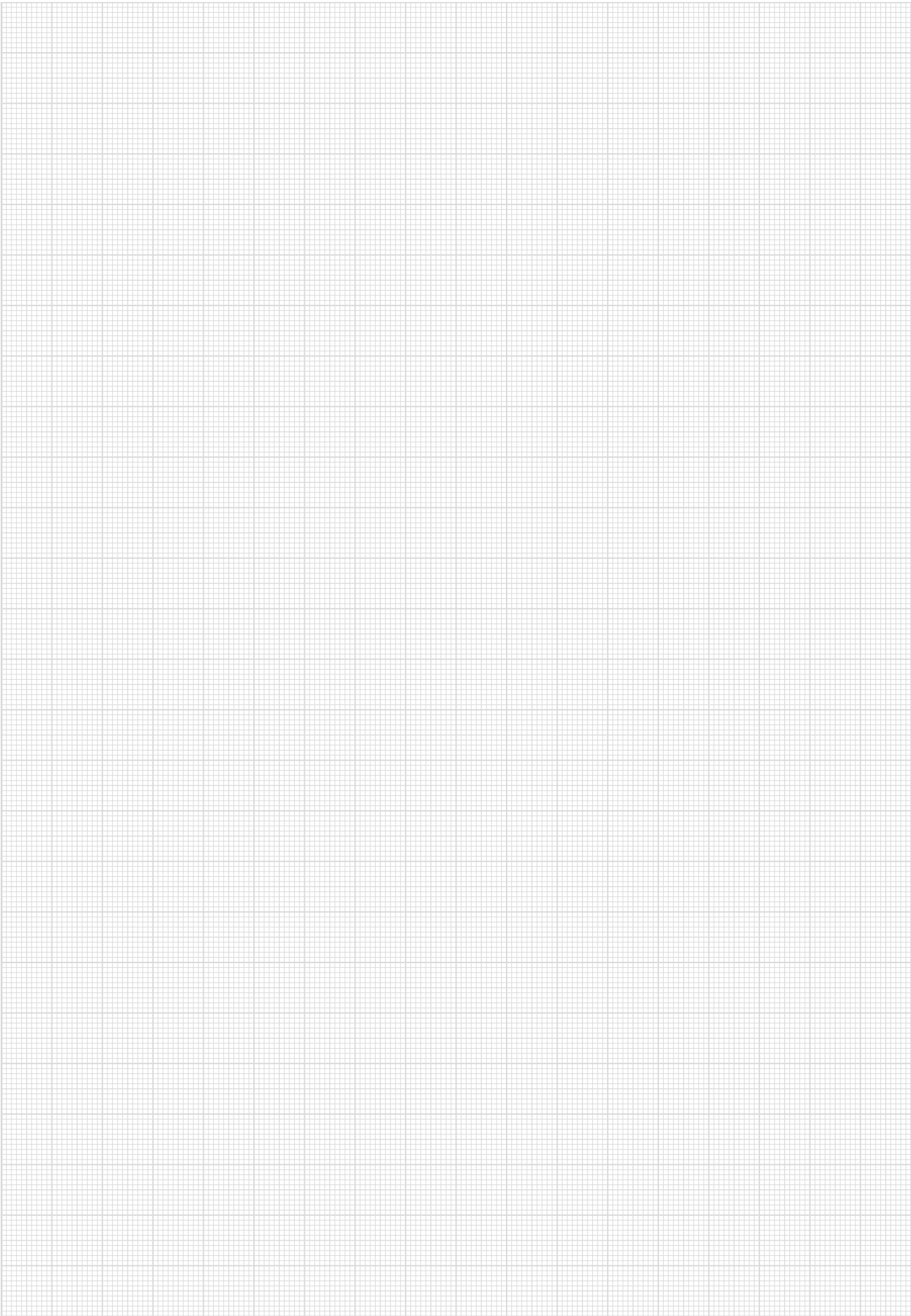
LIMESCALE SOLVENT

- Environmentally 'Green product'
- Easily bio-degradable
- No harmful vapours or gases
- Sustainable product Eco-Safe limescale solvent

SELECTION TABLE FOR SOLVENTS

Application field	solvents				solvents	passivation
Material	for the removal of scale, and inorganic layers (except rust).				for the removal of scale, rust and inorganic layers.	after treatment of metal surfaces
Product description	Limescale solvent P up to 60°C	Limescale solvent	Limescale solvent VA	Limescale solvent Ecosafe	FFW / ZN	NAW
Grey cast iron	X	X	–	X	X	X
Steel, un-alloyed and low-alloy steel	X	X	–	X	X	X
Copper and copper alloys (brass and other nonferrous metals)	X	X	–	X	X	X
Enamelled steel (acid-resisting)	X	X	–	X	X	X
Tin coated materials	X	X	–	X	X	X
Galvanized steel according to DIN	X	X	–	X	X	X
Aluminium	X	X	–	X	–	–
Stainless steel	X	X	X	X	–	X
Polysulfon RO-membranes	X	–	–	–	–	–
UV units	X	–	–	X	–	–
Drinking water application	X	X	X	X	X	X

The used solvents can be neutralised with Neutra or Neutra P.



General Terms of Delivery and Payment

(Status August 2021)

1. General

These terms and conditions apply to all our deliveries and services to entrepreneurs and all clients. Our deliveries shall be made exclusively on the basis of these terms and conditions. The purchasing terms of the party ordering are non-binding for the supplier, even if they are used as the basis for the order and the supplier has not expressly opposed them. Deviations and Collateral agreements are only effective if they have been confirmed in writing or in text form (as of sect. 126 b German Civil Code). The contract will remain binding, even if individual items contained in these terms and conditions become invalid. Printing, spelling, calculation and obvious errors are not binding on the supplier.

2. Conclusion of the Contract

Orders are only regarded as accepted once they have been acknowledged by the supplier or if they are carried out immediately. Offers made by the supplier are always subject to confirmation unless otherwise agreed in writing. Samples, models, tools, drawings or other documentation placed by the supplier at the purchaser's disposal are to be treated as confidential and remain the property of the supplier. It is prohibited to pass them on or to give access to them to third parties. The supplier retains copyright to samples, models, tools, drawings or other documentation, all of which are to be returned to the supplier without specific request following completion of the order. The purchaser is not permitted to use the samples, models, tools, drawings or other documentation placed by the supplier at the purchaser's disposal either privately or for third-party purposes. In regard to documentation which the party ordering makes available to the supplier, the party ordering carries full responsibility for ensuring that no external property rights are infringed.

3. Scope of Delivery

The scope of a delivery and service is determined conclusively in the supplier's acknowledgement of order. Any supplements, amendments and the like require the written confirmation of the supplier. Dimensions, weights, illustrations and drawings of water treatment plants are only binding for the completion of the order if this has been expressly confirmed in writing. Any advice provided by our internal and field staff is given to the best of their knowledge in line with the present state of the art and is based on normal operating conditions. Should any operating conditions – such as water properties – change in the period between receipt of our offer and delivery of the product, the party ordering is obliged to notify us to this effect.

4. Delivery Period

Our usual delivery and performance deadlines or those agreed with the customer shall apply. Binding deadlines require special agreement as binding. The deadline for delivery and completion of services (delivery period) refers to completion at the factory and begins as soon as all details of the job to be carried out have been clarified and both parties agree to all of the terms of the contract. Compliance with it presupposes that all of the contractual obligations of the party ordering have been fulfilled in a timely manner, in particular the payment conditions. If these prerequisites are not satisfied in a timely manner, the deadline shall be extended accordingly. The plea of non-performance of the contract remains reserved. An appropriate extension of the deadline must also be granted if non-compliance with the deadline can be proven to have been caused by mobilization, acts of war, riots, strikes, lock-outs or the occurrence of any unforeseen impediments beyond the intentions of the supplier, even if they occur during a delay in delivery, such as interruptions of operations due to epidemics or pandemics or interruptions of operations or supply chains due to official statutory orders. The same applies if official authorization or any other approval or information from the party ordering required for completion of the delivery is not received in time, or if the order is subsequently changed.

If the supplier is behind schedule through his own fault, the party ordering can claim for damages amounting to a maximum of 0.5% of the value of the gross order value for each full week of delay up to a maximum of 5% of the value of the gross order value, providing the party ordering can prove that damage has been incurred by him as a result of the delay. All other or more extensive damage claims on the part of the party ordering will be excluded in all cases of delayed delivery, even after a further delivery deadline has expired, unless the delay is due to intent or gross negligence on the part of the supplier.

The right of the party ordering to withdraw from the contract after the lapse of a further delivery deadline is not affected by this. If there is a delay in delivery at the request of the party ordering, a storage fee amounting to 1% of the invoice sum will be charged (for interest, storage costs and insurance) for every month commenced from the point in time at which notification of readiness for dispatch was given.

Consumers are entitled to prove that no damage was incurred or that the damage was less than the estimated flat rate of 1% of the invoice amount for each month or part thereof.

5. Passing of Risk

The risk passes to the party ordering upon shipment ex works, even if delivery free of charge has been agreed. If there is a delay in shipment attributable to the party ordering, the risk passes to the party ordering on the date of readiness for dispatch.

This does not apply if the customer is a consumer.

6. Shipping

The transportation route and transport type are determined by the supplier.

7. Default in Acceptance

If the subject of the contract is made available and not accepted in accordance with the terms of the contract, the supplier can claim for damages instead of completing the contract after granting an appropriate period of grace.

In the event of the return or non-acceptance by the party ordering, we shall charge entrepreneurs a flat-rate sum of 15% of the order value to cover administrative expenses and lost profit in addition to the costs incurred, the value of which must be recorded precisely by the supplier.

If the party ordering exchanges mass-produced articles or other products included in our range for goods of equal value, we shall charge 5% on the purchase price for the use of the supplier's services.

If any other goods (in particular customized goods) are exchanged, the party ordering must carry the full extent of any loss incurred in the reutilization process after offsetting the flat-rate charge.

Consumers are entitled to prove that no loss has been incurred or that the loss is less than the estimated flat rate.

8. Warranty and Liability for Defects

The statutory warranty regulations and warranty period shall apply vis-à-vis consumers.

In all other respects, the following conditions shall apply:

The supplier guarantees that all parts or services which during the statutory or agreed warranty period become unusable or considerably impaired in their usability as a result of circumstances occurring prior to the passing of risk or attributable to the supplier, shall at his choice either be repaired, resupplied or carried out again free of charge.

Claims for defects shall be subject to the fulfillment of the obligation to inspect the goods and to give notice of defects according to § 377 HGB (German Commercial Code).

The supplier must be given written notification of such defects without delay. An opportunity to review the defective goods must be conceded to the supplier. The obligation to give notice of defects does not apply to consumers.

The party ordering must give the supplier adequate time and opportunity to carry out such repair, delivery or service. If the supplier allows an appropriate period of time granted for this purpose to elapse without correcting the defects, or if he refuses to do so without justification, the party ordering has the right either to withdraw from the contract or to reduce the agreed remuneration sum, as he chooses. Defects caused by natural wear and tear and damage occurring after the passing of risk as a result of incorrect or negligent handling, excessive stress or unsuitable operating materials are excluded from the warranty and liability terms.

Any damage caused by alteration or maintenance work performed by the party ordering or an unauthorized third party is not covered by the warranty.

The limitation period for claims for defects against entrepreneurs shall be 12 months. This shortening of the limitation period shall not apply to damages resulting from injury to life, body or health which are based on a negligent breach of duty by the Supplier or on an intentional or negligent breach of duty by a legal representative or vicarious agent of the Supplier. Furthermore, it does not apply to damages based on a grossly negligent breach of duty by the Supplier or a grossly negligent breach of duty by a legal representative or vicarious agent of the Supplier.

No other claims may be asserted by the party ordering against the supplier and his vicarious agents, in particular as regards compensation for damage not incurred on the delivered item itself. The above listed restrictions to liability do not apply in the event of intent, gross negligence or the absence of warranted properties as well as in cases of injury to life, body or health. If the supplier negligently infringes an obligation essential to the contract, his obligation to compensate for personal injury and damage to property shall be limited to the sum covered by the supplier's liability insurance. The supplier is willing on request to inform the party ordering of the insurance sum covered.

None of the limitations and exclusions of the rights of the purchaser contained in paragraphs 8 and 9 shall apply to the rights of the purchaser contained in sect. 439 (3) German Civil Code (reimbursement of cost of labor and materials necessary for replacement) nor to purchaser's recourse to the seller in cases of resale of the goods (sect. 445a German Civil Code).

9. Liability

Any liability for compensation in excess of that listed in the last paragraph of item 8 is excluded, irrespective of the legal nature of the asserted claim.

The above arrangement does not apply to claims under the Product Liability Act.

The exclusion of liability mentioned in item 8 and in item 9 of these terms also applies accordingly to claims arising from information obtained before or after the signing of the contract through consultation or from printed publications, or from the infringement of accessory contractual obligations.

Inasmuch as the liability of the supplier is excluded or limited, this shall also apply to the personal liability of the supplier's staff, employees, co-workers, representatives and vicarious agents.

10. Prices and Payment

Where no information to the contrary is given, all prices are subject to value-added tax at the legal rate valid on the date of the invoice.

Unless another agreement has been reached, all prices are ex works and do not include packaging. Prices are quoted in Euro.

Unless otherwise agreed, payments are to be made free supplier's payment office within 10 days of the invoice date with a 2% discount, or within 30 days with payment of the full net sum.

Bills of exchange and cheques will only be accepted on account pending full discharge and the party ordering must carry the costs of discounting, collecting and cashing.

The party ordering can only offset claims which are undisputed or have been established by process of law. In addition to this, he is only entitled to exercise the right to withhold payment if his counterclaim is based on the same contract. Sales representatives and customer service technicians are not entitled to collect unless they have been given express written authorization to do so.

11. Retention of Title

The supplier retains the ownership rights to the delivered article vis-à-vis entrepreneurs until receipt of all payments – including interest and the costs of any legal action – due on the basis of the delivery contract and the entire business connection. Towards consumers the ownership rights to the delivery item shall be reserved until receipt of all payments under the delivery contract.

The party ordering is authorized to sell the delivered goods in the proper course of business. In the event of resale, the claim of the party ordering is transferred to the supplier upon conclusion of the resale contract to the amount of any pending claims the supplier may still have, even if the party ordering has altered, processed or installed the delivered goods. In the event that the delivered goods have been processed, this will apply to the value of the goods delivered by the supplier in proportion to that of the finished product. The party ordering may not pledge the delivered article or assign it by way of security and must store and insure it in the proper manner. The party ordering must notify the supplier without delay in the event of seizure, confiscation or any other disposition by a third party.

The supplier will release securities at the request of the party ordering inasmuch as their value exceeds the value of the secured claims by more than 20%.

12. Impossibility, Adaptation of Contract

Should it become impossible for the supplier to carry out the service to which he is committed due to his own fault, the party ordering is entitled to claim for damage and/or the reimbursement of expenses up to a maximum of 10% of the value of that part of the delivery or service which cannot be put into proper and useful operation as a result of the impossibility. This restriction of liability does not apply in the event of intent or gross negligence. The right of the party ordering to withdraw from the contract is not affected by this.

13. Place of Jurisdiction, applicable law

If the party ordering is a merchant, a legal entity under public law or a special fund under public law, the place of jurisdiction for all disputes arising directly or indirectly from the contractual relationship shall be the court responsible for the locality in which the supplier has his head office. The supplier is also entitled to bring action in the locality in which the party ordering has his head office. This does not apply to consumers.

German Law shall apply to all contractual matters. The United Nations Convention on the International Sale of Goods (CISG) is excluded.

14. Foreign Transactions

These terms and conditions only apply if no special export business terms have been agreed.

The German version of any agreement and of these Terms and Conditions shall prevail.

Special Conditions for After-Sales Service, On-Site Assembly and Repairs

1. General

Provided that no agreement to the contrary has been reached, the provisions of the above General Terms of Delivery and Payment shall apply.

Acceptance of the order can also be made through implementation thereof.

2. Cost Estimates

Cost estimates are only binding if they are submitted in writing and are marked as binding.

3. Invoice and Payment

Work hours, utilized parts, materials and refillable active ingredients will be charged separately unless a flat-rate price was agreed in writing when the order was placed. Inasmuch as they are applicable, our customer service and spare parts pricelists shall apply.

Immediately following completion of the work and receipt of the invoice payment is to be made net cash directly to us or to our authorized agents, providing they have written authorization to collect.

4. Acceptance

The work carried out by us is accepted and acknowledged by the customer by means of his signature on the customer service order or corresponding form.

If no such acceptance is made, our work will be regarded as having been accepted on the 12th working day after written notification of the completion of the work has been given or when the system is put into use, whichever date is earlier.

5. Replaced Parts

If no agreement to the contrary was reached when placing the order, replaced parts become our property.

BWT Wassertechnik GmbH, 69198 Schriesheim, Germany

BWT CORADES

THE FIRST COSMETIC HAND
DESINFECTION



...at home, at work or on the go

New hygiene routines have been established in our everyday lives, we disinfect our hands several times a day. However, conventional products massively attack the protective layer of the skin, it quickly becomes dry and rough - especially with frequent use. An unpleasant, pungent smell is also left behind. Let's change that today:



APPROVED DISINFECTION

- + Without water or soap, without rinsing. Rub 4 ml of gel in your hands for 60 seconds to obtain 99.99 % efficacy.
- + Cosmetic skincare with Panthenol Provitamin B5
- + Long-lasting fragrance, similar to a breeze of fresh sea air.



BWT Wassertechnik GmbH
Industriestrasse 7, 69198 Schriesheim, Germany
T: +49 6203 7373 | M: export@bwt.de

