

Brand : KALDEWEI, Germany
 Name : Puro 3164 Washbasin Wall-mounted
 Item Code : 9014 0601 3001
 Designer : Anke Solomon
 Color / Finish: Alpine White
 Dimensions : Overall (LxWxH in cm)
 60 x 46 x 12.3cm

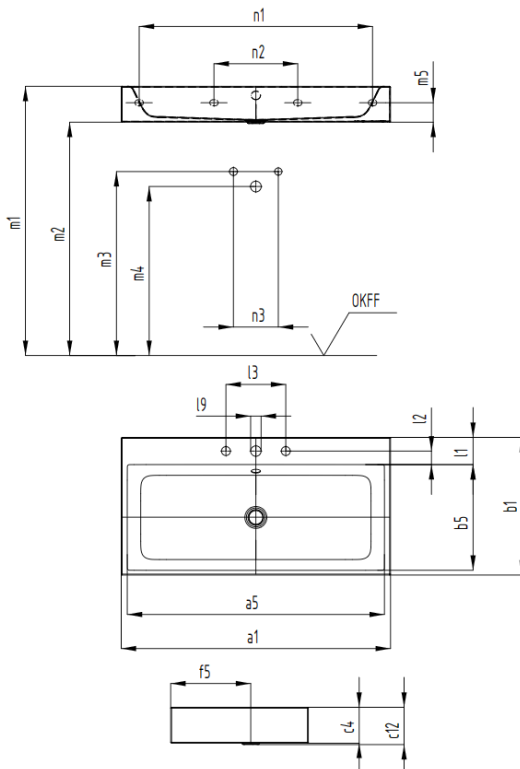


Product info:

- With overflow
- With tap platform
- Kaldewei Steel Enamel

Add-on:

- 1 x 695100.0000 fixing bolts



Model No.	3164	
External length	a1	600
Internal length	a5	560
External width	b1	460
Internal width	b5	345
Height of rim	c4	120
Distance basin surface to bottom edge of waste hole	c12	125
Distance outer edge to centre of waste hole	f5	267,5
Depth of tap deck	l1	90,5
Distance tap holes to edge	l2	45
Distance of tap holes	l3	200
Distance of tap holes	l4	-
Diameter of centre tap hole	l9	35
Distance FF*1 to top edge of basin surface	m1	820-850
Distance FF*1 to bottom edge (washbasin)	m2	700-730
Distance FF*1 to centre of drain hole wall connection	m4	520-580
Distance bottom edge to centre of fixing hole	m5	65
Outer distance of fixing holes	n1	-
Inner distance of fixing holes	n2	280
Distance hot/cold water inlet	n3	80-150
Weight of the enamelled washbasin in kg		12,6

Flushing of pipe must be done before fittings are installed. Failure to do so voids the warranty.

Follow cleaning instructions and avoid using any harmful chemicals.

All information is for reference only. Installation shall always be based on the specs provided with actual delivered items.

For more info, visit www.kuysen.com