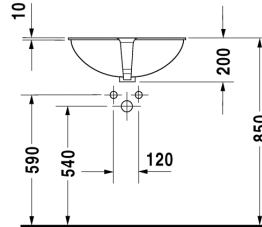
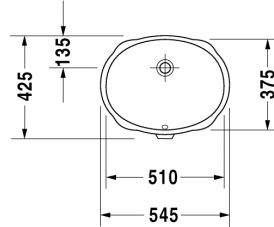


Vanity basin Santosa # 046651..00

|< 510 mm >|

Vanity Basins



Vanity basin Santosa	Dimension	Weight	Order number
undercounter basin, with overflow, without tap platform, fixings for installation in wooden consoles included, 510 mm Additional information Available in White – 00, Pergamon – 47			
Colors			
00 White Alpin, 47 Pergamon			
Variant			
510 mm ☒	510 x 375 mm	8,000 kg	046651..00
Accessories			
Fixing			
Fixing Set	-	0,020 kg	005037

All drawings contain the necessary measurements which are subject to standard tolerances. They are stated in mm and are non-binding. Exact measurements, in particular for customised installation scenarios, can only be taken from the finished ceramic piece.

REMINDER:	Pipe flushing must be done before faucets are installed. Failure to do so voids the warranty.
	Do not use cleaners containing abrasive cleansers, ammonia, bleach, acids, waxes, alcohol, solvents or other products not recommended for chrome.
	All information is for reference only, installation shall always be based on the actual product delivered.