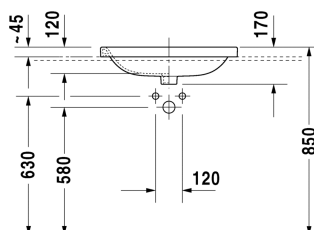
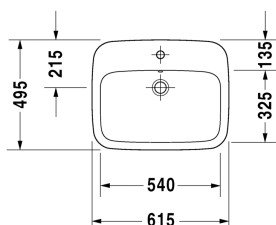


## DuraStyle Vanity basin # 0374620000

| < 615 millimetre > |



Vanity basin	Dimension	Weight	Order number
countertop basin, with overflow, with tap platform, 615 millimetre			
<b>Colors</b>			
00 White Alpin			
<b>Variant</b>			
●	615 x 495 millimetre	12.500 kilogram	0374620000
Sanitary ceramics with the special WonderGliss surface finish will remain clean and attractive-looking for a long time to come. When ordering WonderGliss please add a "1" as eleventh digit to the model number.			
<b>Suitable products</b>			
Vanity unit wall-mounted 1 pull-out compartment, countertop including one cut-out, for 1 vanity basin central including cut-out for siphon and siphon cover, 800 x 550 millimetre	800 x 550 millimetre		KT6794
Vanity unit wall-mounted 1 pull-out compartment, countertop including one cut-out, for 1 vanity basin central including cut-out for siphon and siphon cover, 1000 x 550 millimetre	1000 x 550 millimetre		KT6795
Vanity unit wall-mounted 1 pull-out compartment, countertop including one cut-out, for 1 vanity basin central including cut-out for siphon and siphon cover, 1200 x 550 millimetre	1200 x 550 millimetre		KT6796
Vanity unit wall-mounted 2 pull-out compartments, 1 countertop with one cut-out or two cut-outs, for 1 or 2 vanity basins each including cut-out for siphon and siphon cover, 1400 x 550 millimetre	1400 x 550 millimetre		KT6797 B/L/R
Vanity unit wall-mounted 2 drawers, upper drawer including cut-out for siphon and siphon cover, countertop including one cut-out, for 1 vanity basin central, 800 x 550 millimetre	800 x 550 millimetre		KT6754
Vanity unit wall-mounted 2 drawers, upper drawer including cut-out for siphon and siphon cover, countertop including one cut-out, for 1 vanity basin central, 1000 x 550 millimetre	1000 x 550 millimetre		KT6755
Vanity unit wall-mounted 2 drawers, upper drawer including cut-out for siphon and siphon cover, countertop including one cut-out, for 1 vanity basin central, 1200 x 550 millimetre	1200 x 550 millimetre		KT6756

**DuraStyle Vanity basin # 0374620000**

|&lt; 615 millimetre &gt;|

Vanity unit wall-mounted 4 drawers, 1 countertop with one cut-out or two cut-outs, drawer beneath basin including cut-out for siphon and siphon cover, for 1 or 2 vanity basin(s), 1400 x 550 millimetre	1400 x 550 millimetre	KT6757 B/L/R
Console including drawer for vanity basin countertop including one cut-out, 1 drawer beneath console, 1 cover beneath console, 3 console supports, 1500 x 565 millimetre	1500 x 565 millimetre	DL6891 L/R
Console including drawer for vanity basin countertop including one cut-out, 1 drawer beneath console, 1 cover beneath console, 3 console supports, 1800 x 565 millimetre	1800 x 565 millimetre	DL6892 L/R
Console including drawer for wash bowls or semi-recessed washbasin 1 countertop including one central cut-out, 1 drawer beneath console, 2 console supports, 800 x 565 millimetre	800 x 565 millimetre	DL6788
Console including drawer for wash bowls or semi-recessed washbasin 1 countertop including one central cut-out, 1 drawer beneath console, 2 console supports, 1000 x 565 millimetre	1000 x 565 millimetre	DL6789
Console including drawer for wash bowls or semi-recessed washbasin 1 countertop including one central cut-out, 1 drawer beneath console, 3 console supports, 1200 x 565 millimetre	1200 x 565 millimetre	DL6790
Console including drawer for wash bowls or semi-recessed washbasin countertop including one cut-out, 2 drawers beneath console, 3 console supports, 1500 x 565 millimetre	1500 x 565 millimetre	DL6791 L/R
Console including drawer for wash bowls or semi-recessed washbasin countertop including one cut-out, 2 drawers beneath console, 3 console supports, 1800 x 565 millimetre	1800 x 565 millimetre	DL6792 L/R
Vanity unit for console 2 drawers, upper drawer including cut-out for siphon and siphon cover, 800 x 565 millimetre	800 x 565 millimetre	DL6799
Vanity unit for console 1 pull-out compartment, compartment consists of glass dividers and 2 boxes (small/large), 800 x 548 millimetre	800 x 548 millimetre	XL6713
Vanity unit for console 1 pull-out compartment, compartment consists of glass dividers and 2 boxes (small/large), 1000 x 548 millimetre	1000 x 548 millimetre	XL6715
Vanity unit for console 2 drawers, upper drawer including cut-out for siphon and siphon cover, 800 x 548 millimetre	800 x 548 millimetre	H26301
Vanity unit for console 2 drawers, upper drawer including cut-out for siphon and siphon cover, 1000 x 548 millimetre	1000 x 548 millimetre	H26302
Vanity unit for console 2 drawers, upper drawer including cut-out for siphon and siphon cover, 1000 x 565 millimetre	1000 x 565 millimetre	DL6798
Vanity unit for console 1 pull-out compartment, 820 x 477 millimetre	820 x 477 millimetre	LC6812
Vanity unit for console 1 pull-out compartment, 1020 x 477 millimetre	1020 x 477 millimetre	LC6813
Vanity unit for console with 2 drawers, upper drawer including cut-out for siphon and siphon cover, 820 x 477 millimetre	820 x 477 millimetre	LC6822
Vanity unit for console with 2 drawers, upper drawer including cut-out for siphon and siphon cover, 1020 x 477 millimetre	1020 x 477 millimetre	LC6823
Vanity unit for console 1 pull-out compartment, 820 x 547 millimetre	820 x 547 millimetre	LC6828

Vanity unit for console 1 pull-out compartment, 1020 x 547 millimetre	1020 x 547 millimetre	LC6829
Vanity unit for console with 2 drawers, upper drawer including cut-out for siphon and siphon cover, 820 x 547 millimetre	820 x 547 millimetre	LC6838
Vanity unit for console with 2 drawers, upper drawer including cut-out for siphon and siphon cover, 1020 x 547 millimetre	1020 x 547 millimetre	LC6839
Console for above counter basin and countertop basin 1 console with one cut-out, Width min. see ordering information, Width max 2000 mm, price per section of 100 mm, basic price till 800 mm, 550 millimetre	550 millimetre	LC096C
Console for above counter basin and countertop basin 1 console with two cut-outs, Width min. see ordering information, Width max 2000 mm, price per section of 100 mm, basic price till 800 mm, 550 millimetre	550 millimetre	LC097C

*All drawings contain the necessary measurements which are subject to standard tolerances. They are stated in mm and are non-binding. Exact measurements, in particular for customised installation scenarios, can only be taken from the finished ceramic piece.*

<b>REMINDER:</b>	<b>Pipe flushing must be done before faucets are installed. Failure to do so voids the warranty.</b>
	Do not use cleaners containing abrasive cleansers, ammonia, bleach, acids, waxes, alcohol, solvents or other products not recommended for chrome.
	All information is for reference only, installation shall always be based on the actual product delivered.