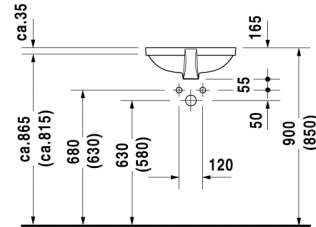
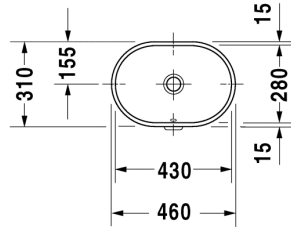


Vanity basin # 033643..00

|< 430 mm >|

Bathroom_Foster



Vanity basin	Dimension	Weight	Order number
undercounter basin, with overflow, without tap platform, fixings included, 430 mm Additional information Measurements of undercounter models represent interior measurements			
Colors			
00 White Alpin			
Variant			
430 mm	430 x 280 mm	5,400 kg	033643..00
Accessories			
Design Siphon	-	1,500 kg	005036
Design angle valve	1/2" mm	0,500 kg	003045
Fixing			
Fixing Set	-	0,200 kg	005028

All drawings contain the necessary measurements which are subject to standard tolerances. They are stated in mm and are non-binding. Exact measurements, in particular for customised installation scenarios, can only be taken from the finished ceramic piece.

REMINDER:	Pipe flushing must be done before faucets are installed. Failure to do so voids the warranty.
	Do not use cleaners containing abrasive cleansers, ammonia, bleach, acids, waxes, alcohol, solvents or other products not recommended for chrome.
	All information is for reference only, installation shall always be based on the actual product delivered.