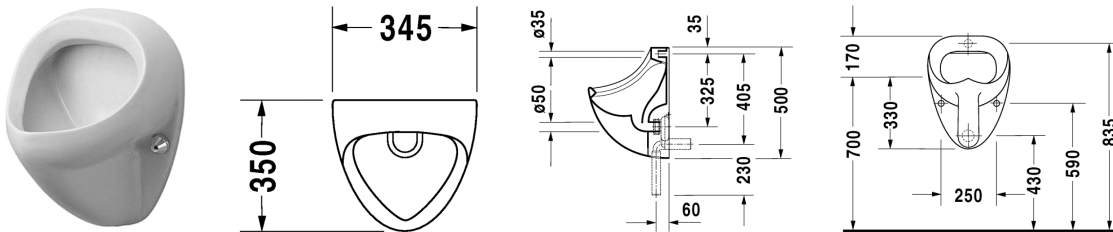


**Urinal Bill # 085135..00 / 085135..07**

|< 345 mm >|

**Urinals**



Urinal Bill	Dimension	Weight	Order number
concealed inlet, syphonic action, vertical or horizontal outlet			
<b>Colors</b>			
00 White Alpin			
<b>Variant</b>			
	345 x 350 mm	12,000 kg	085135..00
	345 x 350 mm	12,000 kg	085135..07
<b>Accessories</b>			
Siphon	ø 50 mm	0,200 kg	005111
Siphon	ø 50 mm	0,200 kg	005112
Water inlet mechanism	1/2" mm	0,100 kg	695800
<b>Fixing</b>			
Fixing	ø 10 x 140 mm	0,200 kg	005030

All drawings contain the necessary measurements which are subject to standard tolerances. They are stated in mm and are non-binding. Exact measurements, in particular for customised installation scenarios, can only be taken from the finished ceramic piece.

<b>REMINDER:</b>	<b>Pipe flushing must be done before faucets are installed. Failure to do so voids the warranty.</b>
	Do not use cleaners containing abrasive cleansers, ammonia, bleach, acids, waxes, alcohol, solvents or other products not recommended for chrome.
	All information is for reference only, installation shall always be based on the actual product delivered.