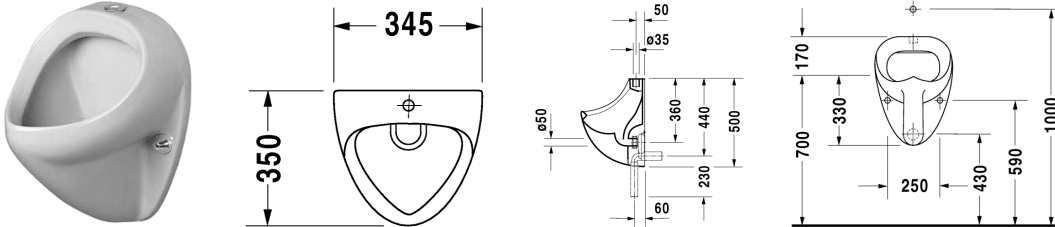


Urinal Jim # 085035..00 / 085035..07

|< 345 mm >|

Urinals



Urinal Jim	Dimension	Weight	Order number
visible inlet, syphonic action, vertical or horizontal outlet			
Colors			
00 White Alpin			
Variant			
	345 x 350 mm	12,000 kg	085035..00
	345 x 350 mm	12,000 kg	085035..07
Accessories			
Siphon	ø 50 mm	0,200 kg	005111
Siphon	ø 50 mm	0,200 kg	005112
Fixing			
Fixing	ø 10 x 140 mm	0,200 kg	005030

All drawings contain the necessary measurements which are subject to standard tolerances. They are stated in mm and are non-binding. Exact measurements, in particular for customised installation scenarios, can only be taken from the finished ceramic piece.

REMINDER:	Pipe flushing must be done before faucets are installed. Failure to do so voids the warranty.
	Do not use cleaners containing abrasive cleansers, ammonia, bleach, acids, waxes, alcohol, solvents or other products not recommended for chrome.
	All information is for reference only, installation shall always be based on the actual product delivered.