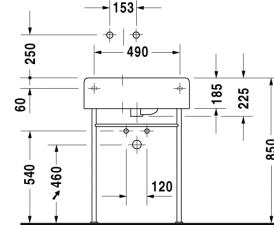
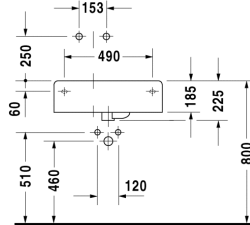
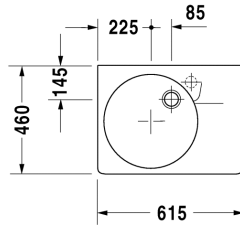


**Washbasin # 068460..00 / 068460..11**

|< 615 mm >|

Scola



Washbasin	Dimension	Weight	Order number
with overflow, with tap platform, bowl on left side			
<b>Colors</b>			
00 White Alpin			
<b>Variant</b>			
●	615 x 460 mm	24,000 kg	068460..00
●	615 x 460 mm	24,000 kg	068460..11
<b>Accessories</b>			
Metal console	-	2,700 kg	003059
Pop-up basin waste	-	0,500 kg	005031
Design Siphon	-	1,500 kg	005036
Design angle valve	1/2" mm	0,500 kg	003045

All drawings contain the necessary measurements which are subject to standard tolerances. They are stated in mm and are non-binding. Exact measurements, in particular for customised installation scenarios, can only be taken from the finished ceramic piece.

<b>REMINDER:</b>	<b>Pipe flushing must be done before faucets are installed. Failure to do so voids the warranty.</b>
	Do not use cleaners containing abrasive cleansers, ammonia, bleach, acids, waxes, alcohol, solvents or other products not recommended for chrome.
	All information is for reference only, installation shall always be based on the actual product delivered.