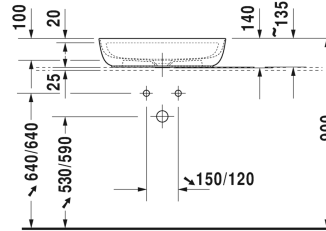
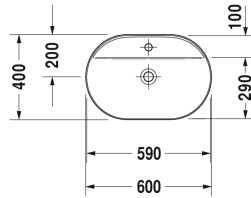


Luv Washbowl # 038060..00

| < 600 mm > |



Washbowl	Dimension	Weight	Order number
ground, without overflow, with tap platform, ceramic covered slotted waste included, fixings included, 600 mm			
Colors			
00 White Alpin 21 Sand Satin matt 23 Grey Satin matt 26 White Satin matt			
Variant			
● inner basin White, outer basin White	600 x 400 mm	10.300 kilogram	038060..00
Infobox			
Made from DuraCeram, * When using this siphon please observe outlet height from upper surface of finished floor to centre of outlet in accordance with the technical specification sheet			
Sanitary ceramics with the special WonderGliss surface finish will remain clean and attractive-looking for a long time to come. When ordering WonderGliss please add a "1" as eleventh digit to the model number.			
Accessory			
Design Siphon		1.500 kilogram	005036
Suitable products			
Vanity unit wall-mounted 1 pull-out compartment, countertop including one cut-out, for 1 above counter basin central, 800 x 550 mm	800 x 550 mm		KT6694
Vanity unit wall-mounted 1 pull-out compartment, countertop including one cut-out, for 1 above counter basin central, 1000 x 550 mm	1000 x 550 mm		KT6695
Vanity unit wall-mounted 1 pull-out compartment, countertop including one cut-out, for 1 above counter basin central, 1200 x 550 mm	1200 x 550 mm		KT6696
Vanity unit wall-mounted 2 pull-out compartments, 1 countertop with one cut-out or two cut-outs, for 1 or 2 above counter basins, 1400 x 550 mm	1400 x 550 mm		KT6697 B/L/R

Luv Washbowl # 038060..00

| < 600 mm > |

Vanity unit wall-mounted 2 drawers, upper drawer including cut-out for siphon and siphon cover, countertop including one cut-out, for 1 above counter basin central, 800 x 550 mm	800 x 550 mm	KT6654
Vanity unit wall-mounted 2 drawers, upper drawer including cut-out for siphon and siphon cover, countertop including one cut-out, for 1 above counter basin central, 1000 x 550 mm	1000 x 550 mm	KT6655
Vanity unit wall-mounted 2 drawers, upper drawer including cut-out for siphon and siphon cover, countertop including one cut-out, for 1 above counter basin central, 1200 x 550 mm	1200 x 550 mm	KT6656
Vanity unit wall-mounted 4 drawers, 1 countertop with one cut-out or two cut-outs, drawer beneath basin including cut-out for siphon and siphon cover, for 1 or 2 above counter basins, 1400 x 550 mm	1400 x 550 mm	KT6657 B/L/R
Console including drawer for vanity basin countertop including one cut-out, 1 drawer beneath console, 1 cover beneath console, 3 console supports, 1800 x 565 mm	1800 x 565 mm	DL6892 L/R
Console including drawer for wash bowls or semi-recessed washbasin 1 countertop including one central cut-out, 1 drawer beneath console, 2 console supports, 600 x 565 mm	600 x 565 mm	DL6787
Console including drawer for wash bowls or semi-recessed washbasin 1 countertop including one central cut-out, 1 drawer beneath console, 2 console supports, 800 x 565 mm	800 x 565 mm	DL6788
Console including drawer for wash bowls or semi-recessed washbasin 1 countertop including one central cut-out, 1 drawer beneath console, 2 console supports, 1000 x 565 mm	1000 x 565 mm	DL6789
Console including drawer for wash bowls or semi-recessed washbasin 1 countertop including one central cut-out, 1 drawer beneath console, 3 console supports, 1200 x 565 mm	1200 x 565 mm	DL6790
Console including drawer for wash bowls or semi-recessed washbasin countertop including one cut-out, 2 drawers beneath console, 3 console supports, 1500 x 565 mm	1500 x 565 mm	DL6791 L/R
Console including drawer for wash bowls or semi-recessed washbasin countertop including one cut-out, 2 drawers beneath console, 3 console supports, 1800 x 565 mm	1800 x 565 mm	DL6792 L/R
Vanity unit for console 2 drawers, upper drawer including cut-out for siphon and siphon cover, 800 x 565 mm	800 x 565 mm	DL6799
Vanity unit for console 1 pull-out compartment, compartment consists of glass dividers and 2 boxes (small/large), 600 x 478 mm	600 x 478 mm	XL6500
Vanity unit for console 1 pull-out compartment, compartment consists of glass dividers and 2 boxes (small/large), 800 x 478 mm	800 x 478 mm	XL6501
Vanity unit for console 1 pull-out compartment, compartment consists of glass dividers and 2 boxes (small/large), 1000 x 478 mm	1000 x 478 mm	XL6502
Vanity unit for console 2 drawers, upper drawer including cut-out for siphon and siphon cover, 600 x 478 mm	600 x 478 mm	XL6510
Vanity unit for console 2 drawers, upper drawer including cut-out for siphon and siphon cover, 800 x 478 mm	800 x 478 mm	XL6511
Vanity unit for console 2 drawers, upper drawer including cut-out for siphon and siphon cover, 1000 x 478 mm	1000 x 478 mm	XL6512

Luv Washbowl # 038060..00

| < 600 mm > |

Vanity unit for console 1 pull-out compartment, compartment consists of glass dividers and 2 boxes (small/large), 600 x 548 mm	600 x 548 mm	XL6719
Vanity unit for console 1 pull-out compartment, compartment consists of glass dividers and 2 boxes (small/large), 800 x 548 mm	800 x 548 mm	XL6713
Vanity unit for console 1 pull-out compartment, compartment consists of glass dividers and 2 boxes (small/large), 1000 x 548 mm	1000 x 548 mm	XL6715
Vanity unit for console 2 drawers, upper drawer including cut-out for siphon and siphon cover, 600 x 548 mm	600 x 548 mm	XL6717
Vanity unit for console 2 drawers, upper drawer including cut-out for siphon and siphon cover, 800 x 548 mm	800 x 548 mm	XL6714
Vanity unit for console 2 drawers, upper drawer including cut-out for siphon and siphon cover, 1000 x 548 mm	1000 x 548 mm	XL6716
Vanity unit for console 1 opened compartment including glass shelf, 800 x 548 mm	800 x 548 mm	XL6718
Vanity unit for console 2 drawers, upper drawer including cut-out for siphon and siphon cover, 600 x 478 mm	600 x 478 mm	H26310
Vanity unit for console 2 drawers, upper drawer including cut-out for siphon and siphon cover, 800 x 478 mm	800 x 478 mm	H26311
Vanity unit for console 2 drawers, upper drawer including cut-out for siphon and siphon cover, 1000 x 478 mm	1000 x 478 mm	H26312
Vanity unit for console 2 drawers, upper drawer including cut-out for siphon and siphon cover, 800 x 548 mm	800 x 548 mm	H26301
Vanity unit for console 2 drawers, upper drawer including cut-out for siphon and siphon cover, 600 x 548 mm	600 x 548 mm	H26300
Vanity unit for console 2 drawers, upper drawer including cut-out for siphon and siphon cover, 1000 x 548 mm	1000 x 548 mm	H26302
Vanity unit for console 1 opened compartment including towel rail, 600 x 518 mm	600 x 518 mm	VE6540
Vanity unit for console 1 opened compartment including towel rail, 800 x 518 mm	800 x 518 mm	VE6541
Vanity unit for console 1 opened compartment including towel rail, 1000 x 518 mm	1000 x 518 mm	VE6542
Vanity unit for console 2 drawers, upper drawer including cut-out for siphon and siphon cover, 1000 x 565 mm	1000 x 565 mm	DL6798
Vanity unit for console 1 pull-out compartment, 520 x 477 mm	520 x 477 mm	LC6810
Vanity unit for console 1 pull-out compartment, 620 x 477 mm	620 x 477 mm	LC6811
Vanity unit for console 1 pull-out compartment, 820 x 477 mm	820 x 477 mm	LC6812
Vanity unit for console 1 pull-out compartment, 1020 x 477 mm	1020 x 477 mm	LC6813
Vanity unit for console with 2 drawers, upper drawer including cut-out for siphon and siphon cover, 520 x 477 mm	520 x 477 mm	LC6820
Vanity unit for console with 2 drawers, upper drawer including cut-out for siphon and siphon cover, 620 x 477 mm	620 x 477 mm	LC6821

Vanity unit for console with 2 drawers, upper drawer including cut-out for siphon and siphon cover, 820 x 477 mm	820 x 477 mm	LC6822
Vanity unit for console with 2 drawers, upper drawer including cut-out for siphon and siphon cover, 1020 x 477 mm	1020 x 477 mm	LC6823
Vanity unit for console 1 pull-out compartment, 520 x 547 mm	520 x 547 mm	LC6826
Vanity unit for console 1 pull-out compartment, 620 x 547 mm	620 x 547 mm	LC6827
Vanity unit for console 1 pull-out compartment, 820 x 547 mm	820 x 547 mm	LC6828
Vanity unit for console 1 pull-out compartment, 1020 x 547 mm	1020 x 547 mm	LC6829
Vanity unit for console with 2 drawers, upper drawer including cut-out for siphon and siphon cover, 520 x 547 mm	520 x 547 mm	LC6836
Vanity unit for console with 2 drawers, upper drawer including cut-out for siphon and siphon cover, 620 x 547 mm	620 x 547 mm	LC6837
Vanity unit for console with 2 drawers, upper drawer including cut-out for siphon and siphon cover, 820 x 547 mm	820 x 547 mm	LC6838
Vanity unit for console with 2 drawers, upper drawer including cut-out for siphon and siphon cover, 1020 x 547 mm	1020 x 547 mm	LC6839
Vanity unit floor-standing 1 pull-out compartment, 1338 x 570 mm	1338 x 570 mm	LU9561
Vanity unit floor-standing 2 pull-out compartments, 1733 x 570 mm	1733 x 570 mm	LU9562 B
Vanity unit floor-standing 2 pull-out compartments, 1733 x 570 mm	1733 x 570 mm	LU9563 L/R
Vanity unit floor-standing 1 pull-out compartment, 638 x 450 mm	638 x 450 mm	LU9560
Vanity unit floor-standing 1 drawer, 1 pull-out compartment, upper drawer including cut-out for siphon and siphon cover, 638 x 450 mm	638 x 450 mm	LU9565
Vanity unit floor-standing 1 drawer, 1 pull-out compartment, upper drawer including cut-out for siphon and siphon cover, 1338 x 570 mm	1338 x 570 mm	LU9566
Vanity unit floor-standing 2 drawers, 2 pull-out compartments, 1733 x 570 mm	1733 x 570 mm	LU9568 L/R

All drawings contain the necessary measurements which are subject to standard tolerances. They are stated in mm and are non-binding. Exact measurements, in particular for customised installation scenarios, can only be taken from the finished ceramic piece.

REMINDER:	Pipe flushing must be done before faucets are installed. Failure to do so voids the warranty.
	Do not use cleaners containing abrasive cleansers, ammonia, bleach, acids, waxes, alcohol, solvents or other products not recommended for chrome.
	All information is for reference only, installation shall always be based on the actual product delivered.